

osmi
AUSTRALIA

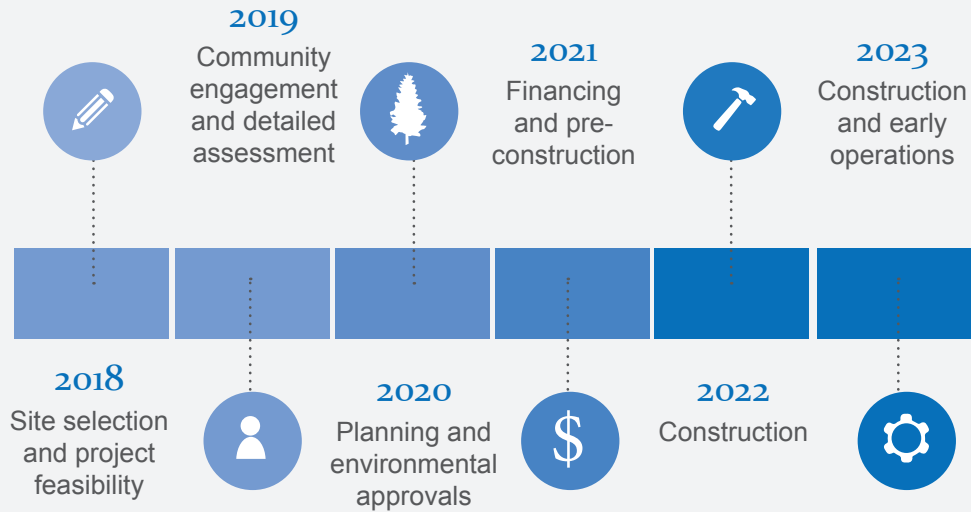


Delburn Wind Farm

An iconic wind farm bringing jobs and clean energy to the Latrobe Valley.

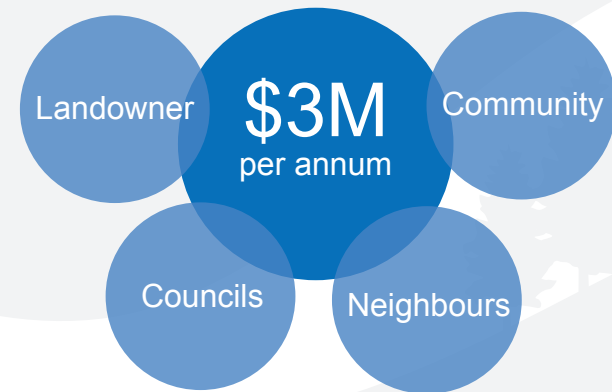
- Powering 200,000 homes
- The opportunity for community co-investment
- Existing side by side within forest plantations

Project timeline



Local community benefits:

Over \$3m will go into the local area per annum: Landowner, Councils, Neighbours and Community.



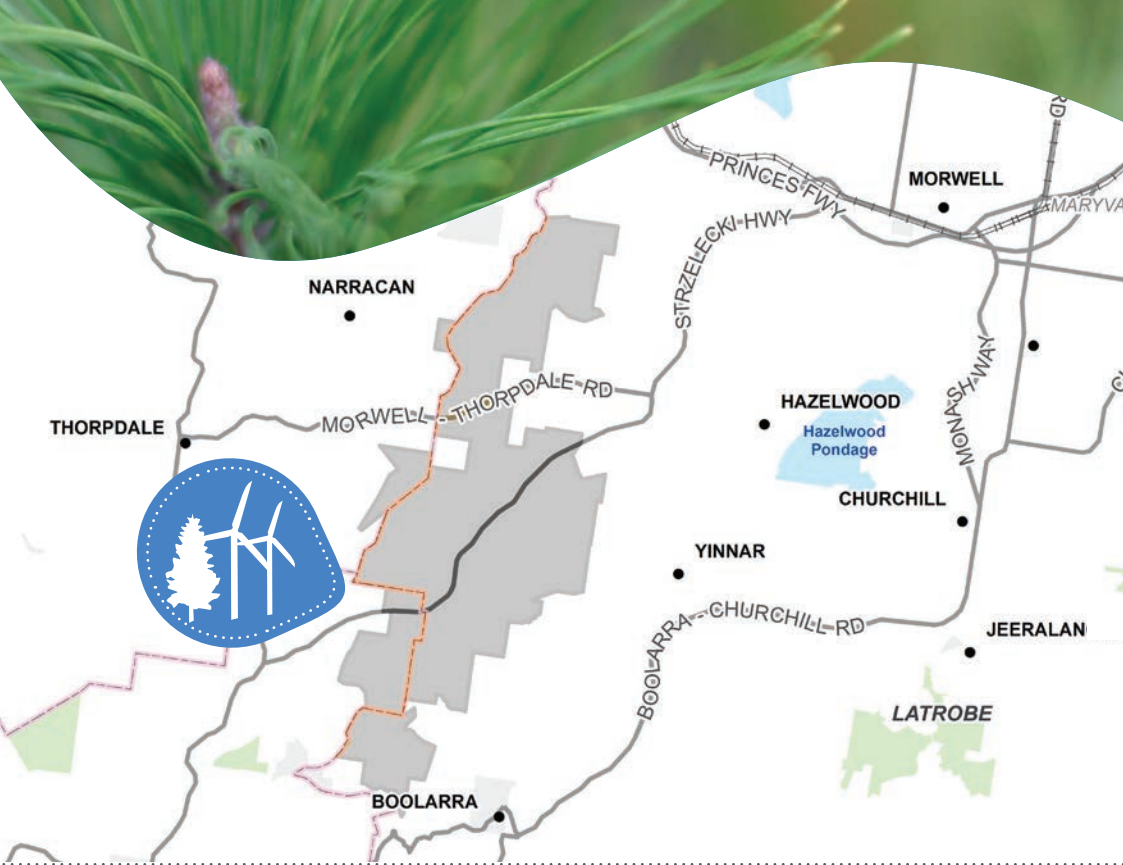
HVP Plantations' site:

- Consideration of plantation activities, setbacks from roads and properties, sensitive flora and fauna, cultural heritage, watercourses
- Maximises existing forestry tracks

- Early engagement with the community for best practice approach
- Opportunity for community co-investment
- Co-developed benefit-sharing model with neighbourhood program and community development fund
- Local long-term employees
- 3 councils benefiting directly from rates

Project statistics





Who we are

OSMI is a company bringing over 25 years of wind farm development experience in Victoria. OSMI is actively investigating the feasibility of forestry based wind farms throughout Victoria.

Get involved

Subscribe to our enews, participate in our survey and help shape the project, go to www.osmi.com.au

Get in touch

contactus@osmi.com.au

