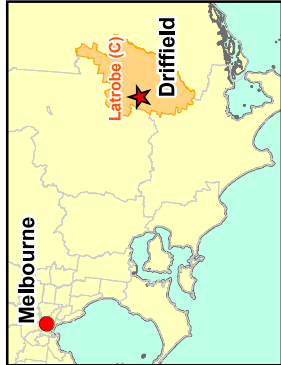
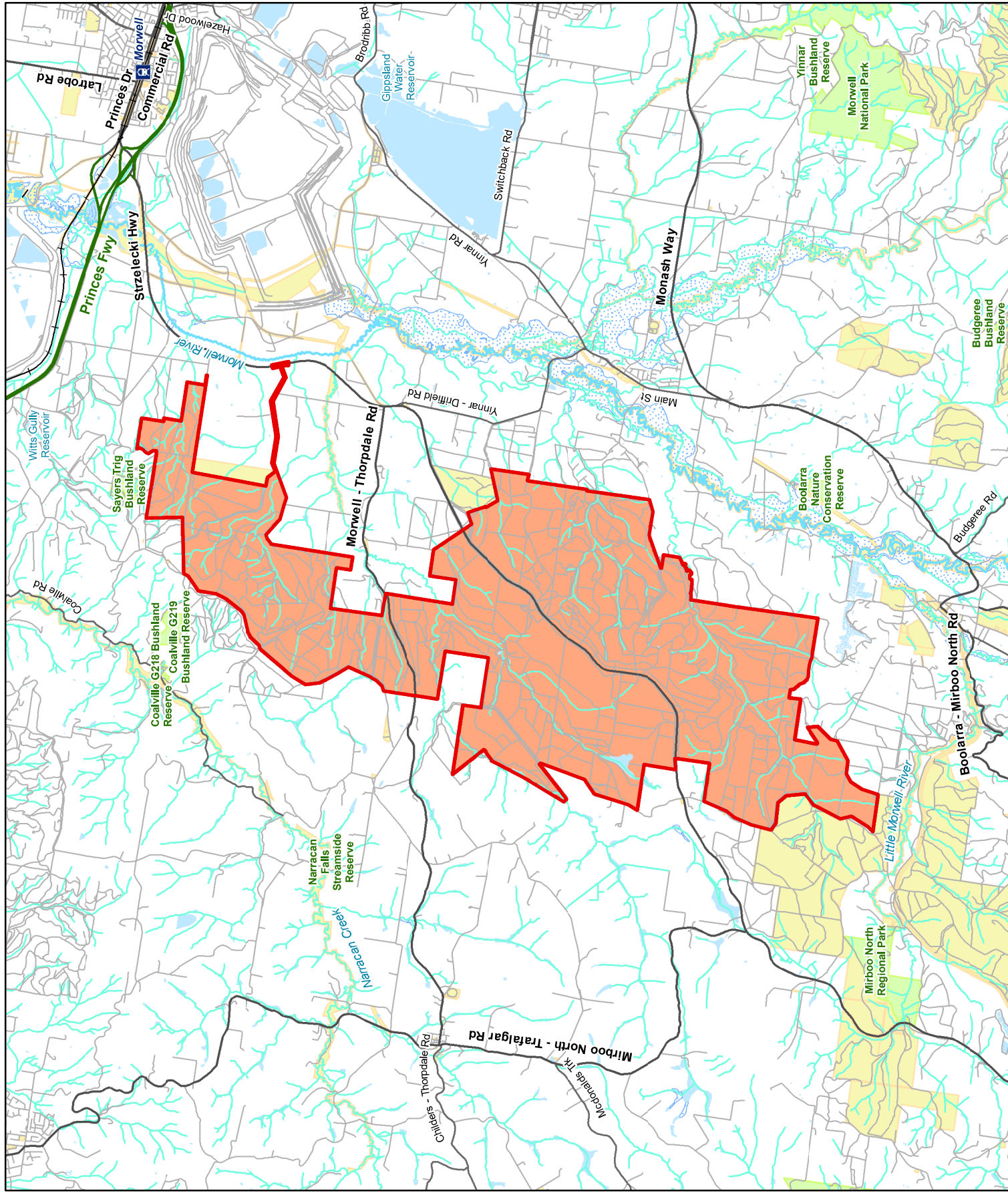


## FIGURES

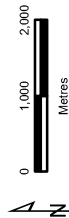
---

# Legend

- Study Area
- Railway
- Freeway
- Major Road
- Collector Road
- Minor Road
- Minor Watercourse
- Major Watercourse
- Permanent Waterbody
- Land Subject to Inundation
- Parks and Reserves
- Crown Land

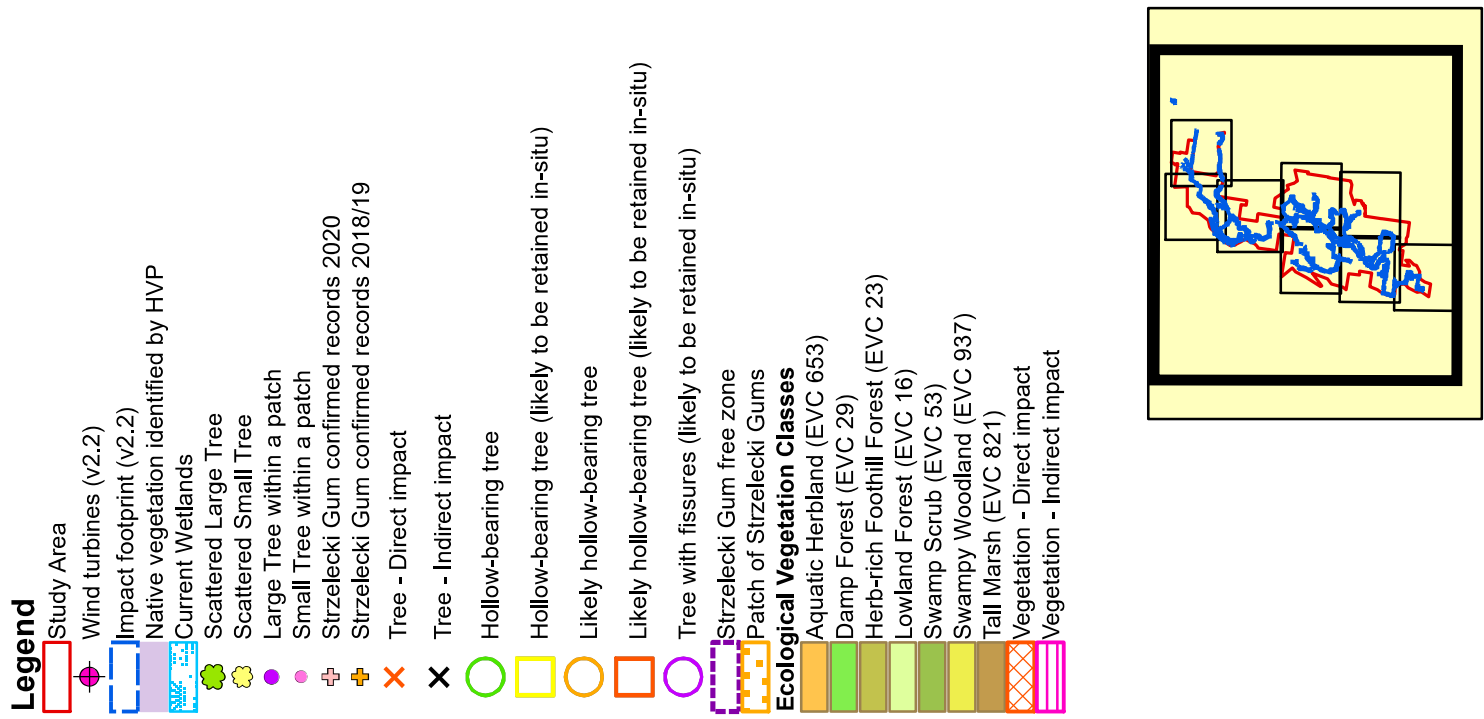
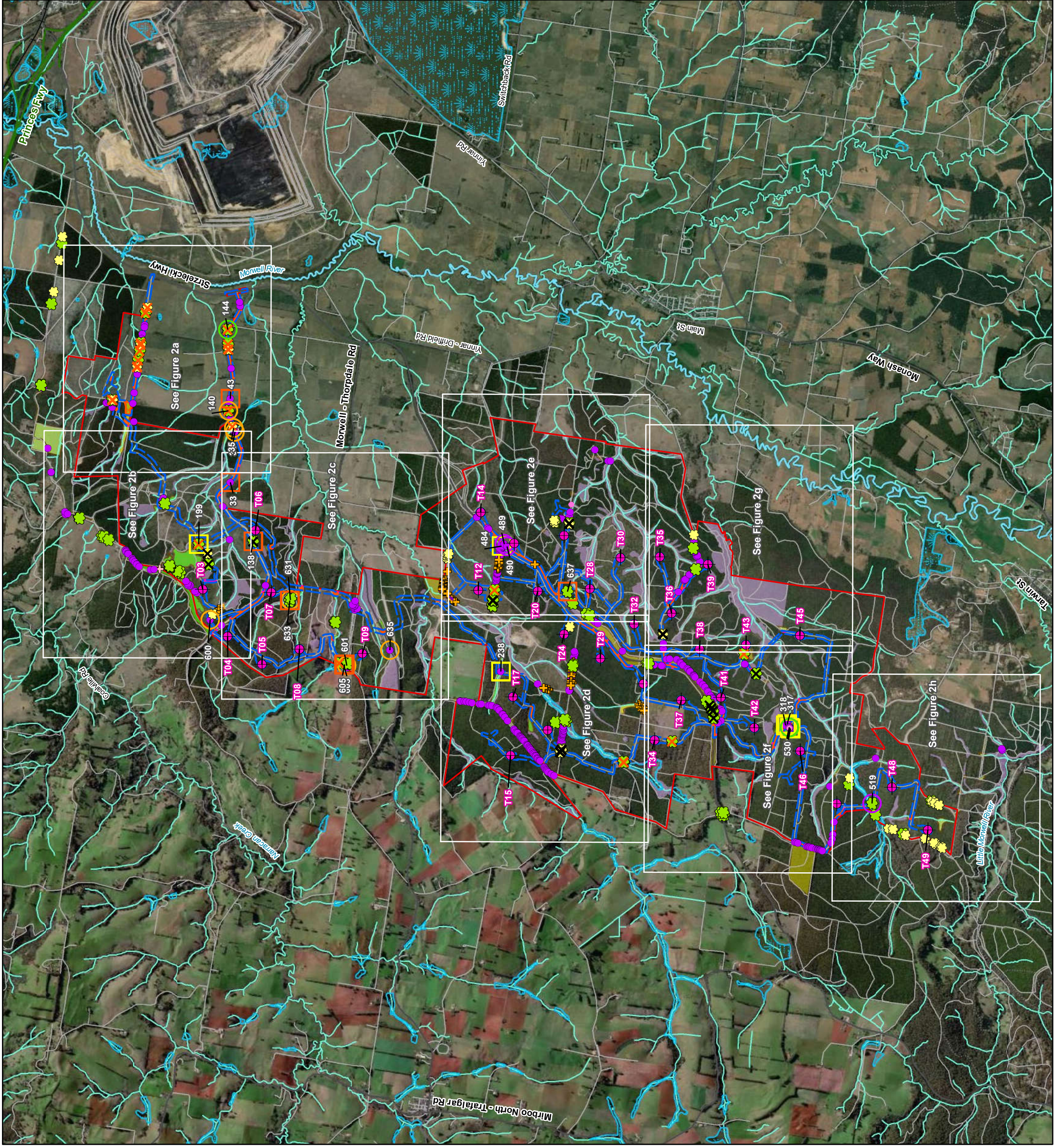


**Figure 1**  
Location of the study area  
Biodiversity Assessment for  
the Delburn Wind Farm



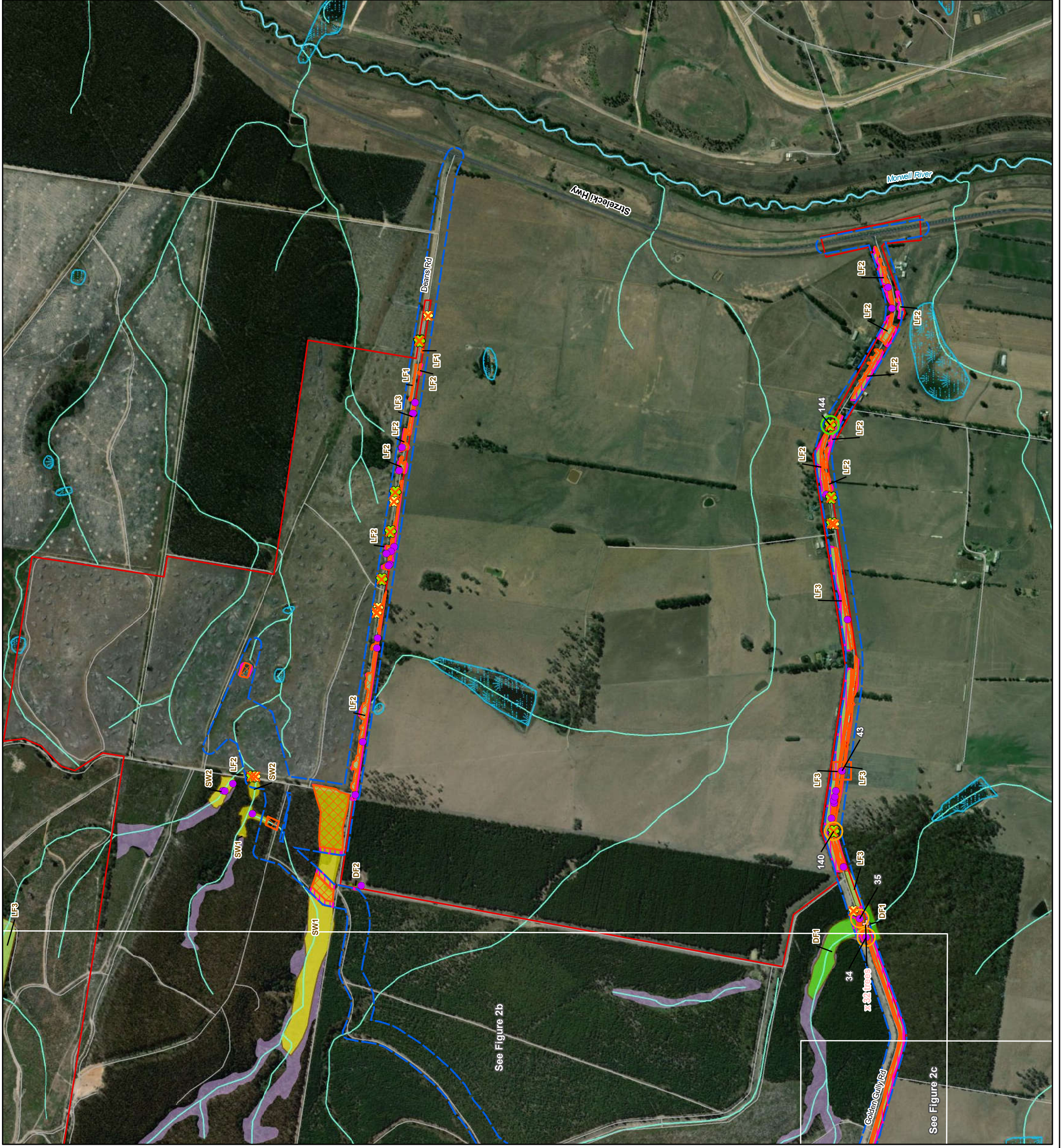
VicMap Data: The State of Victoria does not warrant the accuracy or completeness of information in this publication and any person using or relying upon such information does so on the basis that the State of Victoria shall bear no responsibility or liability whatsoever for any errors, faults, defects or omissions in the information.





**Figure 2 Overview**  
**Ecological features**  
**Biodiversity Assessment for the Delburn**  
**Wind Farm**





**Legend**

Study Area

Impact footprint (v2.2)

Native vegetation identified by HVP

Current Wetlands

Scattered Large Tree

Scattered Small Tree

Large Tree within a patch

Strzelecki Gum confirmed records 2020

Tree - Direct impact

Hollow-bearing tree

Likely hollow-bearing tree

Likely hollow-bearing tree (likely to be retained in-situ)

**Ecological Vegetation Classes**

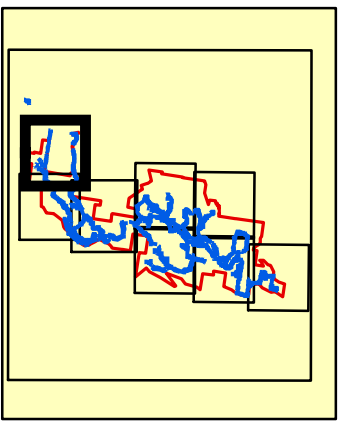
Damp Forest (EVC 29)

Lowland Forest (EVC 16)

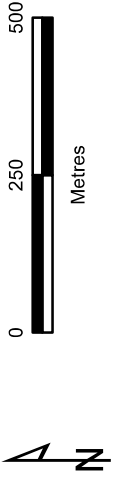
Swampy Woodland (EVC 937)

Vegetation - Direct impact

Vegetation - Indirect impact

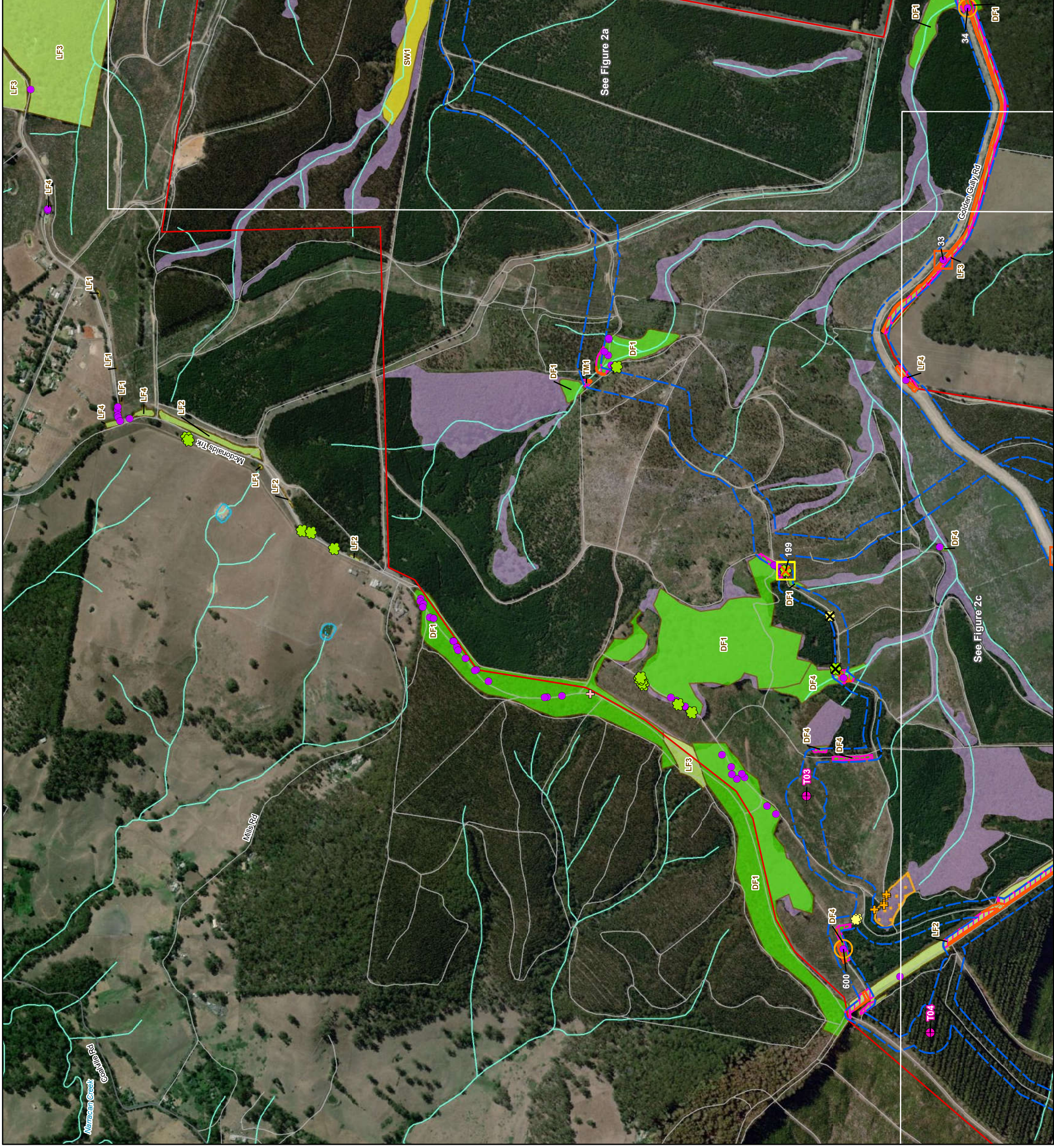


**Figure 2a**  
**Ecological features**  
**Biodiversity Assessment for the Delburn**  
**Wind Farm**

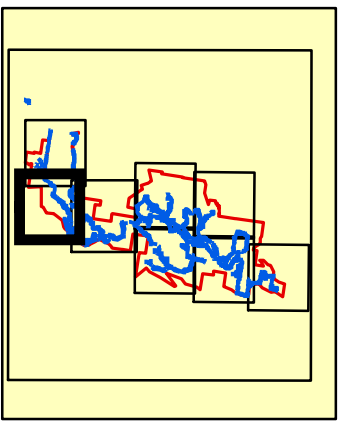


VicMap Data. The State of Victoria does not warrant the accuracy or completeness of information in this publication and any person using or relying upon such information does so on the basis that the State of Victoria shall bear no responsibility or liability whatsoever for any errors, faults, defects or omissions in the information.

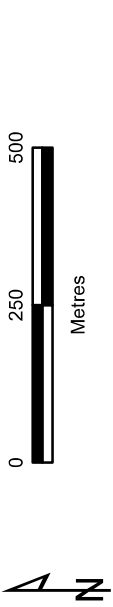




- Legend**
- Study Area
  - Wind turbines (v2.2)
  - Impact footprint (v2.2)
  - Native vegetation identified by HVP
  - Current Wetlands
  - Scattered Large Tree
  - Scattered Small Tree
  - Large Tree within a patch
  - Strzelecki Gum confirmed records 2020
  - Strzelecki Gum confirmed records 2018/19
  - Tree - Direct impact
  - Tree - Indirect impact
  - Hollow-bearing tree (likely to be retained in-situ)
  - Likely hollow-bearing tree
  - Likely hollow-bearing tree (likely to be retained in-situ)
  - Patch of Strzelecki Gums
  - Ecological Vegetation Classes**
  - Damp Forest (EVC 29)
  - Lowland Forest (EVC 16)
  - Swampy Woodland (EVC 937)
  - Tall Marsh (EVC 821)
  - Vegetation - Direct impact
  - Vegetation - Indirect impact

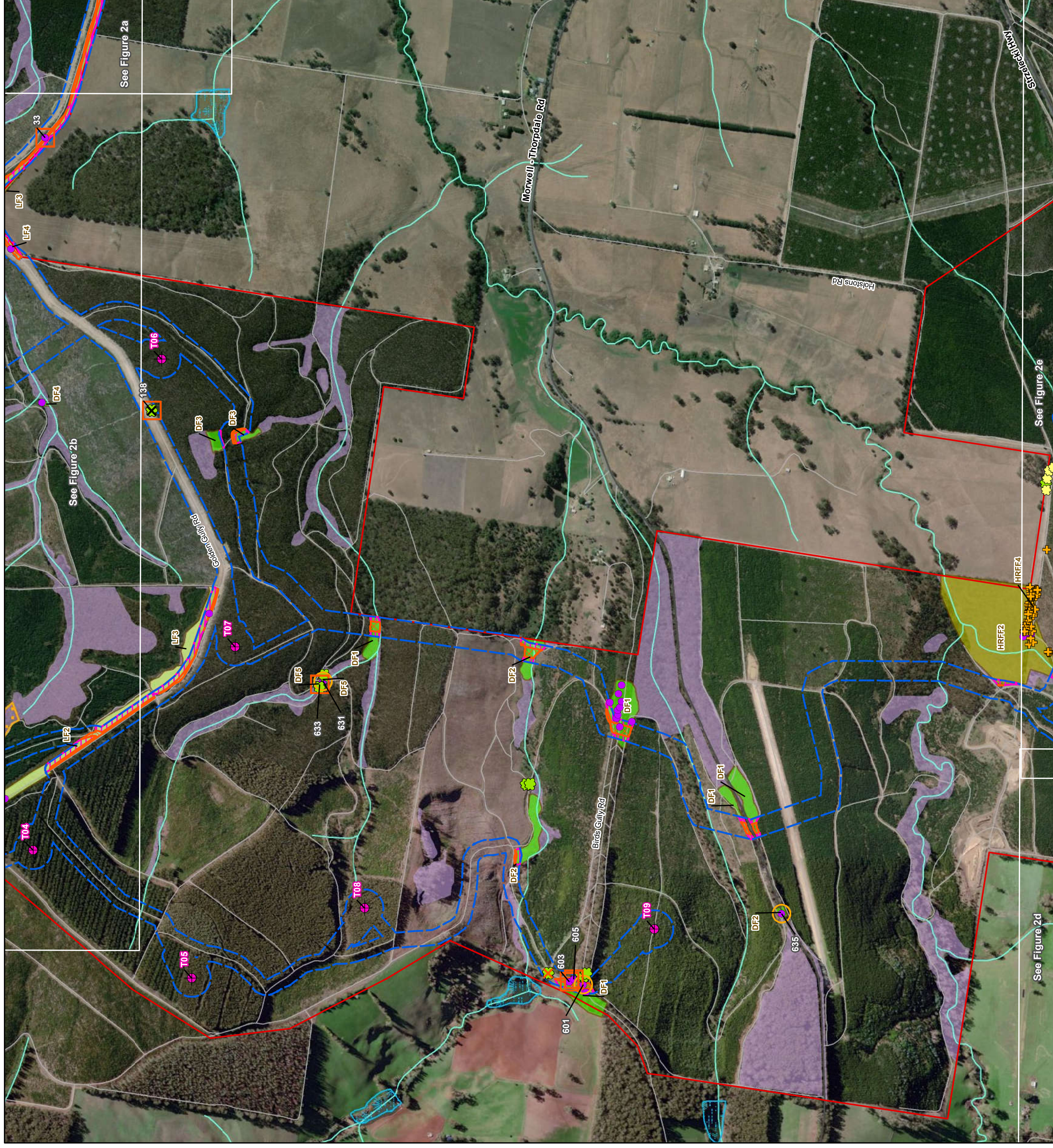


**Figure 2b**  
**Ecological features**  
**Biodiversity Assessment for the Delburn**  
**Wind Farm**

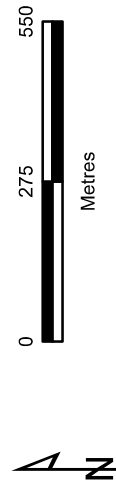


VicMap Data. The State of Victoria does not warrant the accuracy or completeness of information in this publication and any person using or relying upon such information does so on the basis that the State of Victoria shall bear no responsibility or liability whatsoever for any errors, faults, defects or omissions in the information.





**Figure 2c**  
**Ecological features**  
*Biodiversity Assessment for the Delburn Wind Farm*



**VicMap Data:** The State of Victoria does not warrant the accuracy or completeness of information in this publication and any person using or relying upon such information does so on the basis that the State of Victoria shall bear no responsibility or liability whatsoever for any errors, faults, defects or omissions in the information.