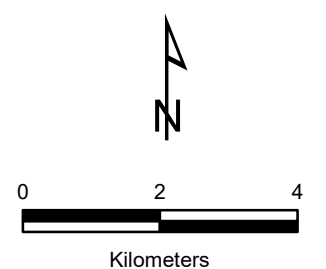


Service Layer Credits: Source: Esri, Maxar, GeoEye, Earthstar Geographics, CNES/Airbus DS, USDA, USGS, AeroGRID, IGN, and the GIS User Community

**Figure 4**  
**Modelled Vegetation**  
**Classes within 10km of**  
**the study area**  
*Biodiversity Assessment*  
*for the Strzelecki Wind*  
*Farm*

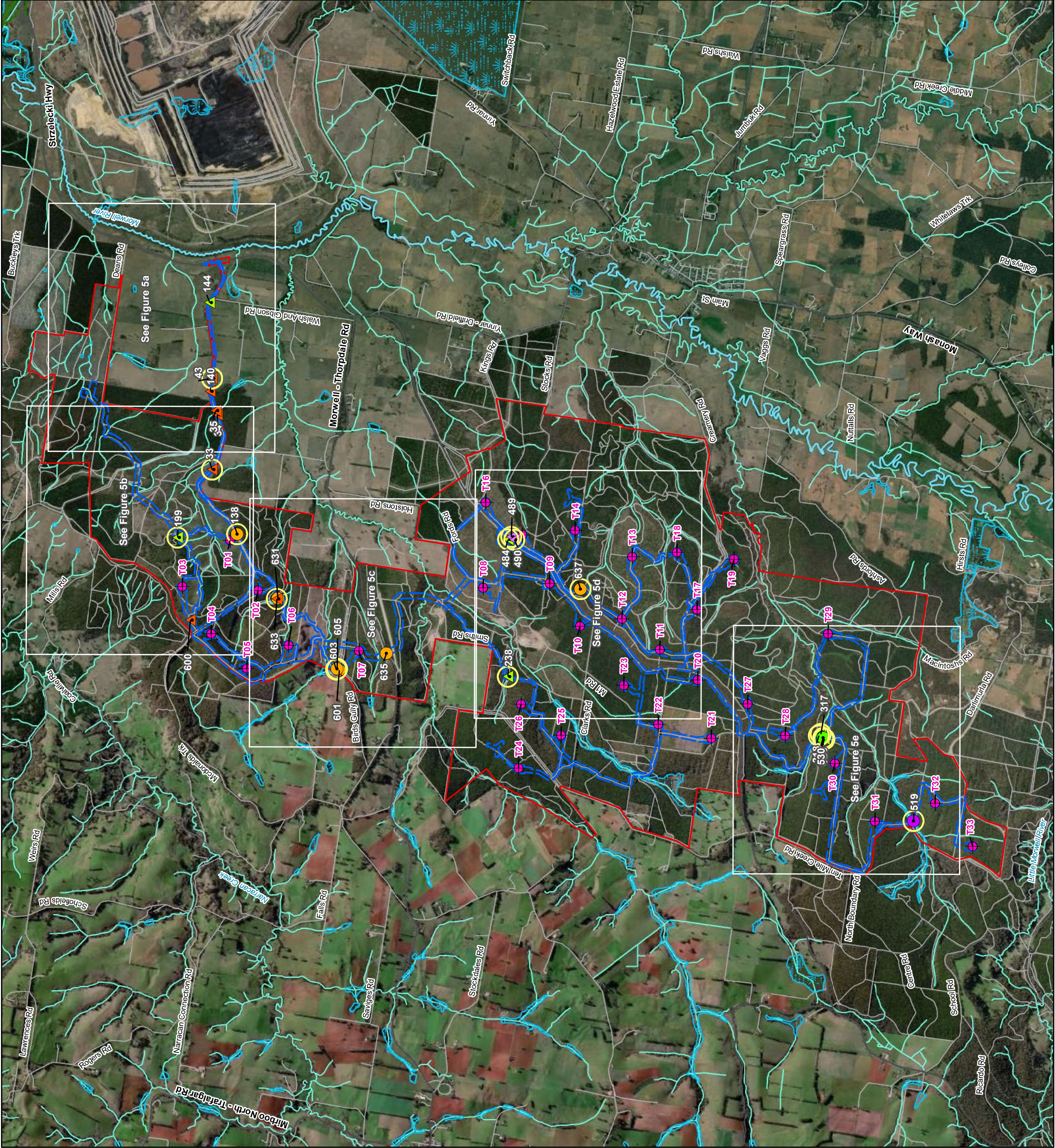
- Legend**
- Study Area
  - Search area (10km)
  - Bioregion boundaries
  - EVC - Bioregional Conservation Status**
  - Endangered
  - Vulnerable
  - Depleted
  - Least Concern



VicMap Data: The State of Victoria does not warrant the accuracy or completeness of information in this publication and any person using or relying upon such information does so on the basis that the State of Victoria shall bear no responsibility or liability whatsoever for any errors, faults, defects or omissions in the information.

10745\_Fig04\_ModEVCs\_10km\_PA3 19/10/2020 melsley





**Legend**

Study Area

Wind turbines (v3.5)

Impact footprint (v3.5)

Current Wetlands

Hollow-bearing tree - Direct impact

Hollow-bearing tree - Indirect impact

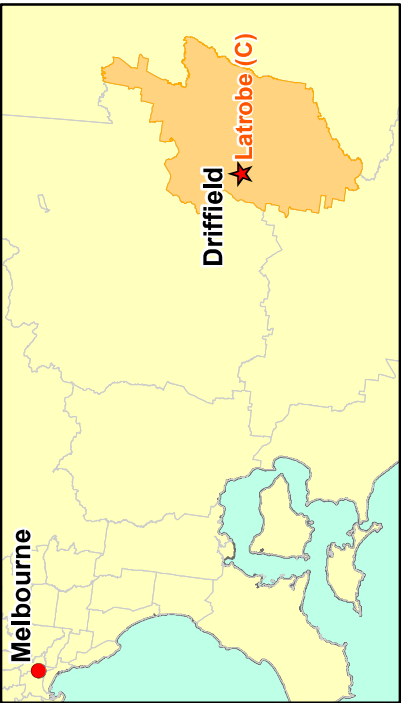
Likely hollow-bearing tree - Direct impact

Likely hollow-bearing tree - Indirect impact

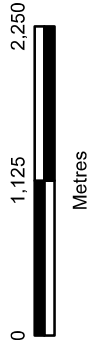
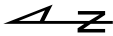
Tree with fissures - Direct impact

Tree with fissures - Indirect impact

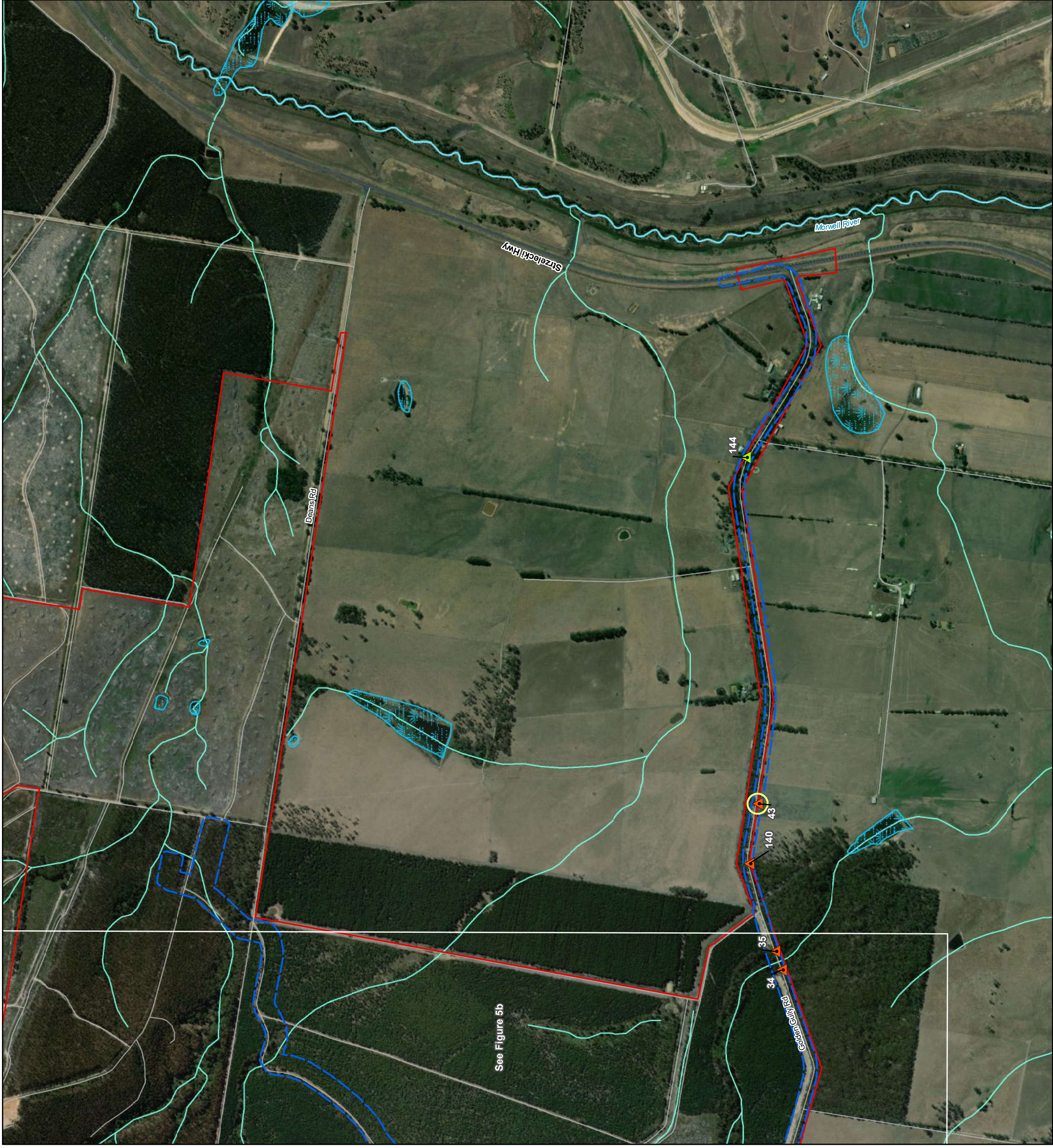
Tree likely to be retained in-situ



**Figure 5 Overview**  
**Hollow-bearing trees**  
**Biodiversity Assessment for the Delburn**  
**Wind Farm**

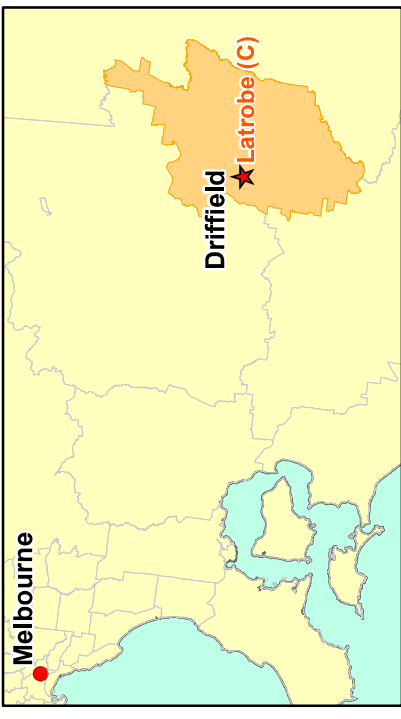




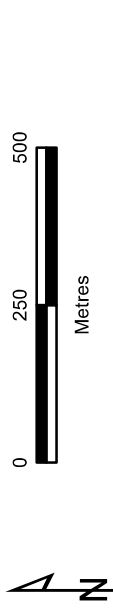


**Legend**

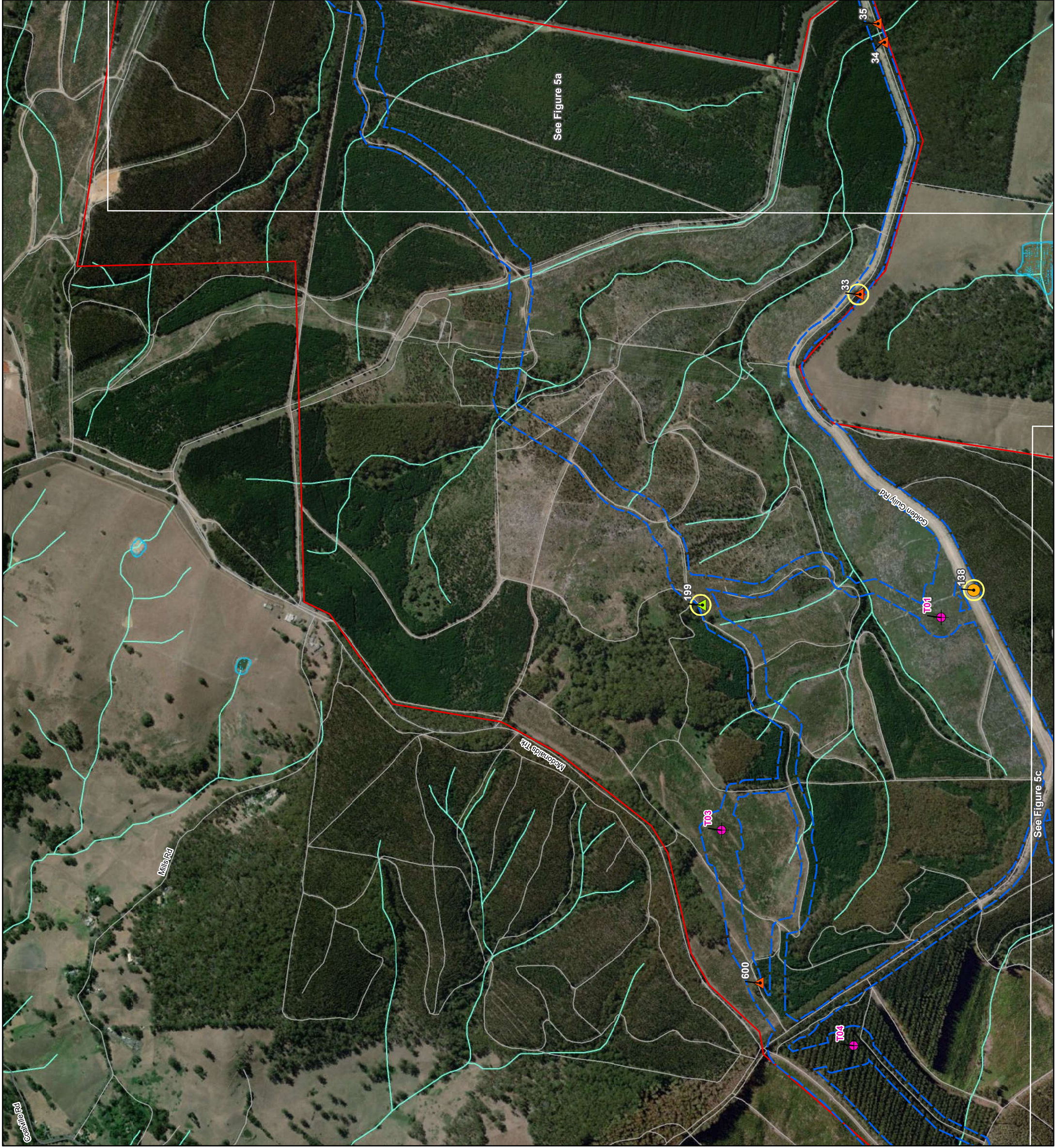
- Study Area
- Impact footprint (v3.5)
- Current Wetlands
- Hollow-bearing tree - Indirect impact
- Likely hollow-bearing tree - Indirect impact
- Tree likely to be retained in-situ



**Figure 5a**  
**Hollow-bearing trees**  
**Biodiversity Assessment for the Delburn**  
**Wind Farm**







**Legend**

Study Area

Wind turbines (v3.5)

Impact footprint (v3.5)

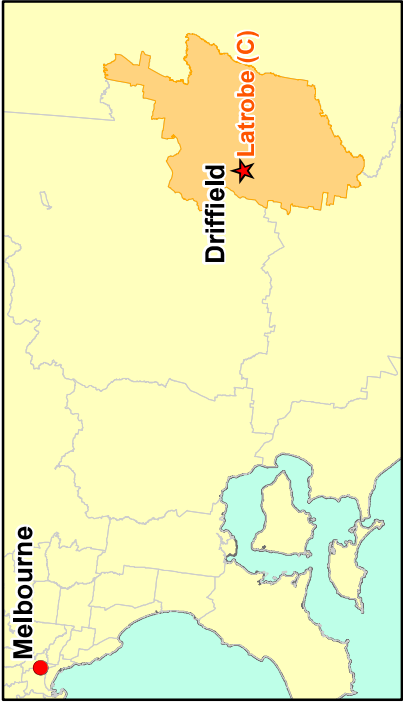
Current Wetlands

Hollow-bearing tree - Indirect impact

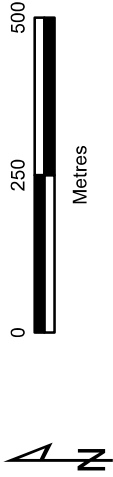
Likely hollow-bearing tree - Direct impact

Likely hollow-bearing tree - Indirect impact

Tree likely to be retained in-situ



**Figure 5b**  
**Hollow-bearing trees**  
**Biodiversity Assessment for the Delburn**  
**Wind Farm**



VicMap Data. The State of Victoria does not warrant the accuracy or completeness of information in this publication and any person using or relying upon such information does so on the basis that the State of Victoria shall bear no responsibility or liability whatsoever for any errors, faults, defects or omissions in the information.