



Legend

Study Area

Wind turbines (v3.5)

Impact footprint (v3.5)

Current Wetlands

Survey locations

Bat

Bird utilisation

Camera

Growing Grass Frog survey site (2019)

GGF recorded

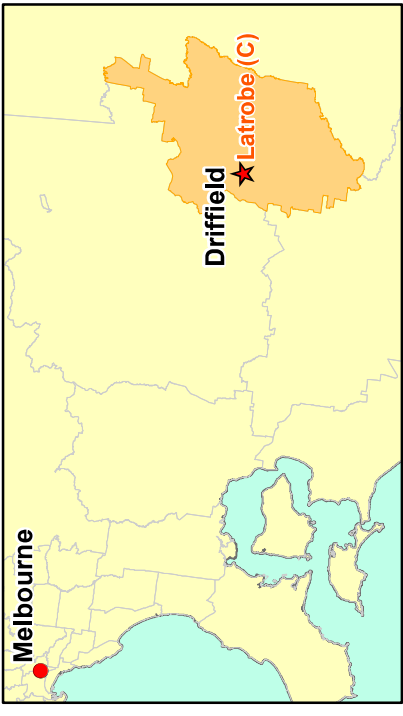
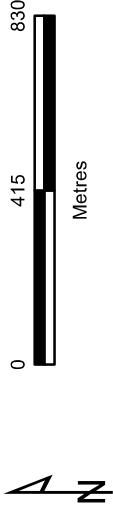
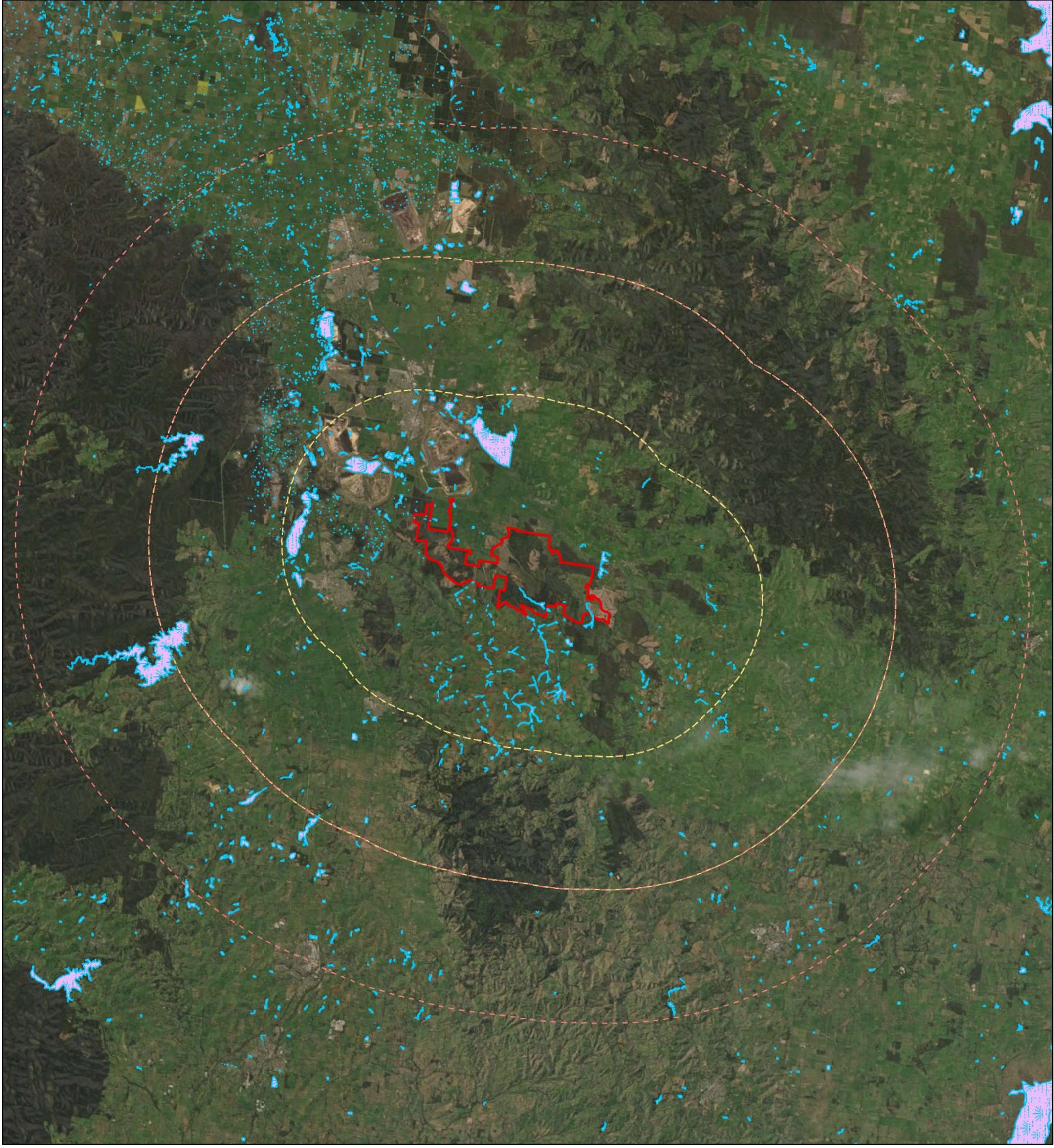


Figure 7c
Survey locations
Biodiversity Assessment for the Delburn
Wind Farm



VicMap Data: The State of Victoria does not warrant the accuracy or completeness of information in this publication and any person using or relying upon such information does so on the basis that the State of Victoria shall bear no responsibility or liability whatsoever for any errors, faults, defects or omissions in the information.



- Legend**
- Study Area
 - Current Wetlands (DELWP)
 - Search area (10km)
 - Search area (10 to 20km)
 - Search area (20 to 30km)

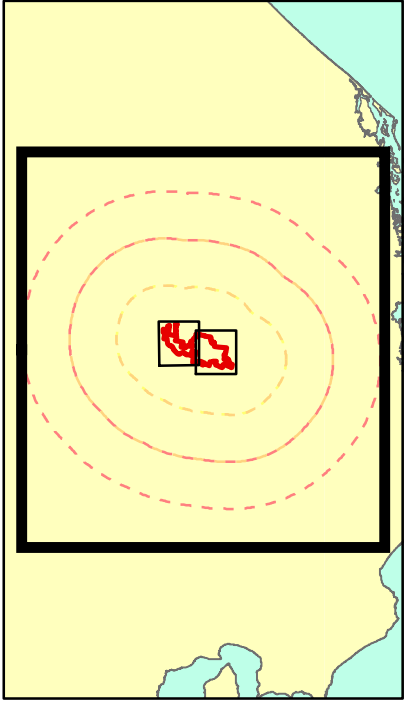
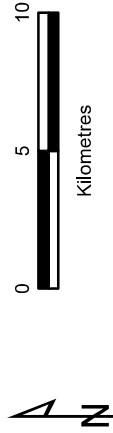
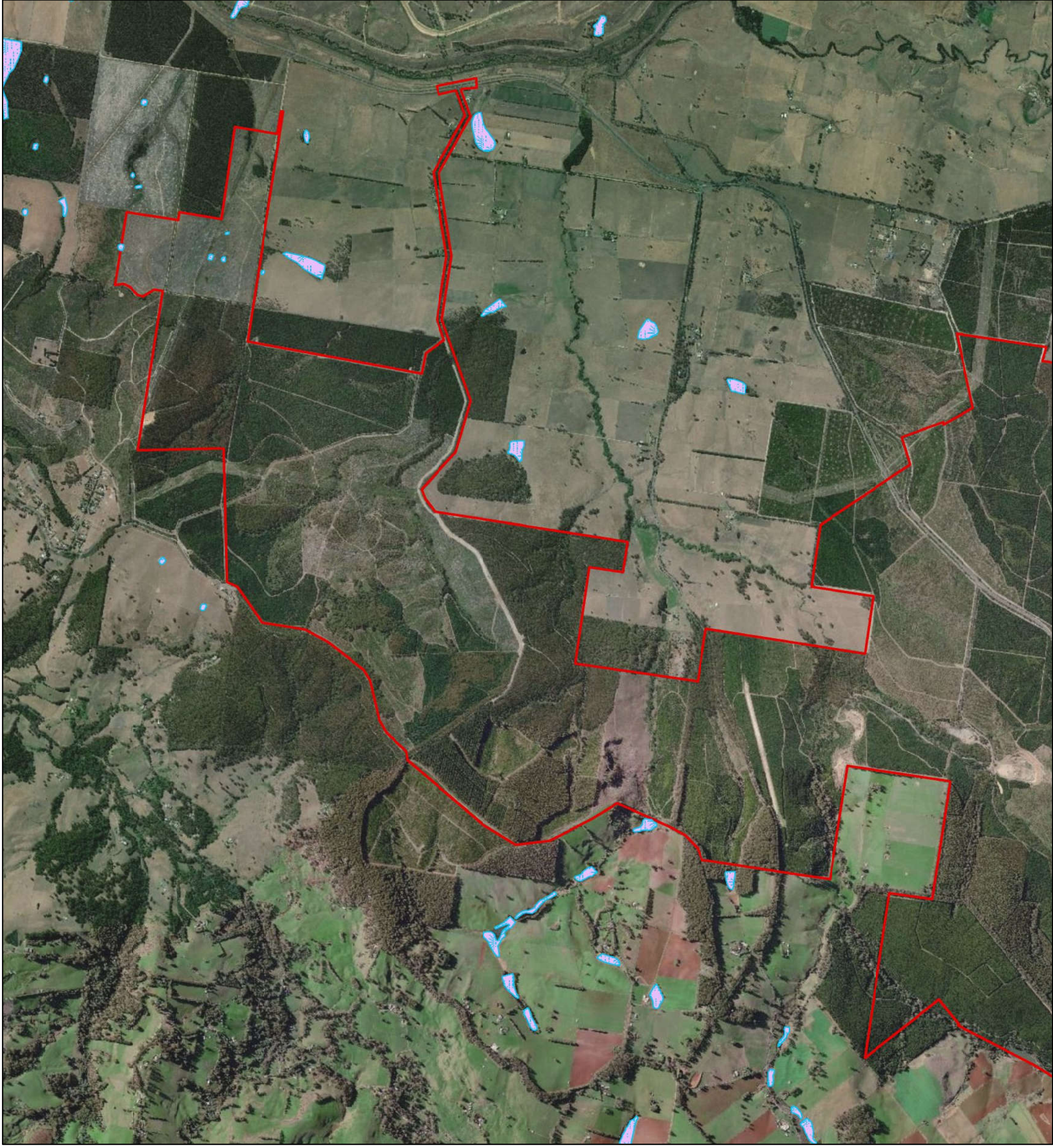


Figure 8 Overview
Current Wetlands within 30km of the study area
Biodiversity Assessment for the Delburn Wind Farm



VicMap Data. The State of Victoria does not warrant the accuracy or completeness of information in this publication and any person using or relying upon such information does so on the basis that the State of Victoria shall bear no responsibility or liability whatsoever for any errors, faults, defects or omissions in the information.



Legend

Study Area

Current Wetlands (DELWP)

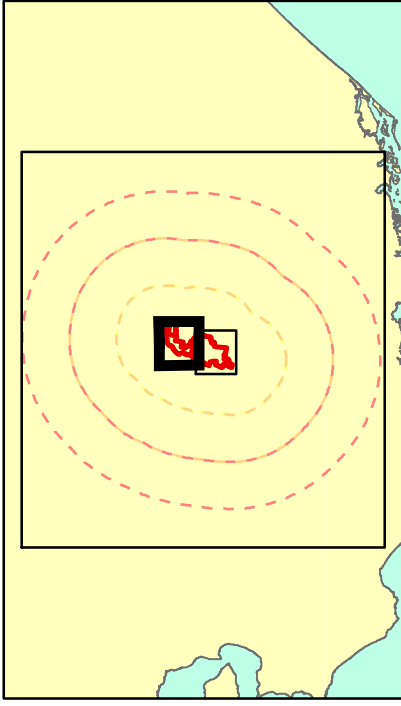
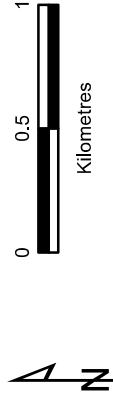
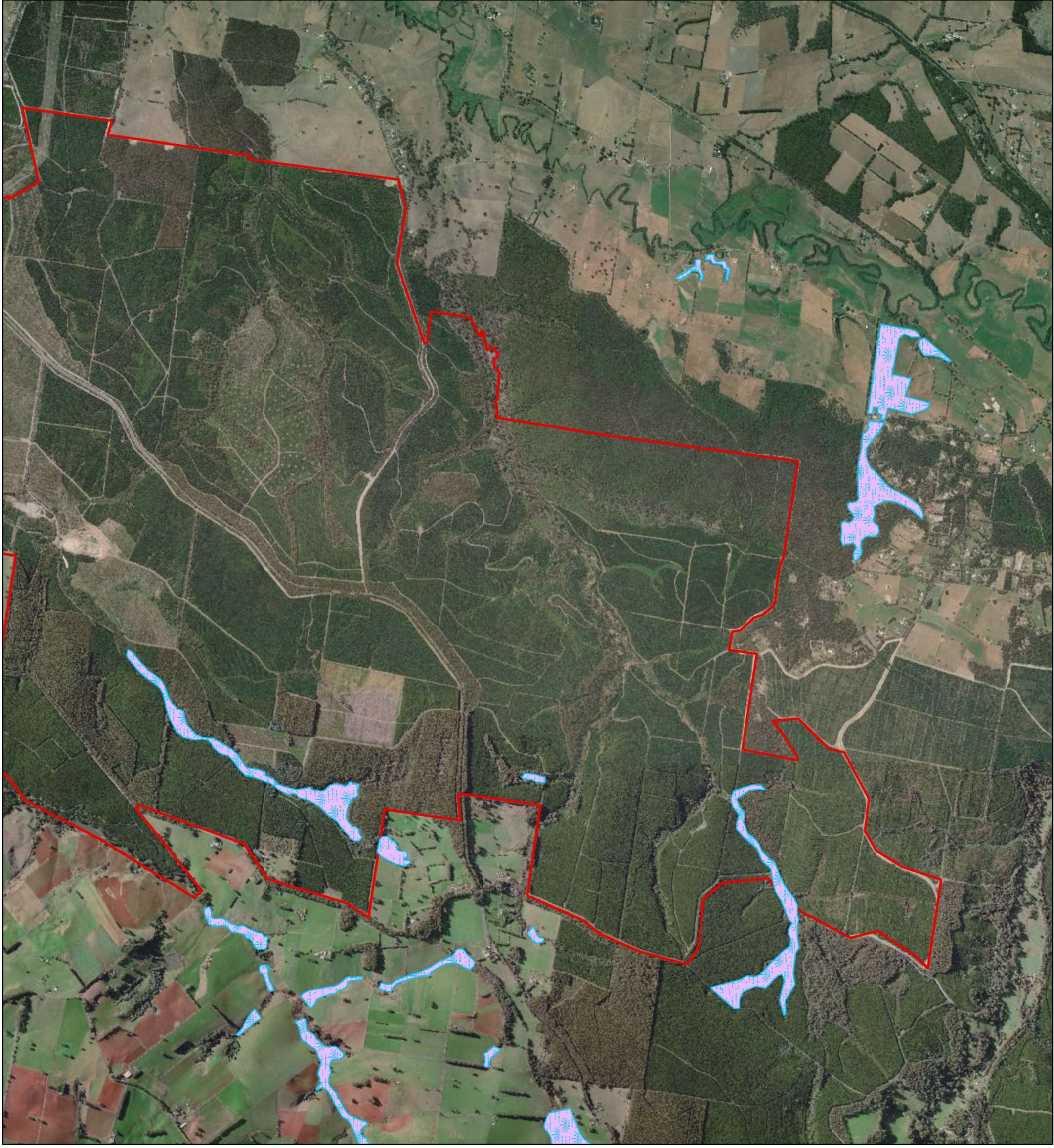


Figure 8a
Current Wetlands within 30km of the study area
Biodiversity Assessment for the Delburn Wind Farm



VicMap Data. The State of Victoria does not warrant the accuracy or completeness of information in this publication and any person using or relying upon such information does so on the basis that the State of Victoria shall bear no responsibility or liability whatsoever for any errors, faults, defects or omissions in the information.



Legend

Study Area

Current Wetlands (DELWP)

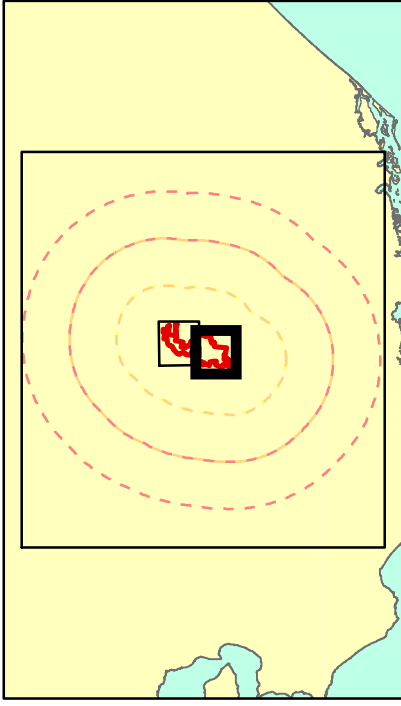
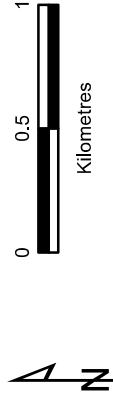
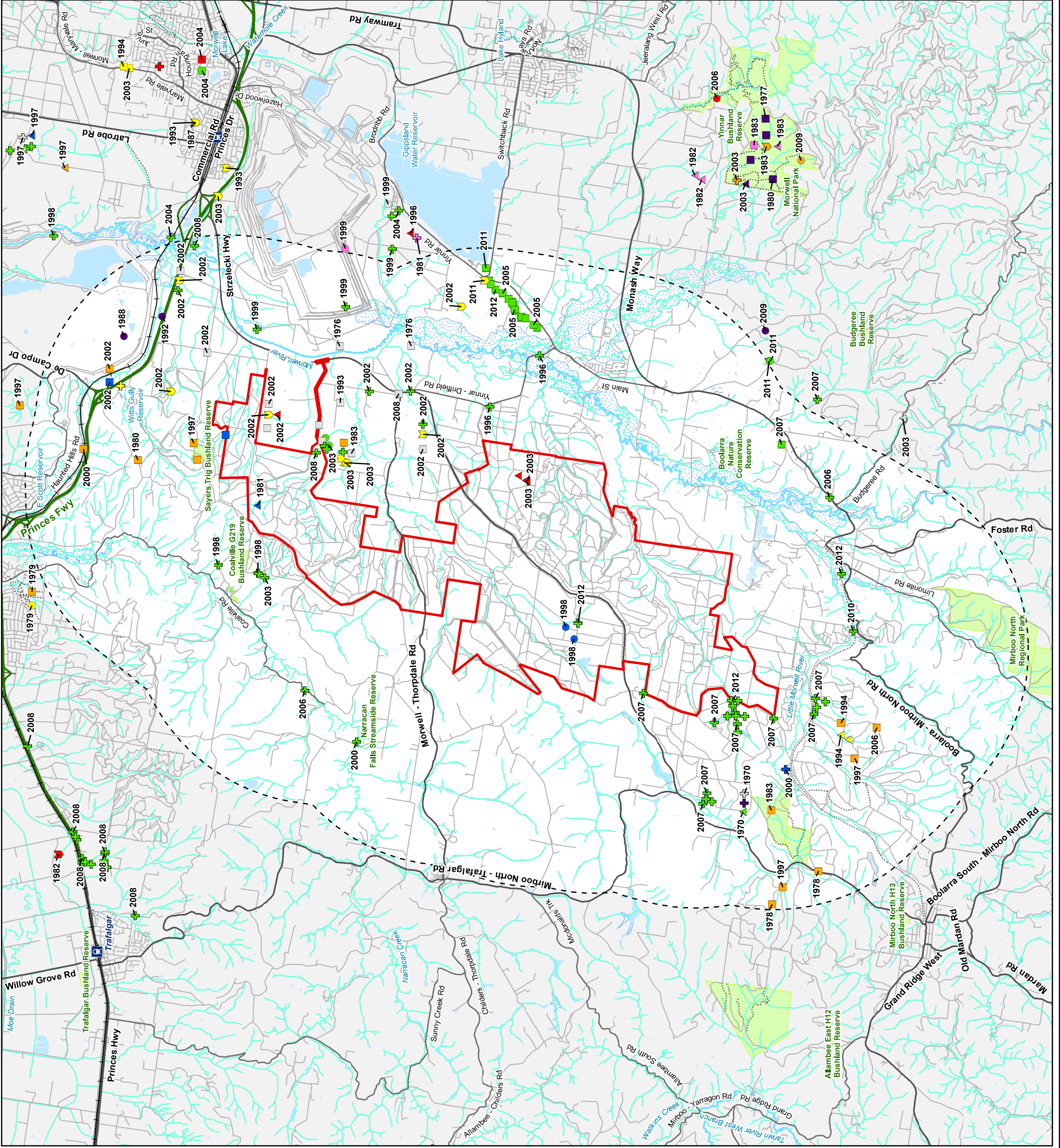


Figure 8b
Current Wetlands within 30km of the study area
Biodiversity Assessment for the Delburn Wind Farm



VicMap Data. The State of Victoria does not warrant the accuracy or completeness of information in this publication and any person using or relying upon such information does so on the basis that the State of Victoria shall bear no responsibility or liability whatsoever for any errors, faults, defects or omissions in the information.



- Legend**
- Study Area

Significant Flora

Annual Bitter-cress

Austral Crane's-bill

Bear's-ear

Bog Gum

Cobra Greenhood

Dwarf Cypress-pine

Fluffy-fruit Wood-sorrel

Giant Honey-myrtle

Green Scentbark

Grey Billy-buttons

Hairpin Banksia

Heath Platysace

Matted Flax-lily

Mountain Bird-orchid

Orange-tip Finger-orchid

Oval Fork-fern

Prickly Beauty

Annual Bitter-cress

Austral Crane's-bill

Bear's-ear

Bog Gum

Cobra Greenhood

Dwarf Cypress-pine

Fluffy-fruit Wood-sorrel

Giant Honey-myrtle

Green Scentbark

Grey Billy-buttons

Hairpin Banksia

Heath Platysace

Matted Flax-lily

Mountain Bird-orchid

Orange-tip Finger-orchid

Oval Fork-fern

Prickly Beauty
-
- Figure 9**
Previously documented significant flora within 5km of the study area
Biodiversity Assessment for the Delburn Wind Farm
-
- VBA 2018. Victorian Biodiversity Atlas // Sourced from: VBA, FLORA205, VBA, FLORA100, VBA, FAUNA205 and VBA, FAUNA100. January 2018 © The State of Victoria, Department of Environment, Land, Water and Planning. Records prior to 1949 not shown.

VicMap Data: The State of Victoria does not warrant the accuracy or completeness of information in this publication and any person using or relying upon such information does so on the basis that the State of Victoria shall bear no responsibility or liability whatsoever for any errors, faults, defects or omissions in the information.

10745_Fig09_SpfFlora 17/12/2020 malsey