

APPENDIX 5 - NATIVE VEGETATION REMOVAL REPORT

Native vegetation removal report

This report provides information to support an application to remove, destroy or lop native vegetation in accordance with the *Guidelines for the removal, destruction or lopping of native vegetation*. The report is **not an assessment by DELWP** of the proposed native vegetation removal. Native vegetation information and offset requirements have been determined using spatial data provided by the applicant or their consultant.

Date of issue: 18/09/2020

Time of issue: 10:44 am

Report ID: EHP_2020_171

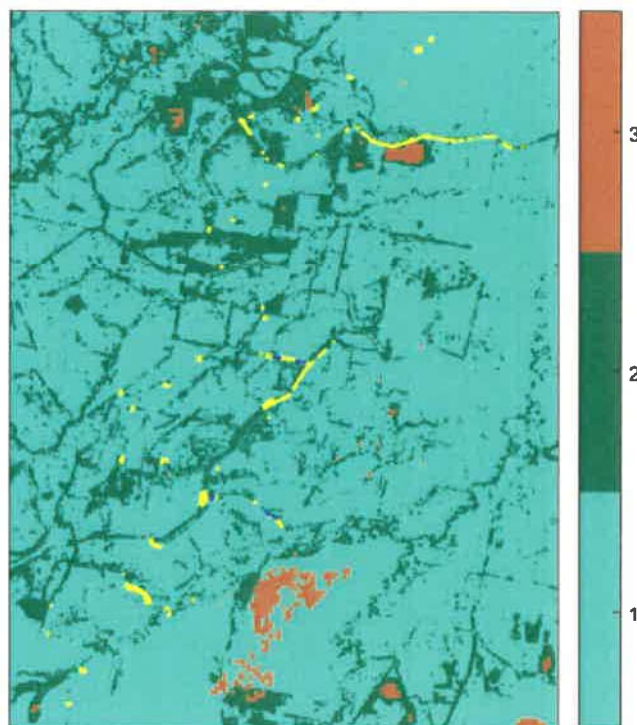
Project ID

EHP10745_Delburn_WEF_VG94

Assessment pathway

Assessment pathway	Detailed Assessment Pathway
Extent including past and proposed	12.344 ha
Extent of past removal	0.000 ha
Extent of proposed removal	12.344 ha
No. Large trees proposed to be removed	49
Location category of proposed removal	Location 3 The native vegetation is in an area where the removal of less than 0.5 hectares could have a significant impact on habitat for one or more rare or threatened species. The native vegetation is also in an area mapped as an endangered Ecological Vegetation Class (as per the statewide EVC map).

1. Location map



Offset requirements if a permit is granted

Any approval granted will include a condition to obtain an offset that meets the following requirements:

General offset amount¹	0.375 general habitat units
Vicinity	West Gippsland Catchment Management Authority (CMA) or Latrobe City, South Gippsland Shire Council
Minimum strategic biodiversity value score ²	0.319
Large trees*	4 large trees
Species offset amount³	9.492 species units of habitat for Strzelecki Gum, <i>Eucalyptus strzeleckii</i>
Large trees*	45 trees
* The total number of large trees that the offset must protect	49 large trees to be protected in either the general, species or combination across all habitat units protected

NB: values within tables in this document may not add to the totals shown above due to rounding

Appendix 1 includes information about the native vegetation to be removed

Appendix 2 includes information about the rare or threatened species mapped at the site.

Appendix 3 includes maps showing native vegetation to be removed and extracts of relevant species habitat importance maps

¹ The general offset amount required is the sum of all general habitat units in Appendix 1.

² Minimum strategic biodiversity score is 80 per cent of the weighted average score across habitat zones where a general offset is required

³ The species offset amount(s) required is the sum of all species habitat units in Appendix 1.

Next steps

Any proposal to remove native vegetation must meet the application requirements of the Detailed Assessment Pathway and it will be assessed under the Detailed Assessment Pathway.

If you wish to remove the mapped native vegetation you are required to apply for a permit from your local council. Council will refer your application to DELWP for assessment, as required. **This report is not a referral assessment by DELWP.**

This *Native vegetation removal report* must be submitted with your application for a permit to remove, destroy or lop native vegetation.

Refer to the *Guidelines for the removal, destruction or lopping of native vegetation* (the Guidelines) for a full list of application requirements. This report provides information that meets the following application requirements:

- The assessment pathway and reason for the assessment pathway
- A description of the native vegetation to be removed (partly met)
- Maps showing the native vegetation and property (partly met)
- Information about the impacts on rare or threatened species.
- The offset requirements determined in accordance with section 5 of the Guidelines that apply if approval is granted to remove native vegetation.

Additional application requirements must be met including:

- Topographical and land information
- Recent dated photographs
- Details of past native vegetation removal
- An avoid and minimise statement
- A copy of any Property Vegetation Plan that applies
- A defensible space statement as applicable
- A statement about the Native Vegetation Precinct Plan as applicable
- A site assessment report including a habitat hectare assessment of any patches of native vegetation and details of trees
- An offset statement that explains that an offset has been identified and how it will be secured.

© The State of Victoria Department of Environment, Land, Water and Planning Melbourne 2020

This work is licensed under a Creative Commons Attribution 4.0 International licence. You are free to re-use the work under that licence, on the condition that you credit the State of Victoria as author. The licence does not apply to any images, photographs or branding, including the Victorian Coat of Arms, the Victorian Government logo and the Department of Environment, Land, Water and Planning logo. To view a copy of this licence, visit <http://creativecommons.org/licenses/by/3.0/au/deed.en>

Authorised by the Victorian Government, 8 Nicholson Street, East Melbourne.

For more information contact the DELWP Customer Service Centre 136 186

www.delwp.vic.gov.au

Disclaimer

This publication may be of assistance to you but the State of Victoria and its employees do not guarantee that the publication is without flaw of any kind or is wholly appropriate for your particular purposes and therefore disclaims all liability for any error, loss or other consequence which may arise from you relying on any information in this publication.

Obtaining this publication does not guarantee that an application will meet the requirements of Clauses 52.16 or 52.17 of the Victoria Planning Provisions and Victorian planning schemes or that a permit to remove native vegetation will be granted.

Notwithstanding anything else contained in this publication, you must ensure that you comply with all relevant laws, legislation, awards or orders and that you obtain and comply with all permits, approvals and the like that affect, are applicable or are necessary to undertake any action to remove, lop or destroy or otherwise deal with any native vegetation or that apply to matters within the scope of Clauses 52.16 or 52.17 of the Victoria Planning Provisions and Victorian planning schemes.

Appendix 1: Description of native vegetation to be removed

The species-general offset test was applied to your proposal. This test determines if the proposed removal of native vegetation has a proportional impact on any rare or threatened species habitats above the species offset threshold. The threshold is set at 0.005 per cent of the mapped habitat value for a species. When the proportional impact is above the species offset threshold a species offset is required. This test is done for all species mapped at the site. Multiple species offsets will be required if the species offset threshold is exceeded for multiple species.

Where a zone requires species offset(s), the species habitat units for each species in that zone is calculated by the following equation in accordance with the Guidelines:

$$\text{Species habitat units} = \text{extent} \times \text{condition} \times \text{species landscape factor} \times 2, \text{ where the species landscape factor} = 0.5 + (\text{habitat importance score}/2)$$

The species offset amount(s) required is the sum of all species habitat units per zone

Where a zone does not require a species offset, the general habitat units in that zone is calculated by the following equation in accordance with the Guidelines:

$$\text{General habitat units} = \text{extent} \times \text{condition} \times \text{general landscape factor} \times 1.5, \text{ where the general landscape factor} = 0.5 + (\text{strategic biodiversity value score}/2)$$

The general offset amount required is the sum of all general habitat units per zone.

Native vegetation to be removed

Information provided by or on behalf of the applicant in a GIS file							Information calculated by EnSym					
Zone	Type	BioEVC	BioEVC conservation status	Large tree(s)	Partial removal	Condition score	Polygon Extent	Extent without overlap	SBV score	HI score	Habitat units	Offset type
1-B	Patch	strz0029	Endangered	0	no	0.640	0.070	0.070	0.309	0.651	0.074	504558 Strzelecki Gum <i>Eucalyptus strzeleckii</i>
2-M	Patch	gipp0016	Vulnerable	0	no	0.350	0.046	0.046	0.500	0.457	0.024	504558 Strzelecki Gum <i>Eucalyptus strzeleckii</i>
2-B	Patch	gipp0029	Endangered	0	no	0.640	0.169	0.169	0.587	0.766	0.191	504558 Strzelecki Gum <i>Eucalyptus strzeleckii</i>
3-K	Patch	gipp0016	Vulnerable	0	no	0.290	0.004	0.004	0.370		0.001	General
4-K	Patch	gipp0016	Vulnerable	0	no	0.290	0.050	0.050	0.420		0.015	General
5-K	Patch	gipp0016	Vulnerable	0	no	0.290	0.000	0.000	0.440		0.000	General
3-F	Patch	strz0023	Endangered	0	no	0.490	0.153	0.153	0.110	0.588	0.119	504558 Strzelecki Gum <i>Eucalyptus strzeleckii</i>
4-G	Patch	strz0023	Endangered	0	no	0.590	0.422	0.422	0.521	0.797	0.447	504558 Strzelecki Gum <i>Eucalyptus strzeleckii</i>
5-G	Patch	strz0023	Endangered	0	no	0.590	0.010	0.010	0.113	0.573	0.009	504558 Strzelecki Gum <i>Eucalyptus strzeleckii</i>
6-G	Patch	strz0023	Endangered	0	no	0.590	0.004	0.004	0.130	0.700	0.004	504558 Strzelecki Gum <i>Eucalyptus strzeleckii</i>
7-G	Patch	strz0023	Endangered	0	no	0.590	0.003	0.003	0.200	0.740	0.003	504558 Strzelecki Gum <i>Eucalyptus strzeleckii</i>

Information provided by or on behalf of the applicant in a GIS file							Information calculated by EnSym						
Zone	Type	BioEVC	BioEVC conservation status	Large tree(s)	Partial removal	Condition score	Polygon Extent	Extent without overlap	SBV score	HI score	Habitat units	Offset type	
8-H	Patch	strz0023	Endangered	0	no	0.560	0.099	0.099	0.530	0.790	0.099	504558 Strzelecki Gum <i>Eucalyptus strzeleckii</i>	
8-P	Patch	gipp0821	Endangered	0	no	0.210	0.034	0.034	0.120	0.650	0.012	504558 Strzelecki Gum <i>Eucalyptus strzeleckii</i>	
10-B	Patch	strz0029	Endangered	1	no	0.640	0.272	0.272	0.188	0.557	0.271	504558 Strzelecki Gum <i>Eucalyptus strzeleckii</i>	
11-H	Patch	strz0023	Endangered	0	no	0.560	0.099	0.099	0.150	0.672	0.093	504558 Strzelecki Gum <i>Eucalyptus strzeleckii</i>	
12-G	Patch	strz0023	Endangered	2	no	0.590	0.450	0.450	0.526	0.789	0.475	504558 Strzelecki Gum <i>Eucalyptus strzeleckii</i>	
13-D	Patch	strz0029	Endangered	0	no	0.430	0.015	0.015	0.480	0.671	0.011	504558 Strzelecki Gum <i>Eucalyptus strzeleckii</i>	
14-D	Patch	strz0029	Endangered	0	no	0.430	0.357	0.357	0.117	0.500	0.230	504558 Strzelecki Gum <i>Eucalyptus strzeleckii</i>	
15-B	Patch	strz0029	Endangered	0	no	0.640	0.720	0.720	0.119	0.565	0.721	504558 Strzelecki Gum <i>Eucalyptus strzeleckii</i>	
9-P	Patch	strz0821	Endangered	0	no	0.210	0.084	0.084	0.120	0.693	0.030	504558 Strzelecki Gum <i>Eucalyptus strzeleckii</i>	
10-P	Patch	strz0821	Endangered	0	no	0.210	0.107	0.107	0.120	0.656	0.037	504558 Strzelecki Gum <i>Eucalyptus strzeleckii</i>	
16-B	Patch	strz0029	Endangered	2	no	0.640	0.361	0.361	0.406	0.755	0.405	504558 Strzelecki Gum <i>Eucalyptus strzeleckii</i>	
17-D	Patch	strz0029	Endangered	0	no	0.430	0.108	0.108	0.680	0.687	0.079	504558 Strzelecki Gum <i>Eucalyptus strzeleckii</i>	
18-D	Patch	strz0029	Endangered	0	no	0.430	0.000	0.000	0.680	0.630	0.000	504558 Strzelecki Gum <i>Eucalyptus strzeleckii</i>	
19-A	Patch	strz0653	Endangered	0	no	0.550	0.161	0.161	0.130	0.420	0.126	504558 Strzelecki Gum <i>Eucalyptus strzeleckii</i>	
11-O	Patch	strz0937	Endangered	0	no	0.490	0.008	0.008	0.130	0.420	0.006	504558 Strzelecki Gum <i>Eucalyptus strzeleckii</i>	
20-C	Patch	strz0029	Endangered	0	no	0.390	0.006	0.006	0.170	0.670	0.004	504558 Strzelecki Gum <i>Eucalyptus strzeleckii</i>	
12-O	Patch	strz0937	Endangered	0	no	0.490	0.158	0.158	0.490	0.713	0.132	504558 Strzelecki Gum <i>Eucalyptus strzeleckii</i>	
1-T	Patch	strz0023	Endangered	4	no	0.470	0.106	0.106	0.146	0.625	0.081	504558 Strzelecki Gum <i>Eucalyptus strzeleckii</i>	
2-T	Patch	strz0023	Endangered	3	no	0.470	0.069	0.069	0.138	0.573	0.051	504558 Strzelecki Gum <i>Eucalyptus strzeleckii</i>	
3-T	Patch	strz0023	Endangered	0	no	0.470	0.009	0.009	0.110	0.602	0.007	504558 Strzelecki Gum <i>Eucalyptus strzeleckii</i>	
4-T	Patch	strz0023	Endangered	0	no	0.470	0.002	0.002	0.110	0.590	0.001	504558 Strzelecki Gum <i>Eucalyptus strzeleckii</i>	
5-S	Patch	strz0023	Endangered	0	no	0.590	0.054	0.054	0.140	0.521	0.049	504558 Strzelecki Gum <i>Eucalyptus strzeleckii</i>	

Information provided by or on behalf of the applicant in a GIS file							Information calculated by EnSym					
Zone	Type	BioEVC	BioEVC conservation status	Large tree(s)	Partial removal	Condition score	Polygon Extent	Extent without overlap	SBV score	HI score	Habitat units	Offset type
6-S	Patch	strz0023	Endangered	0	no	0.590	0.115	0.115	0.233	0.582	0.107	504558 Strzelecki Gum <i>Eucalyptus strzeleckii</i>
7-S	Patch	strz0023	Endangered	0	no	0.590	0.024	0.024	0.100	0.678	0.024	504558 Strzelecki Gum <i>Eucalyptus strzeleckii</i>
8-S	Patch	strz0023	Endangered	0	no	0.590	0.000	0.000	0.150		0.000	General
9-V	Patch	strz0016	Vulnerable	0	no	0.490	0.069	0.069	0.178	0.519	0.052	504558 Strzelecki Gum <i>Eucalyptus strzeleckii</i>
10-V	Patch	strz0016	Vulnerable	0	no	0.490	0.270	0.270	0.174	0.482	0.196	504558 Strzelecki Gum <i>Eucalyptus strzeleckii</i>
21-B	Patch	strz0029	Endangered	4	no	0.640	0.440	0.440	0.435	0.708	0.481	504558 Strzelecki Gum <i>Eucalyptus strzeleckii</i>
11-W	Patch	gipp0937	Endangered	0	no	0.490	0.175	0.175	0.159	0.580	0.135	504558 Strzelecki Gum <i>Eucalyptus strzeleckii</i>
13-Q	Patch	gipp0029	Endangered	0	no	0.500	0.201	0.201	0.200	0.646	0.165	504558 Strzelecki Gum <i>Eucalyptus strzeleckii</i>
14-Q	Patch	gipp0029	Endangered	1	no	0.500	0.153	0.153	0.520		0.087	General
22-B	Patch	strz0029	Endangered	3	no	0.640	0.151	0.151	0.538	0.768	0.171	504558 Strzelecki Gum <i>Eucalyptus strzeleckii</i>
12-W	Patch	strz0937	Endangered	0	no	0.490	0.262	0.262	0.190	0.543	0.198	504558 Strzelecki Gum <i>Eucalyptus strzeleckii</i>
15-Q	Patch	gipp0029	Endangered	0	no	0.500	0.025	0.025	0.110		0.010	General
16-R	Patch	strz0029	Endangered	1	no	0.350	0.024	0.024	0.140		0.007	General
23-B	Patch	gipp0029	Endangered	0	no	0.640	0.087	0.087	0.600	0.666	0.092	504558 Strzelecki Gum <i>Eucalyptus strzeleckii</i>
24-C	Patch	strz0029	Endangered	1	no	0.390	0.137	0.137	0.510	0.666	0.089	504558 Strzelecki Gum <i>Eucalyptus strzeleckii</i>
13-S	Patch	strz0023	Endangered	0	no	0.590	0.018	0.018	0.500	0.625	0.017	504558 Strzelecki Gum <i>Eucalyptus strzeleckii</i>
14-S	Patch	strz0023	Endangered	0	no	0.590	0.009	0.009	0.500	0.670	0.009	504558 Strzelecki Gum <i>Eucalyptus strzeleckii</i>
15-S	Patch	strz0023	Endangered	0	no	0.590	0.120	0.120	0.356	0.649	0.117	504558 Strzelecki Gum <i>Eucalyptus strzeleckii</i>
16-W	Patch	strz0937	Endangered	0	no	0.490	0.051	0.051	0.490	0.749	0.044	504558 Strzelecki Gum <i>Eucalyptus strzeleckii</i>
25-C	Patch	strz0029	Endangered	0	no	0.390	0.040	0.040	0.170	0.671	0.026	504558 Strzelecki Gum <i>Eucalyptus strzeleckii</i>
18-O	Patch	gipp0937	Endangered	0	no	0.490	0.587	0.587	0.122	0.544	0.444	504558 Strzelecki Gum <i>Eucalyptus strzeleckii</i>
26-G	Patch	strz0023	Endangered	0	no	0.590	0.303	0.303	0.529	0.810	0.324	504558 Strzelecki Gum <i>Eucalyptus strzeleckii</i>

Information provided by or on behalf of the applicant in a GIS file							Information calculated by EnSym					
Zone	Type	BioEVC	BioEVC conservation status	Large tree(s)	Partial removal	Condition score	Polygon Extent	Extent without overlap	SBV score	HI score	Habitat units	Offset type
27-B	Patch	gipp0029	Endangered	0	no	0.640	0.000	0.000	0.140	0.470	0.000	504558 Strzelecki Gum <i>Eucalyptus strzeleckii</i>
28-B	Patch	gipp0029	Endangered	0	no	0.640	0.115	0.115	0.130	0.582	0.116	504558 Strzelecki Gum <i>Eucalyptus strzeleckii</i>
29-G	Patch	strz0023	Endangered	0	no	0.590	0.061	0.061	0.140	0.620	0.059	504558 Strzelecki Gum <i>Eucalyptus strzeleckii</i>
30-G	Patch	strz0023	Endangered	0	yes	0.295	0.000	0.000	0.150	0.740	0.000	504558 Strzelecki Gum <i>Eucalyptus strzeleckii</i>
31-G	Patch	strz0023	Endangered	0	no	0.590	0.021	0.021	0.150	0.740	0.022	504558 Strzelecki Gum <i>Eucalyptus strzeleckii</i>
32-G	Patch	strz0023	Endangered	0	yes	0.295	0.008	0.008	0.140	0.718	0.004	504558 Strzelecki Gum <i>Eucalyptus strzeleckii</i>
33-G	Patch	strz0023	Endangered	0	yes	0.295	0.006	0.006	0.149	0.676	0.003	504558 Strzelecki Gum <i>Eucalyptus strzeleckii</i>
41-O	Patch	strz0937	Endangered	0	no	0.490	0.033	0.033	0.170	0.440	0.023	504558 Strzelecki Gum <i>Eucalyptus strzeleckii</i>
42-O	Patch	strz0937	Endangered	0	no	0.490	0.000	0.000	0.180	0.530	0.000	504558 Strzelecki Gum <i>Eucalyptus strzeleckii</i>
43-O	Patch	strz0937	Endangered	0	no	0.490	0.001	0.001	0.180	0.530	0.001	504558 Strzelecki Gum <i>Eucalyptus strzeleckii</i>
17-S	Patch	strz0023	Endangered	0	no	0.590	0.224	0.224	0.530	0.474	0.195	504558 Strzelecki Gum <i>Eucalyptus strzeleckii</i>
18-S	Patch	strz0023	Endangered	0	no	0.590	0.044	0.044	0.195	0.690	0.044	504558 Strzelecki Gum <i>Eucalyptus strzeleckii</i>
19-T	Patch	strz0023	Endangered	3	no	0.470	0.045	0.045	0.500	0.638	0.035	504558 Strzelecki Gum <i>Eucalyptus strzeleckii</i>
20-T	Patch	strz0023	Endangered	0	no	0.470	0.093	0.093	0.500	0.626	0.071	504558 Strzelecki Gum <i>Eucalyptus strzeleckii</i>
21-T	Patch	strz0023	Endangered	0	yes	0.235	0.004	0.004	0.500	0.671	0.002	504558 Strzelecki Gum <i>Eucalyptus strzeleckii</i>
23-S	Patch	strz0023	Endangered	0	no	0.590	0.048	0.048	0.520	0.750	0.050	504558 Strzelecki Gum <i>Eucalyptus strzeleckii</i>
34-G	Patch	strz0023	Endangered	0	no	0.590	0.022	0.022	0.530	0.820	0.024	504558 Strzelecki Gum <i>Eucalyptus strzeleckii</i>
35-G	Patch	strz0023	Endangered	0	yes	0.295	0.124	0.124	0.169	0.811	0.066	504558 Strzelecki Gum <i>Eucalyptus strzeleckii</i>
25-T	Patch	strz0023	Endangered	0	yes	0.235	0.002	0.002	0.500	0.660	0.001	504558 Strzelecki Gum <i>Eucalyptus strzeleckii</i>
27-T	Patch	strz0023	Endangered	0	yes	0.235	0.007	0.007	0.500	0.602	0.003	504558 Strzelecki Gum <i>Eucalyptus strzeleckii</i>
28-T	Patch	strz0023	Endangered	3	no	0.470	0.060	0.060	0.500	0.550	0.043	504558 Strzelecki Gum <i>Eucalyptus strzeleckii</i>
30-T	Patch	strz0023	Endangered	0	yes	0.235	0.006	0.006	0.160	0.682	0.002	504558 Strzelecki Gum <i>Eucalyptus strzeleckii</i>

Information provided by or on behalf of the applicant in a GIS file							Information calculated by EnSym					
Zone	Type	BioEVC	BioEVC conservation status	Large tree(s)	Partial removal	Condition score	Polygon Extent	Extent without overlap	SBV score	HI score	Habitat units	Offset type
31-T	Patch	strz0023	Endangered	1	no	0.470	0.135	0.135	0.421	0.654	0.105	504558 Strzelecki Gum <i>Eucalyptus strzeleckii</i>
44-R	Patch	strz0029	Endangered	0	no	0.350	0.002	0.002	0.140		0.000	General
36-G	Patch	strz0023	Endangered	0	no	0.590	0.000	0.000	0.540	0.760	0.000	504558 Strzelecki Gum <i>Eucalyptus strzeleckii</i>
37-G	Patch	strz0023	Endangered	0	no	0.590	0.000	0.000	0.540	0.760	0.000	504558 Strzelecki Gum <i>Eucalyptus strzeleckii</i>
38-G	Patch	strz0023	Endangered	0	no	0.590	0.000	0.000	0.150	0.620	0.000	504558 Strzelecki Gum <i>Eucalyptus strzeleckii</i>
39-G	Patch	strz0023	Endangered	0	no	0.590	0.000	0.000	0.150	0.740	0.000	504558 Strzelecki Gum <i>Eucalyptus strzeleckii</i>
40-G	Patch	strz0023	Endangered	0	no	0.590	0.000	0.000	0.140	0.740	0.000	504558 Strzelecki Gum <i>Eucalyptus strzeleckii</i>
41-G	Patch	strz0023	Endangered	0	no	0.590	0.000	0.000	0.140	0.740	0.000	504558 Strzelecki Gum <i>Eucalyptus strzeleckii</i>
42-G	Patch	strz0023	Endangered	0	no	0.590	0.000	0.000	0.140	0.740	0.000	504558 Strzelecki Gum <i>Eucalyptus strzeleckii</i>
43-G	Patch	strz0023	Endangered	0	no	0.590	0.000	0.000	0.150	0.620	0.000	504558 Strzelecki Gum <i>Eucalyptus strzeleckii</i>
44-G	Patch	strz0023	Endangered	0	no	0.590	0.000	0.000	0.150	0.620	0.000	504558 Strzelecki Gum <i>Eucalyptus strzeleckii</i>
45-G	Patch	strz0023	Endangered	0	no	0.590	0.000	0.000	0.140	0.740	0.000	504558 Strzelecki Gum <i>Eucalyptus strzeleckii</i>
46-G	Patch	strz0023	Endangered	0	no	0.590	0.001	0.001	0.150	0.620	0.001	504558 Strzelecki Gum <i>Eucalyptus strzeleckii</i>
47-G	Patch	strz0023	Endangered	0	no	0.590	0.044	0.044	0.120	0.810	0.046	504558 Strzelecki Gum <i>Eucalyptus strzeleckii</i>
48-G	Patch	strz0023	Endangered	0	no	0.590	0.000	0.000	0.120	0.810	0.000	504558 Strzelecki Gum <i>Eucalyptus strzeleckii</i>
45-L	Patch	gipp0016	Vulnerable	0	no	0.490	0.007	0.007	0.520	0.689	0.006	504558 Strzelecki Gum <i>Eucalyptus strzeleckii</i>
46-L	Patch	gipp0016	Vulnerable	0	no	0.490	0.015	0.015	0.520	0.700	0.012	504558 Strzelecki Gum <i>Eucalyptus strzeleckii</i>
47-L	Patch	gipp0016	Vulnerable	1	no	0.490	0.273	0.273	0.412	0.619	0.216	504558 Strzelecki Gum <i>Eucalyptus strzeleckii</i>
48-L	Patch	gipp0016	Vulnerable	0	no	0.490	0.144	0.144	0.260	0.740	0.123	504558 Strzelecki Gum <i>Eucalyptus strzeleckii</i>
49-B	Patch	gipp0029	Endangered	2	no	0.640	0.084	0.084	0.552	0.793	0.096	504558 Strzelecki Gum <i>Eucalyptus strzeleckii</i>
50-L	Patch	strz0016	Vulnerable	0	no	0.490	0.027	0.027	0.435	0.741	0.023	504558 Strzelecki Gum <i>Eucalyptus strzeleckii</i>
51-L	Patch	strz0016	Vulnerable	0	no	0.490	0.038	0.038	0.264	0.687	0.031	504558 Strzelecki Gum <i>Eucalyptus strzeleckii</i>

Information provided by or on behalf of the applicant in a GIS file							Information calculated by EnSym						
Zone	Type	BioEVC	BioEVC conservation status	Large tree(s)	Partial removal	Condition score	Polygon Extent	Extent without overlap	SBV score	HI score	Habitat units	Offset type	
52-L	Patch	gipp0016	Vulnerable	0	no	0.490	0.050	0.050	0.466	0.516	0.037	504558 Strzelecki Gum <i>Eucalyptus strzeleckii</i>	
53-L	Patch	gipp0016	Vulnerable	0	no	0.490	0.001	0.001	0.420		0.001	General	
54-L	Patch	gipp0016	Vulnerable	0	no	0.490	0.001	0.001	0.370	0.440	0.001	504558 Strzelecki Gum <i>Eucalyptus strzeleckii</i>	
55-L	Patch	gipp0016	Vulnerable	0	no	0.490	0.000	0.000	0.370	0.440	0.000	504558 Strzelecki Gum <i>Eucalyptus strzeleckii</i>	
56-L	Patch	gipp0016	Vulnerable	0	no	0.490	0.022	0.022	0.478	0.572	0.017	504558 Strzelecki Gum <i>Eucalyptus strzeleckii</i>	
57-L	Patch	gipp0016	Vulnerable	0	no	0.490	0.008	0.008	0.582	0.444	0.006	504558 Strzelecki Gum <i>Eucalyptus strzeleckii</i>	
58-L	Patch	gipp0016	Vulnerable	0	no	0.490	0.003	0.003	0.427	0.440	0.002	504558 Strzelecki Gum <i>Eucalyptus strzeleckii</i>	
59-L	Patch	gipp0016	Vulnerable	0	no	0.490	0.007	0.007	0.680	0.760	0.006	504558 Strzelecki Gum <i>Eucalyptus strzeleckii</i>	
60-L	Patch	gipp0016	Vulnerable	0	no	0.490	0.001	0.001	0.420		0.000	General	
61-L	Patch	gipp0016	Vulnerable	0	no	0.490	0.002	0.002	0.420		0.001	General	
62-L	Patch	gipp0016	Vulnerable	0	no	0.490	0.005	0.005	0.680	0.760	0.005	504558 Strzelecki Gum <i>Eucalyptus strzeleckii</i>	
63-L	Patch	gipp0016	Vulnerable	1	no	0.490	0.015	0.015	0.420	0.260	0.010	504558 Strzelecki Gum <i>Eucalyptus strzeleckii</i>	
64-L	Patch	gipp0016	Vulnerable	0	no	0.490	0.014	0.014	0.419	0.369	0.009	504558 Strzelecki Gum <i>Eucalyptus strzeleckii</i>	
65-L	Patch	gipp0016	Vulnerable	0	no	0.490	0.113	0.113	0.371	0.414	0.078	504558 Strzelecki Gum <i>Eucalyptus strzeleckii</i>	
66-L	Patch	gipp0016	Vulnerable	0	no	0.490	0.002	0.002	0.370	0.320	0.001	504558 Strzelecki Gum <i>Eucalyptus strzeleckii</i>	
67-L	Patch	gipp0016	Vulnerable	0	no	0.490	0.001	0.001	0.370	0.350	0.001	504558 Strzelecki Gum <i>Eucalyptus strzeleckii</i>	
68-L	Patch	gipp0016	Vulnerable	0	no	0.490	0.000	0.000	0.370	0.350	0.000	504558 Strzelecki Gum <i>Eucalyptus strzeleckii</i>	
69-L	Patch	gipp0016	Vulnerable	0	no	0.490	0.005	0.005	0.370	0.355	0.004	504558 Strzelecki Gum <i>Eucalyptus strzeleckii</i>	
70-L	Patch	gipp0016	Vulnerable	0	no	0.490	0.002	0.002	0.380	0.350	0.001	504558 Strzelecki Gum <i>Eucalyptus strzeleckii</i>	
71-L	Patch	gipp0016	Vulnerable	0	no	0.490	0.017	0.017	0.380	0.350	0.011	504558 Strzelecki Gum <i>Eucalyptus strzeleckii</i>	
72-K	Patch	gipp0016	Vulnerable	0	no	0.290	0.005	0.005	0.340		0.001	General	
73-K	Patch	gipp0016	Vulnerable	0	no	0.290	0.021	0.021	0.320		0.006	General	

Information provided by or on behalf of the applicant in a GIS file							Information calculated by EnSym					
Zone	Type	BioEVC	BioEVC conservation status	Large tree(s)	Partial removal	Condition score	Polygon Extent	Extent without overlap	SBV score	HI score	Habitat units	Offset type
74-K	Patch	gipp0016	Vulnerable	0	no	0.290	0.012	0.012	0.370		0.004	General
75-K	Patch	gipp0016	Vulnerable	0	no	0.290	0.000	0.000	0.370		0.000	General
76-K	Patch	gipp0016	Vulnerable	0	no	0.290	0.002	0.002	0.370		0.000	General
77-K	Patch	gipp0016	Vulnerable	0	no	0.290	0.005	0.005	0.370		0.001	General
78-K	Patch	gipp0016	Vulnerable	0	no	0.290	0.001	0.001	0.320		0.000	General
79-K	Patch	gipp0016	Vulnerable	0	no	0.290	0.000	0.000	0.420		0.000	General
80-K	Patch	gipp0016	Vulnerable	0	no	0.290	0.002	0.002	0.420		0.001	General
81-K	Patch	gipp0016	Vulnerable	0	no	0.290	0.047	0.047	0.420	0.240	0.017	504558 Strzelecki Gum <i>Eucalyptus strzeleckii</i>
82-K	Patch	gipp0016	Vulnerable	0	no	0.290	0.006	0.006	0.399		0.002	General
83-K	Patch	gipp0016	Vulnerable	0	no	0.290	0.000	0.000	0.350		0.000	General
84-K	Patch	gipp0016	Vulnerable	0	no	0.290	0.004	0.004	0.350		0.001	General
85-K	Patch	gipp0016	Vulnerable	0	no	0.290	0.001	0.001	0.350		0.000	General
86-K	Patch	gipp0016	Vulnerable	0	no	0.290	0.000	0.000	0.440		0.000	General
51-D	Patch	strz0029	Endangered	0	no	0.430	0.018	0.018	0.120	0.450	0.011	504558 Strzelecki Gum <i>Eucalyptus strzeleckii</i>
52-D	Patch	strz0029	Endangered	0	no	0.430	0.004	0.004	0.403	0.546	0.003	504558 Strzelecki Gum <i>Eucalyptus strzeleckii</i>
53-D	Patch	strz0029	Endangered	0	no	0.430	0.000	0.000	0.680	0.630	0.000	504558 Strzelecki Gum <i>Eucalyptus strzeleckii</i>
54-D	Patch	strz0029	Endangered	0	no	0.430	0.004	0.004	0.680	0.630	0.003	504558 Strzelecki Gum <i>Eucalyptus strzeleckii</i>
32-S	Patch	strz0023	Endangered	0	no	0.590	0.001	0.001	0.500	0.470	0.001	504558 Strzelecki Gum <i>Eucalyptus strzeleckii</i>
33-S	Patch	strz0023	Endangered	0	no	0.590	0.004	0.004	0.500	0.470	0.003	504558 Strzelecki Gum <i>Eucalyptus strzeleckii</i>
34-S	Patch	strz0023	Endangered	0	no	0.590	0.018	0.018	0.500	0.540	0.016	504558 Strzelecki Gum <i>Eucalyptus strzeleckii</i>
35-S	Patch	strz0023	Endangered	2	no	0.590	0.058	0.058	0.305	0.502	0.051	504558 Strzelecki Gum <i>Eucalyptus strzeleckii</i>
36-S	Patch	strz0023	Endangered	0	no	0.590	0.008	0.008	0.439	0.685	0.008	504558 Strzelecki Gum <i>Eucalyptus strzeleckii</i>

Information provided by or on behalf of the applicant in a GIS file							Information calculated by EnSym						
Zone	Type	BioEVC	BioEVC conservation status	Large tree(s)	Partial removal	Condition score	Polygon Extent	Extent without overlap	SBV score	HI score	Habitat units	Offset type	
37-S	Patch	strz0023	Endangered	0	no	0.590	0.074	0.074	0.329	0.623	0.071	504558 Strzelecki Gum <i>Eucalyptus strzeleckii</i>	
38-S	Patch	strz0023	Endangered	0	no	0.590	0.008	0.008	0.140		0.004	General	
39-S	Patch	strz0023	Endangered	0	no	0.590	0.139	0.139	0.115	0.443	0.118	504558 Strzelecki Gum <i>Eucalyptus strzeleckii</i>	
40-S	Patch	strz0023	Endangered	0	no	0.590	0.021	0.021	0.160	0.733	0.021	504558 Strzelecki Gum <i>Eucalyptus strzeleckii</i>	
41-S	Patch	strz0023	Endangered	0	no	0.590	0.000	0.000	0.170		0.000	General	
87-K	Patch	strz0016	Vulnerable	0	no	0.290	0.005	0.005	0.179	0.792	0.003	504558 Strzelecki Gum <i>Eucalyptus strzeleckii</i>	
88-K	Patch	strz0016	Vulnerable	0	no	0.290	0.006	0.006	0.170	0.810	0.003	504558 Strzelecki Gum <i>Eucalyptus strzeleckii</i>	
89-L	Patch	gipp0016	Vulnerable	0	no	0.490	0.085	0.085	0.590	0.744	0.072	504558 Strzelecki Gum <i>Eucalyptus strzeleckii</i>	
55-G	Patch	strz0023	Endangered	0	no	0.590	0.148	0.148	0.181	0.521	0.132	504558 Strzelecki Gum <i>Eucalyptus strzeleckii</i>	
42-S	Patch	strz0023	Endangered	0	no	0.590	0.004	0.004	0.510	0.560	0.004	504558 Strzelecki Gum <i>Eucalyptus strzeleckii</i>	
43-S	Patch	strz0023	Endangered	0	no	0.590	0.013	0.013	0.419	0.545	0.012	504558 Strzelecki Gum <i>Eucalyptus strzeleckii</i>	
56-F	Patch	strz0023	Endangered	0	no	0.490	0.083	0.083	0.110	0.653	0.067	504558 Strzelecki Gum <i>Eucalyptus strzeleckii</i>	
91-P	Patch	strz0821	Endangered	0	no	0.210	0.024	0.024	0.120	0.700	0.009	504558 Strzelecki Gum <i>Eucalyptus strzeleckii</i>	
44-V	Patch	strz0016	Vulnerable	0	no	0.490	0.000	0.000	0.178	0.516	0.000	504558 Strzelecki Gum <i>Eucalyptus strzeleckii</i>	
45-V	Patch	strz0016	Vulnerable	0	no	0.490	0.001	0.001	0.180	0.530	0.001	504558 Strzelecki Gum <i>Eucalyptus strzeleckii</i>	
57-B	Patch	strz0029	Endangered	0	no	0.640	0.003	0.003	0.120	0.540	0.003	504558 Strzelecki Gum <i>Eucalyptus strzeleckii</i>	
1-TS	Scattered Tree	gipp0029	Endangered	0	no	0.200	0.031	0.031	0.590	0.750	0.011	504558 Strzelecki Gum <i>Eucalyptus strzeleckii</i>	
2-TS	Scattered Tree	gipp0016	Vulnerable	0	no	0.200	0.031	0.031	0.300		0.006	General	
5-TS	Scattered Tree	strz0023	Endangered	0	no	0.200	0.031	0.001	0.150		0.000	General	
6-TS	Scattered Tree	strz0023	Endangered	0	no	0.200	0.031	0.004	0.150	0.660	0.001	504558 Strzelecki Gum <i>Eucalyptus strzeleckii</i>	

Information provided by or on behalf of the applicant in a GIS file							Information calculated by EnSym					
Zone	Type	BioEVC	BioEVC conservation status	Large tree(s)	Partial removal	Condition score	Polygon Extent	Extent without overlap	SBV score	HI score	Habitat units	Offset type
1-TL	Scattered Tree	gipp0016	Vulnerable	1	no	0.200	0.070	0.070	0.420		0.015	General
3-TL	Scattered Tree	gipp0029	Vulnerable	1	no	0.200	0.070	0.065	0.600	0.720	0.022	504558 Strzelecki Gum <i>Eucalyptus strzeleckii</i>
4-TL	Scattered Tree	strz0023	Endangered	1	no	0.200	0.070	0.050	0.160	0.720	0.017	504558 Strzelecki Gum <i>Eucalyptus strzeleckii</i>
5-TL	Scattered Tree	strz0023	Endangered	1	no	0.200	0.070	0.049	0.190	0.730	0.017	504558 Strzelecki Gum <i>Eucalyptus strzeleckii</i>
6-TL	Scattered Tree	strz0023	Endangered	1	no	0.200	0.070	0.038	0.190	0.730	0.013	504558 Strzelecki Gum <i>Eucalyptus strzeleckii</i>
7-TL	Scattered Tree	strz0023	Endangered	1	no	0.200	0.070	0.067	0.150	0.660	0.022	504558 Strzelecki Gum <i>Eucalyptus strzeleckii</i>
9-TL	Scattered Tree	strz0023	Endangered	1	no	0.200	0.070	0.070	0.500	0.660	0.023	504558 Strzelecki Gum <i>Eucalyptus strzeleckii</i>
10-TL	Scattered Tree	strz0029	Endangered	1	no	0.200	0.070	0.070	0.399	0.603	0.023	504558 Strzelecki Gum <i>Eucalyptus strzeleckii</i>
11-TL	Scattered Tree	strz0029	Endangered	1	no	0.200	0.070	0.068	0.140		0.012	General
12-TL	Scattered Tree	strz0016	Vulnerable	1	no	0.200	0.070	0.014	0.180	0.528	0.004	504558 Strzelecki Gum <i>Eucalyptus strzeleckii</i>
59-G	Patch	strz0023	Endangered	0	no	0.590	0.142	0.142	0.147	0.732	0.145	504558 Strzelecki Gum <i>Eucalyptus strzeleckii</i>
60-G	Patch	strz0023	Endangered	0	no	0.590	0.000	0.000	0.150	0.740	0.000	504558 Strzelecki Gum <i>Eucalyptus strzeleckii</i>
61-G	Patch	strz0023	Endangered	0	no	0.590	0.000	0.000	0.150	0.740	0.000	504558 Strzelecki Gum <i>Eucalyptus strzeleckii</i>
62-G	Patch	strz0023	Endangered	0	no	0.590	0.000	0.000	0.150	0.740	0.000	504558 Strzelecki Gum <i>Eucalyptus strzeleckii</i>
63-G	Patch	strz0023	Endangered	0	no	0.590	0.001	0.001	0.120	0.780	0.001	504558 Strzelecki Gum <i>Eucalyptus strzeleckii</i>
64-G	Patch	strz0023	Endangered	0	no	0.590	0.003	0.003	0.120	0.780	0.003	504558 Strzelecki Gum <i>Eucalyptus strzeleckii</i>
65-G	Patch	strz0023	Endangered	0	no	0.590	0.006	0.006	0.120	0.792	0.006	504558 Strzelecki Gum <i>Eucalyptus strzeleckii</i>
66-G	Patch	strz0023	Endangered	0	no	0.590	0.007	0.007	0.120	0.800	0.007	504558 Strzelecki Gum <i>Eucalyptus strzeleckii</i>

Information provided by or on behalf of the applicant in a GIS file							Information calculated by EnSym						
Zone	Type	BioEVC	BioEVC conservation status	Large tree(s)	Partial removal	Condition score	Polygon Extent	Extent without overlap	SBV score	HI score	Habitat units	Offset type	
13-TL	Scattered Tree	gipp0016	Vulnerable	1	no	0.200	0.070	0.054	0.529	0.617	0.018	504558 Strzelecki Gum <i>Eucalyptus strzeleckii</i>	
24-T	Patch	strz0023	Endangered	0	yes	0.235	0.022	0.022	0.160	0.677	0.009	504558 Strzelecki Gum <i>Eucalyptus strzeleckii</i>	
32-T	Patch	strz0023	Endangered	1	no	0.470	0.363	0.363	0.526	0.607	0.274	504558 Strzelecki Gum <i>Eucalyptus strzeleckii</i>	
22-T	Patch	strz0023	Endangered	0	no	0.470	0.038	0.038	0.160	0.691	0.031	504558 Strzelecki Gum <i>Eucalyptus strzeleckii</i>	
1-TA	Scattered Tree	strz0023	Endangered	1	no	0.200	0.070	0.038	0.160	0.696	0.013	504558 Strzelecki Gum <i>Eucalyptus strzeleckii</i>	
2-TA	Scattered Tree	strz0023	Endangered	1	no	0.200	0.070	0.033	0.160	0.690	0.011	504558 Strzelecki Gum <i>Eucalyptus strzeleckii</i>	
1-K	Patch	strz0016	Vulnerable	0	no	0.290	0.632	0.632	0.429		0.196	General	
2-K	Patch	strz0016	Vulnerable	0	no	0.290	0.002	0.002	0.490	0.752	0.001	504558 Strzelecki Gum <i>Eucalyptus strzeleckii</i>	
8-C	Patch	strz0029	Endangered	0	no	0.390	0.039	0.039	0.100	0.590	0.024	504558 Strzelecki Gum <i>Eucalyptus strzeleckii</i>	
9-C	Patch	strz0029	Endangered	0	no	0.390	0.000	0.000	0.100	0.590	0.000	504558 Strzelecki Gum <i>Eucalyptus strzeleckii</i>	
58-B	Patch	strz0029	Endangered	0	no	0.640	0.071	0.071	0.188	0.651	0.075	504558 Strzelecki Gum <i>Eucalyptus strzeleckii</i>	

Appendix 2: Information about impacts to rare or threatened species' habitats on site

This table lists all rare or threatened species' habitats mapped at the site.

Species common name	Species scientific name	Species number	Conservation status	Group	Habitat impacted	% habitat value affected
Strzelecki Gum	<i>Eucalyptus strzeleckii</i>	504558	Vulnerable	Dispersed	Habitat importance map	0.0055
Grey Goshawk	<i>Accipiter novaehollandiae novaehollandiae</i>	10220	Vulnerable	Dispersed	Top ranking map	0.0033
Bog Gum	<i>Eucalyptus kitsoniana</i>	501290	Rare	Dispersed	Habitat importance map	0.0010
Woolly Waterlily	<i>Philydrum lanuginosum</i>	502494	Vulnerable	Dispersed	Habitat importance map	0.0005
Grey Billy-buttons	<i>Craspedia canens</i>	504643	Endangered	Dispersed	Habitat importance map	0.0004
Filmy Maidenhair	<i>Adiantum diaphanum</i>	500131	Endangered	Dispersed	Habitat importance map	0.0003
Veined Spear-grass	<i>Austrostipa rudis subsp. australis</i>	504940	Rare	Dispersed	Habitat importance map	0.0003
Green Scentbark	<i>Eucalyptus fulgens</i>	505175	Rare	Dispersed	Habitat importance map	0.0002
Glossy Grass Skink	<i>Pseudemoia rawlinsoni</i>	12683	Vulnerable	Dispersed	Habitat importance map	0.0002
Spurred Helmet-orchid	<i>Corybas aconitiflorus</i>	500835	Rare	Dispersed	Habitat importance map	0.0002
Thick-lip Spider-orchid	<i>Caladenia tessellata</i>	500547	Vulnerable	Dispersed	Habitat importance map	0.0002
Powerful Owl	<i>Ninox strenua</i>	10248	Vulnerable	Dispersed	Habitat importance map	0.0002
Forest Red-box	<i>Eucalyptus polyanthemus subsp. longior</i>	504754	Rare	Dispersed	Habitat importance map	0.0002
Orange-tip Finger-orchid	<i>Caladenia aurantiaca</i>	500523	Rare	Dispersed	Habitat importance map	0.0001
Slender Pink-fingers	<i>Caladenia vulgaris</i>	504449	Rare	Dispersed	Habitat importance map	0.0001
Swamp Skink	<i>Lissolepis coventryi</i>	12407	Vulnerable	Dispersed	Habitat importance map	0.0001
Swamp Everlasting	<i>Xerochrysum palustre</i>	503763	Vulnerable	Dispersed	Habitat importance map	0.0001
Lace Monitor	<i>Varanus varius</i>	12283	Endangered	Dispersed	Habitat importance map	0.0001
Greater Glider	<i>Petauroides volans</i>	11133	Vulnerable	Dispersed	Habitat importance map	0.0001

White-throated Needletail	<i>Hirundapus caudacutus</i>	10334	Vulnerable	Dispersed	Habitat importance map	0.0001
Lewin's Rail	<i>Lewinia pectoralis pectoralis</i>	10045	Vulnerable	Dispersed	Habitat importance map	0.0001
Matted Flax-lily	<i>Dianella amoena</i>	505084	Endangered	Dispersed	Habitat importance map	0.0001
Southern Toadlet	<i>Pseudophryne semimarmorata</i>	13125	Vulnerable	Dispersed	Habitat importance map	0.0001
Cobra Greenhood	<i>Pterostylis grandiflora</i>	502798	Rare	Dispersed	Habitat importance map	0.0001
Pale Swamp Everlasting	<i>Coronidium gunnianum</i>	504655	Vulnerable	Dispersed	Habitat importance map	0.0001
Purple Blown-grass	<i>Lachnagrostis punicea subsp. filifolia</i>	504222	Rare	Dispersed	Habitat importance map	0.0001
One-flower Early Nancy	<i>Wurmbea uniflora</i>	503583	Rare	Dispersed	Habitat importance map	0.0001
Grey Goshawk	<i>Accipiter novaehollandiae novaehollandiae</i>	10220	Vulnerable	Dispersed	Habitat importance map	0.0001
Silky Kidney-weed	<i>Dichondra sp. 1</i>	505786	Rare	Dispersed	Habitat importance map	0.0001
Black Falcon	<i>Falco subniger</i>	10238	Vulnerable	Dispersed	Habitat importance map	0.0000
Fringed Helmet-orchid	<i>Corybas fimbriatus</i>	500839	Rare	Dispersed	Habitat importance map	0.0000
Fisch's Greenhood	<i>Pterostylis fischii</i>	502795	Rare	Dispersed	Habitat importance map	0.0000
Rush Lily	<i>Sowerbaea juncea</i>	503207	Rare	Dispersed	Habitat importance map	0.0000
Masked Owl	<i>Tyto novaehollandiae novaehollandiae</i>	10250	Endangered	Dispersed	Habitat importance map	0.0000
Wavy Swamp Wallaby-grass	<i>Amphibromus sinuatus</i>	503625	Vulnerable	Dispersed	Habitat importance map	0.0000
Oval Fork-fern	<i>Tmesipteris ovata</i>	503404	Rare	Dispersed	Habitat importance map	0.0000
Annual Fireweed	<i>Senecio glomeratus subsp. longifructus</i>	507144	Rare	Dispersed	Habitat importance map	0.0000
Common Pipewort	<i>Eriocaulon scariosum</i>	501218	Rare	Dispersed	Habitat importance map	0.0000
Baillon's Crake	<i>Porzana pusilla palustris</i>	10050	Vulnerable	Dispersed	Habitat importance map	0.0000
Golden Pomaderris	<i>Pomaderris aurea</i>	502651	Rare	Dispersed	Habitat importance map	0.0000
Australasian Shoveler	<i>Anas rhynchos</i>	10212	Vulnerable	Dispersed	Habitat importance map	0.0000
Leafy Twig-sedge	<i>Cladium procerum</i>	500786	Rare	Dispersed	Habitat importance map	0.0000

Lesser Sand Plover	<i>Charadrius mongolus</i>	10139	Critically endangered	Dispersed	Habitat importance map	0.0000
Hardhead	<i>Aythya australis</i>	10215	Vulnerable	Dispersed	Habitat importance map	0.0000
Purple Blown-grass	<i>Lachnagrostis punicea</i> subsp. <i>punicea</i>	504206	Rare	Dispersed	Habitat importance map	0.0000
Purple Diuris	<i>Diuris punctata</i>	501084	Vulnerable	Dispersed	Habitat importance map	0.0000
Yarra Gum	<i>Eucalyptus yarraensis</i>	501326	Rare	Dispersed	Habitat importance map	0.0000
Rough Blown-grass	<i>Lachnagrostis rudis</i> subsp. <i>rudis</i>	500159	Endangered	Dispersed	Habitat importance map	0.0000
Martin's Toadlet	<i>Uperoleia martini</i>	13930	Critically endangered	Dispersed	Habitat importance map	0.0000
Austral Moonwort	<i>Botrychium australe</i>	500445	Vulnerable	Dispersed	Habitat importance map	0.0000
Blunt-leaf Pomaderris	<i>Pomaderris helianthemifolia</i> subsp. <i>hispida</i>	505427	Rare	Dispersed	Habitat importance map	0.0000
Maroon Leek-orchid	<i>Prasophyllum frenchii</i>	502709	Endangered	Dispersed	Habitat importance map	0.0000
Filmy Maidenhair	<i>Adiantum diaphanum</i>	500131	Endangered	Dispersed	Top ranking map	0.0000
Robust Spider-orchid	<i>Caladenia valida</i>	501022	Endangered	Dispersed	Habitat importance map	0.0000
Lanky Buttons	<i>Leptorhynchus elongatus</i>	501941	Endangered	Dispersed	Habitat importance map	0.0000
Rough-grain Love-grass	<i>Eragrostis trachycarpa</i>	501197	Rare	Dispersed	Habitat importance map	0.0000
Forest Bitter-cress	<i>Cardamine papillata</i>	505034	Vulnerable	Dispersed	Habitat importance map	0.0000

Habitat group

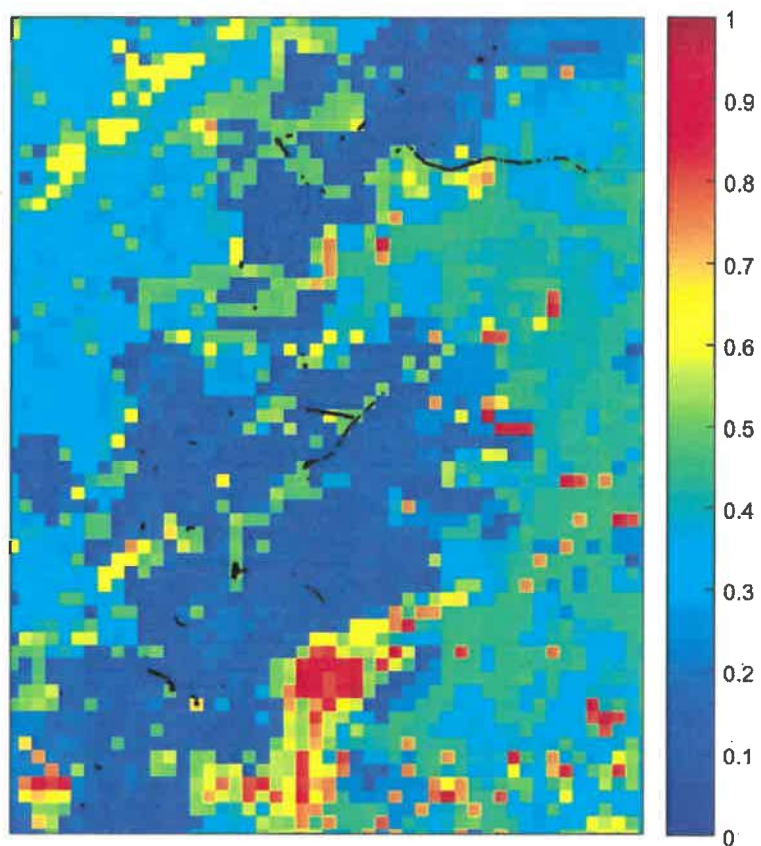
- Highly localised habitat means there is 2000 hectares or less mapped habitat for the species
- Dispersed habitat means there is more than 2000 hectares of mapped habitat for the species

Habitat impacted

- Habitat importance maps are the maps defined in the Guidelines that include all the mapped habitat for a rare or threatened species
- Top ranking maps are the maps defined in the Guidelines that depict the important areas of a dispersed species habitat, developed from the highest habitat importance scores in dispersed species habitat maps and selected VBA records
- Selected VBA record is an area in Victoria that represents a large population, roosting or breeding site etc.

Appendix 3 – Images of mapped native vegetation

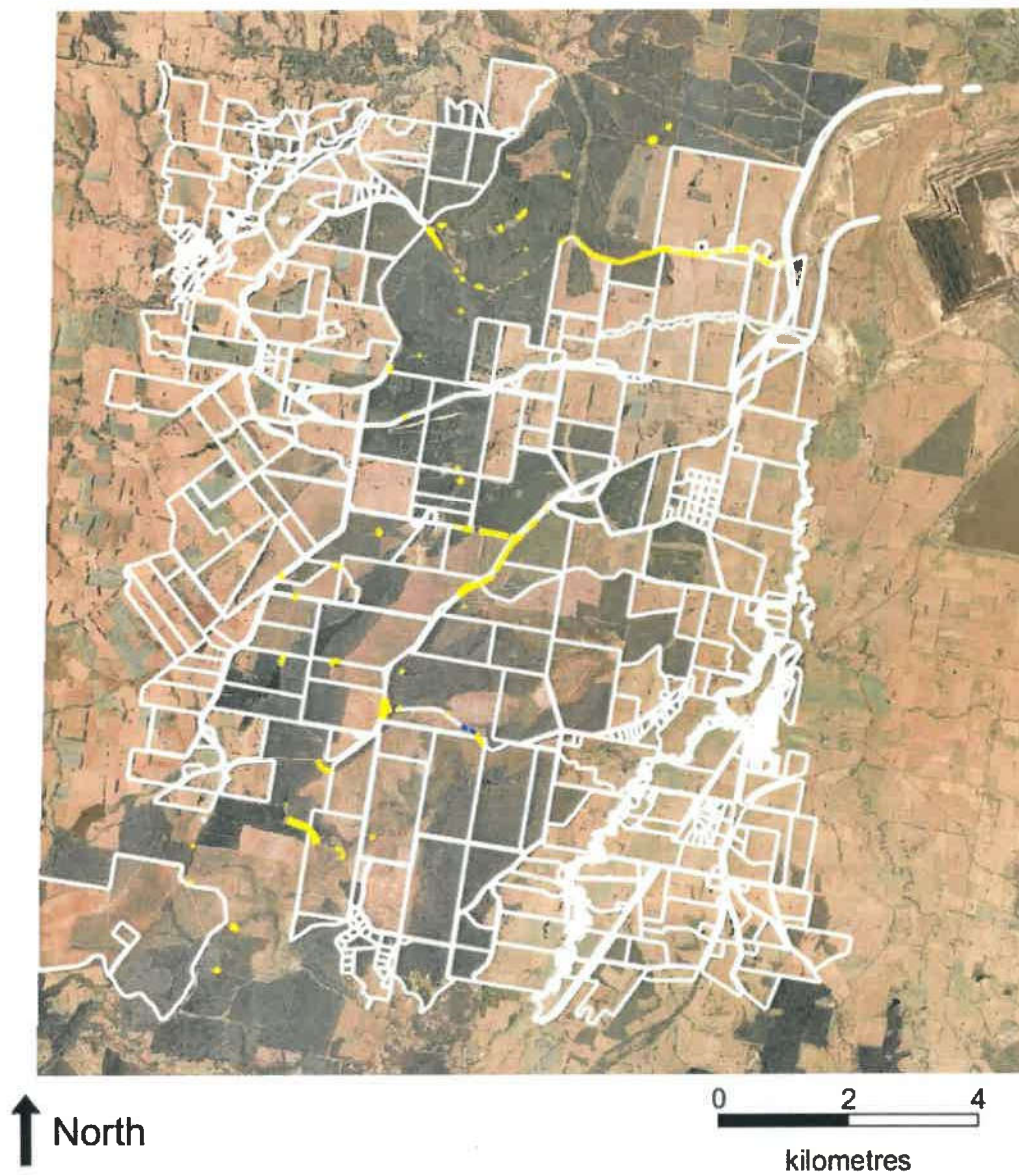
2. Strategic biodiversity values map



3. Aerial photograph showing mapped native vegetation



4. Map of the property in context



Yellow boundaries denote areas of proposed native vegetation removal.

Blue boundaries denote zones of partial removal with a halved condition score.

4. Habitat importance maps

Strzelecki Gum
Eucalyptus strzeleckii
504558

