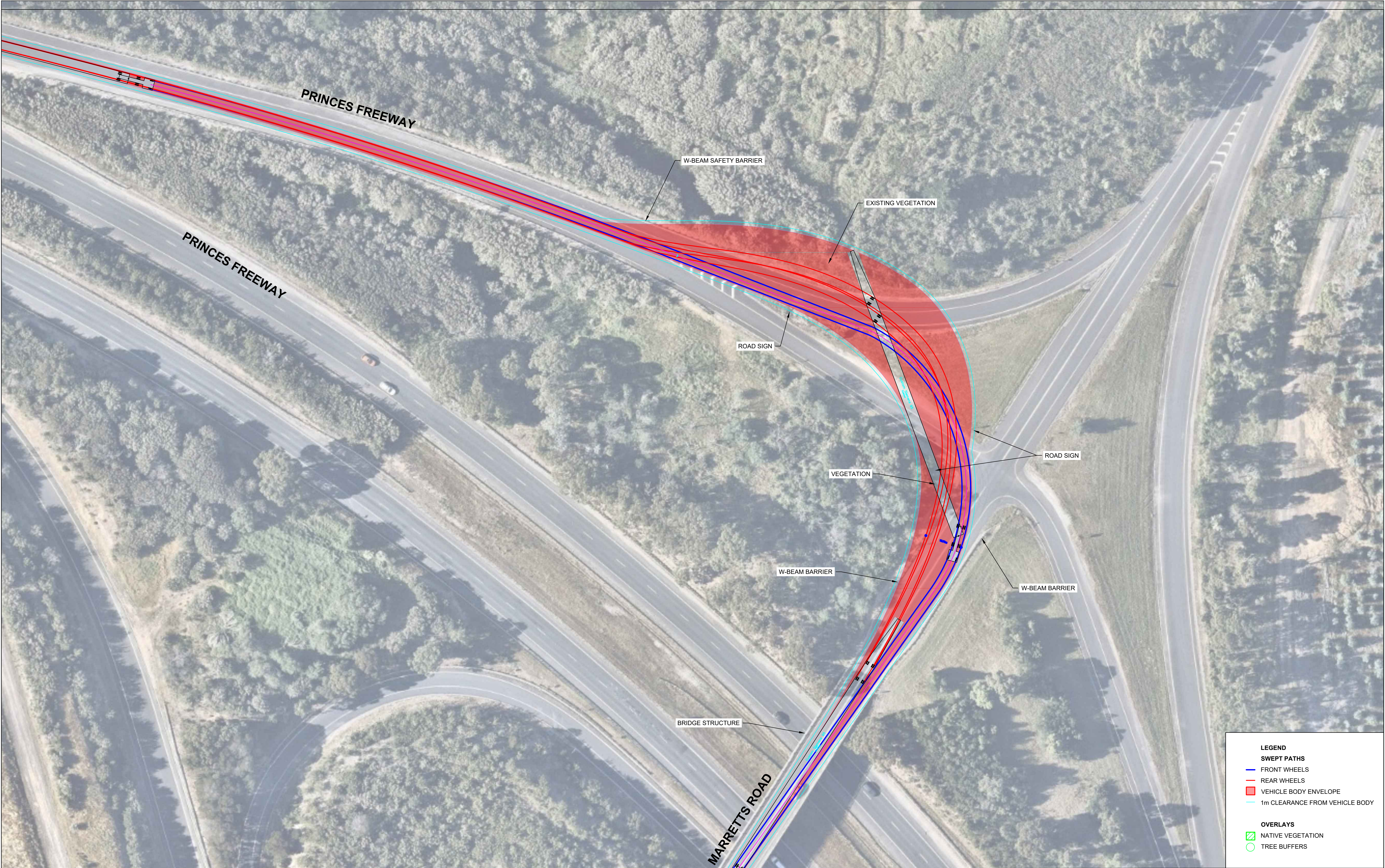


Appendix C

OD vehicle swept path analysis



This drawing is confidential and shall only be used for the purpose of this project. The signing of this title block confirms the design and drafting of this project have been prepared and checked in accordance with the AECOM quality assurance system to ISO 9001-2000.

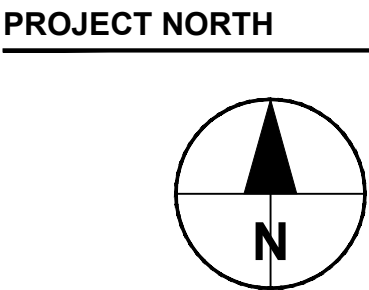
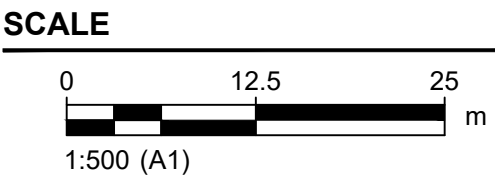
AECOM

CONSULTANT
AECOM Australia Pty Ltd
A.B.N 20 093 846 925
www.aecom.com

PROJECT
DELBURN WIND
FARM TRAFFIC
IMPACT
ASSESSMENT

CLIENT
DELBURN WIND FARM
PTY LTD

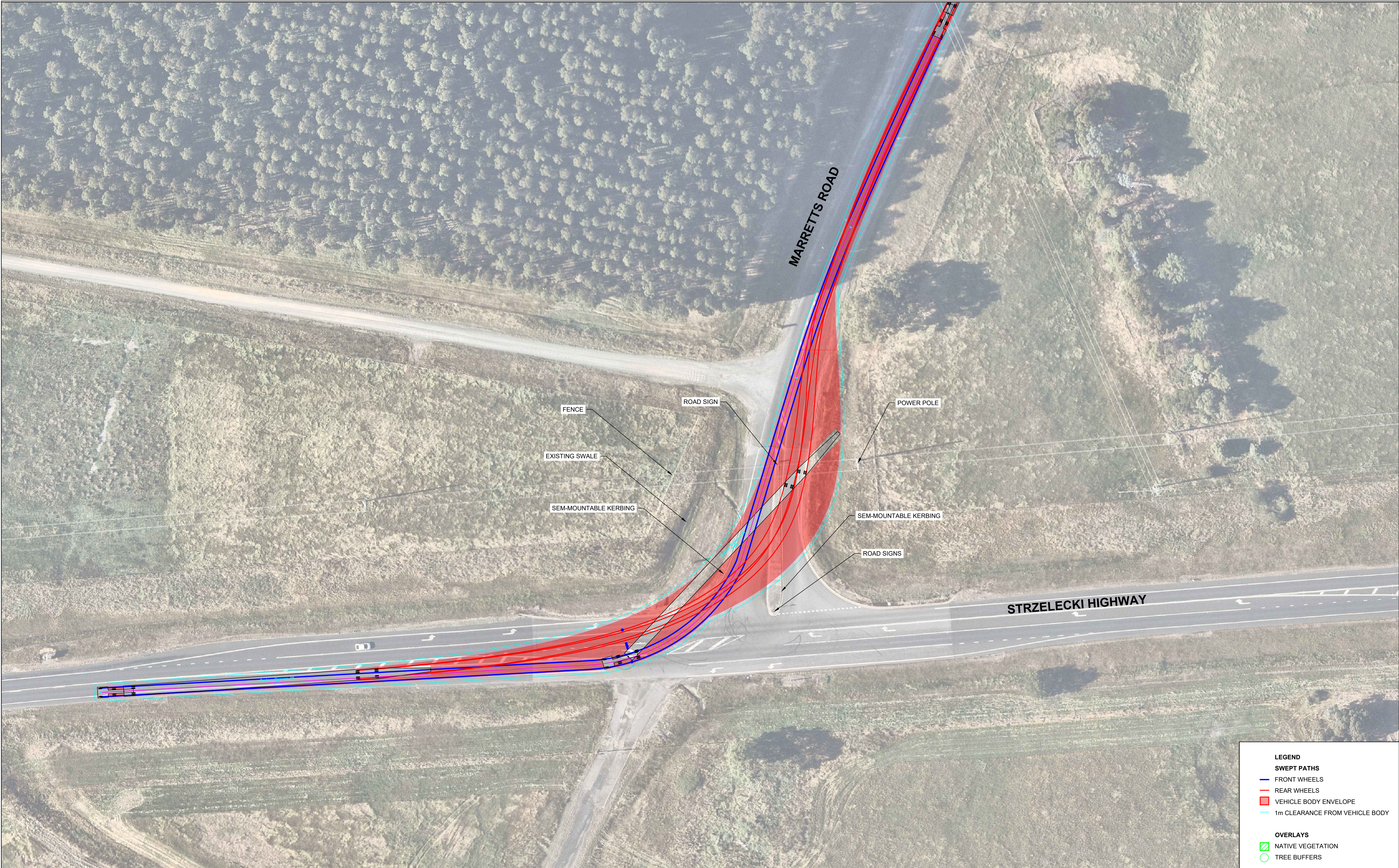
PROJECT DATA		
DATUM	MGA94 Z55	SURVEY



- LEGEND**
- SWEPT PATHS**
- FRONT WHEELS
 - REAR WHEELS
 - VEHICLE BODY ENVELOPE
 - 1m CLEARANCE FROM VEHICLE BODY
- OVERLAYS**
- NATIVE VEGETATION
 - TREE BUFFERS

PROJECT NUMBER
60629780

SHEET TITLE
VEHICLE SWEEP PATHS
PRINCES FREEWAY
MARRETTS ROAD
(PF)



This drawing is confidential and shall only be used for the purpose of this project. The signing of this title block confirms the design and drafting of this project have been prepared and checked in accordance with the AECOM quality assurance system to ISO 9001-2000.

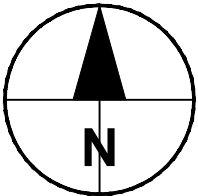
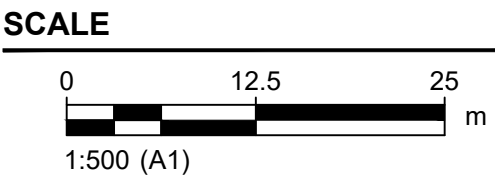
AECOM

CONSULTANT
AECOM Australia Pty Ltd
A.B.N 20 093 846 925
www.aecom.com

PROJECT
DELBURN WIND
FARM TRAFFIC
IMPACT
ASSESSMENT

CLIENT
DELBURN WIND FARM
PTY LTD

PROJECT DATA		
DATUM	MGA94 Z55	SURVEY



PROJECT NUMBER
60629780

SHEET TITLE
VEHICLE SWEEP PATHS
MARRETTS ROAD
STRZELECKI HIGHWAY
(MR)



This drawing is confidential and shall only be used for the purpose of this project. The signing of this title block confirms the design and drafting of this project have been prepared and checked in accordance with the AECOM quality assurance system to ISO 9001-2000.

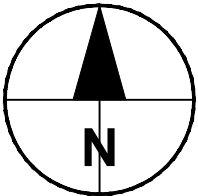
AECOM

CONSULTANT
AECOM Australia Pty Ltd
A.B.N 20 093 846 925
www.aecom.com

PROJECT
DELURN WIND
FARM TRAFFIC
IMPACT
ASSESSMENT

CLIENT
DELURN WIND FARM
PTY LTD

PROJECT DATA		
DATUM	MGA94 Z55	SURVEY



PROJECT NUMBER
60629780

SHEET TITLE
VEHICLE SWEEP PATHS
STRZELECKI HIGHWAY
GOLDEN GULLY ROAD
(GG)



This drawing is confidential and shall only be used for the purpose of this project. The signing of this title block confirms the design and drafting of this project have been prepared and checked in accordance with the AECOM quality assurance system to ISO 9001-2000.

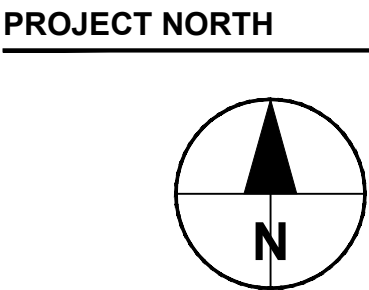
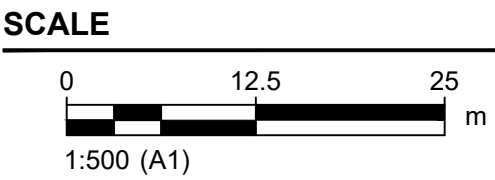
AECOM

CONSULTANT
AECOM Australia Pty Ltd
A.B.N 20 093 846 925
www.aecom.com

PROJECT
**DELBURN WIND
FARM TRAFFIC
IMPACT
ASSESSMENT**

CLIENT
**DELBURN WIND FARM
PTY LTD**

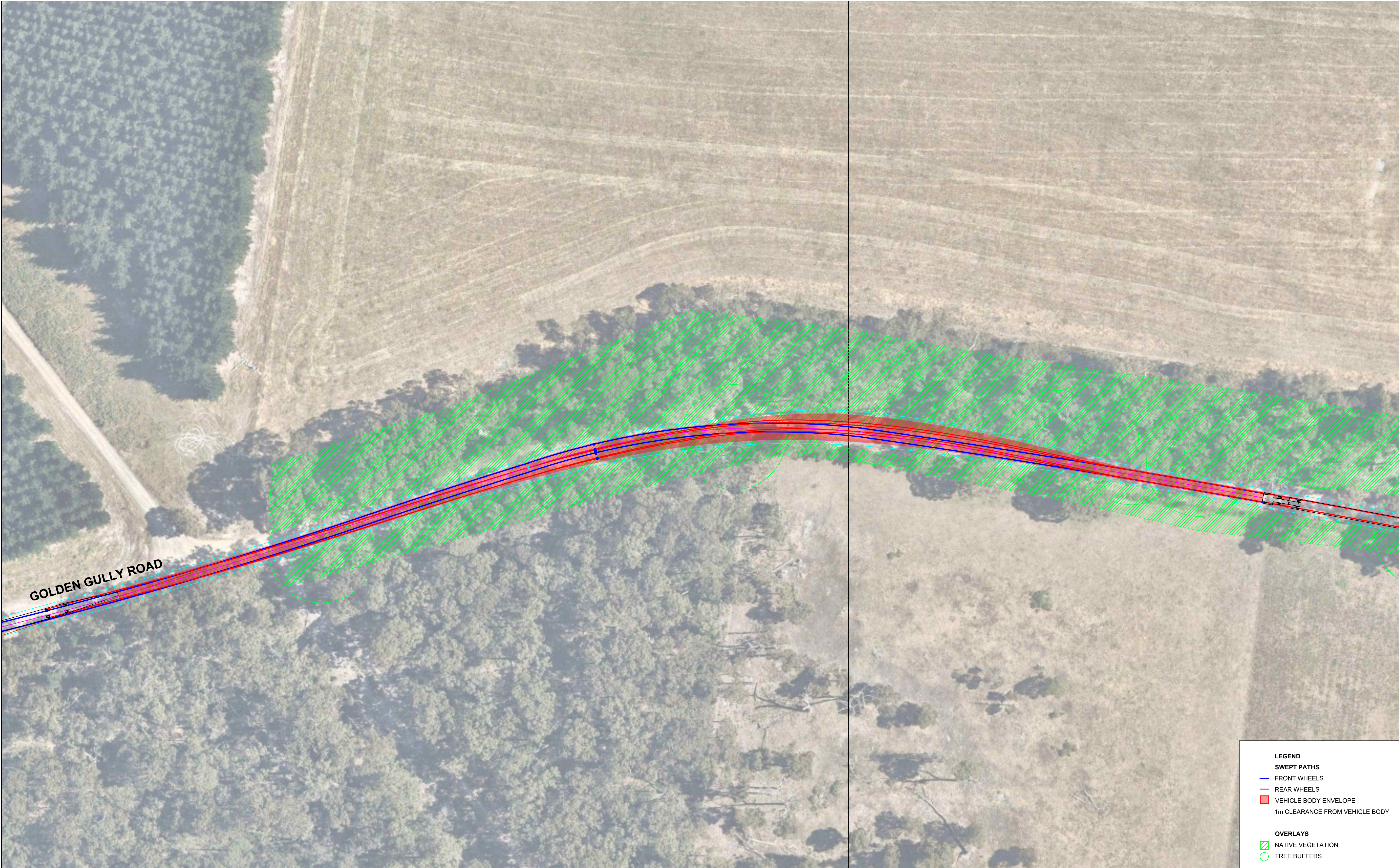
PROJECT DATA		
DATUM	MGA94 Z55	SURVEY



- LEGEND**
- SWEPT PATHS**
- FRONT WHEELS
 - REAR WHEELS
 - VEHICLE BODY ENVELOPE
 - 1m CLEARANCE FROM VEHICLE BODY
- OVERLAYS**
- NATIVE VEGETATION
 - TREE BUFFERS

PROJECT NUMBER
60629780

SHEET TITLE
VEHICLE SWEPT PATHS
GOLDEN GULLY ROAD
PINCH POINT 1
(GG1)



This drawing is confidential and shall only be used for the purpose of this project. The signing of this title block confirms the design and drafting of this project have been prepared and checked in accordance with the AECOM quality assurance system to ISO 9001-2000.

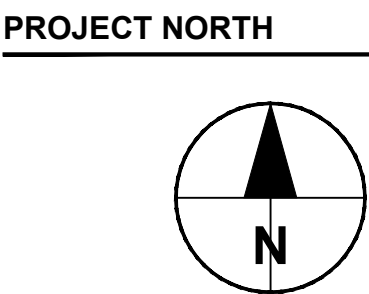
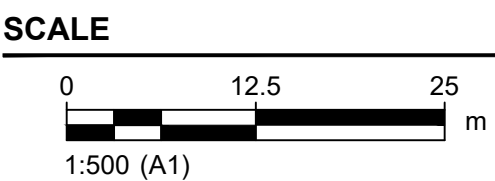
AECOM

CONSULTANT
AECOM Australia Pty Ltd
A.B.N 20 093 846 925
www.aecom.com

PROJECT
DELBURN WIND
FARM TRAFFIC
IMPACT
ASSESSMENT

CLIENT
DELBURN WIND FARM
PTY LTD

PROJECT DATA		
DATUM	MGA94 Z55	SURVEY



- LEGEND**
- SWEPT PATHS**
- FRONT WHEELS
 - REAR WHEELS
 - VEHICLE BODY ENVELOPE
 - 1m CLEARANCE FROM VEHICLE BODY
- OVERLAYS**
- NATIVE VEGETATION
 - TREE BUFFERS

PROJECT NUMBER
60629780

SHEET TITLE
VEHICLE SWEEP PATHS
GOLDEN GULLY ROAD
PINCH POINT 2
(GG2)



This drawing is confidential and shall only be used for the purpose of this project. The signing of this title block confirms the design and drafting of this project have been prepared and checked in accordance with the AECOM quality assurance system to ISO 9001-2000.

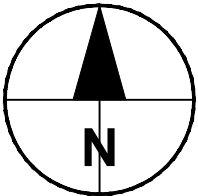
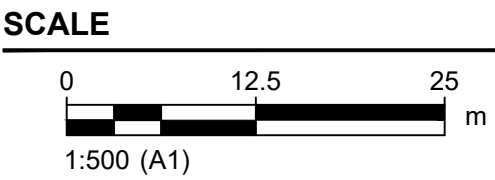
AECOM

CONSULTANT
AECOM Australia Pty Ltd
A.B.N 20 093 846 925
www.aecom.com

PROJECT
DELBURN WIND
FARM TRAFFIC
IMPACT
ASSESSMENT

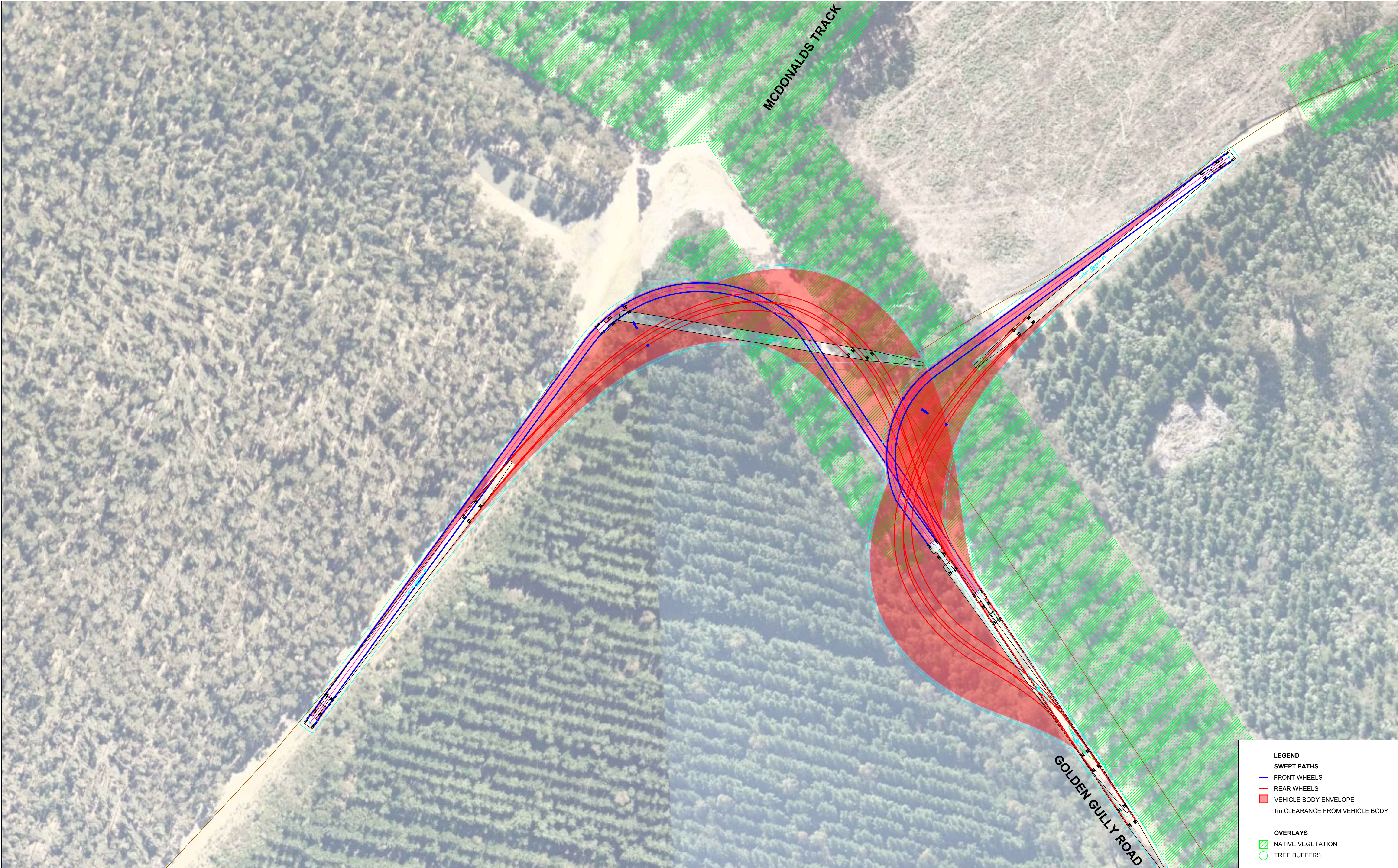
CLIENT
DELBURN WIND FARM
PTY LTD

PROJECT DATA		
DATUM	MGA94 Z55	SURVEY



PROJECT NUMBER
60629780

SHEET TITLE
VEHICLE SWEPT PATHS
GOLDEN GULLY ROAD
PINCH POINT 3
(GG3)



This drawing is confidential and shall only be used for the purpose of this project. The signing of this title block confirms the design and drafting of this project have been prepared and checked in accordance with the AECOM quality assurance system to ISO 9001-2000.

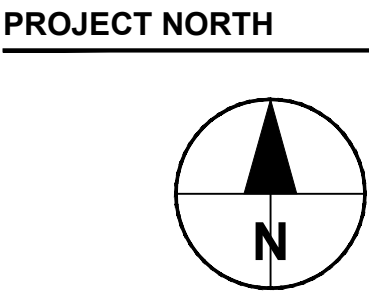
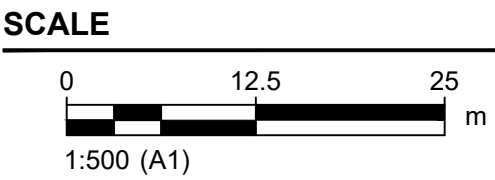
AECOM

CONSULTANT
AECOM Australia Pty Ltd
A.B.N 20 093 846 925
www.aecom.com

PROJECT
DELBURN WIND
FARM TRAFFIC
IMPACT
ASSESSMENT

CLIENT
DELBURN WIND FARM
PTY LTD

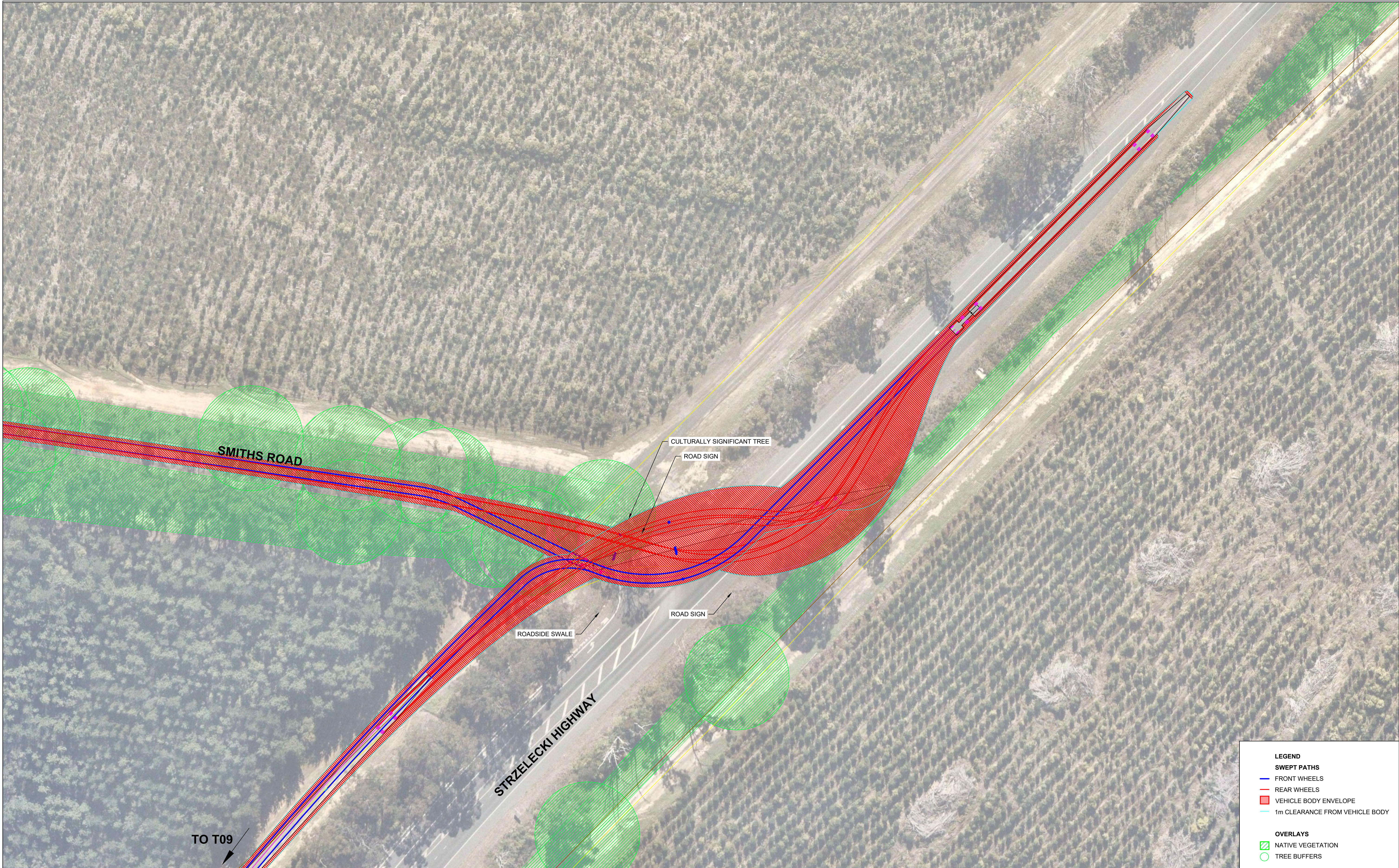
PROJECT DATA		
DATUM	MGA94 Z55	SURVEY



- LEGEND**
- SWEPT PATHS**
- FRONT WHEELS
 - REAR WHEELS
 - VEHICLE BODY ENVELOPE
 - 1m CLEARANCE FROM VEHICLE BODY
- OVERLAYS**
- NATIVE VEGETATION
 - TREE BUFFERS

PROJECT NUMBER
60629780

SHEET TITLE
VEHICLE SWEEP PATHS
GOLDEN GULLY ROAD -
MCDONALDS TRACK
INTERSECTION
(GG4)



This drawing is confidential and shall only be used for the purpose of this project. The signing of this title block confirms the design and drafting of this project have been prepared and checked in accordance with the AECOM quality assurance system to ISO 9001-2000.

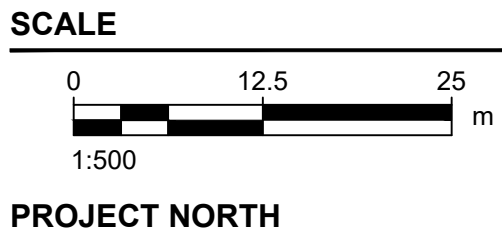
AECOM

CONSULTANT
AECOM Australia Pty Ltd
A.B.N 20 093 846 925
www.aecom.com

PROJECT
DELBURN WIND
FARM TIA

CLIENT
DELBURN WIND
FARM PTY LTD

PROJECT DATA		
DATUM		SURVEY



PROJECT NUMBER
60629780

SHEET TITLE
VEHICLE SWEPT PATHS
STRZELECKI HIGHWAY
SMITHS ROAD
(SR)



This drawing is confidential and shall only be used for the purpose of this project. The signing of this title block confirms the design and drafting of this project have been prepared and checked in accordance with the AECOM quality assurance system to ISO 9001-2000.

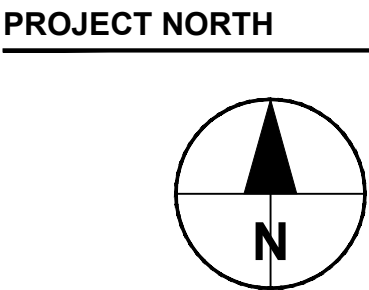
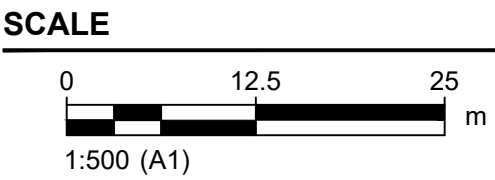
AECOM

CONSULTANT
AECOM Australia Pty Ltd
A.B.N 20 093 846 925
www.aecom.com

PROJECT
**DELBURN WIND
FARM TRAFFIC
IMPACT
ASSESSMENT**

CLIENT
**DELBURN WIND FARM
PTY LTD**

PROJECT DATA		
DATUM	MGA94 Z55	SURVEY



- LEGEND**
- SWEPT PATHS**
- FRONT WHEELS
 - REAR WHEELS
 - VEHICLE BODY ENVELOPE
 - 1m CLEARANCE FROM VEHICLE BODY
- OVERLAYS**
- NATIVE VEGETATION
 - TREE BUFFERS

PROJECT NUMBER
60629780

SHEET TITLE
**VEHICLE SWEPT PATHS
SMITHS ROAD TO T12
INTERSECTION
(SR2)**



This drawing is confidential and shall only be used for the purpose of this project. The signing of this title block confirms the design and drafting of this project have been prepared and checked in accordance with the AECOM quality assurance system to ISO 9001-2000.

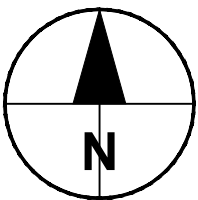
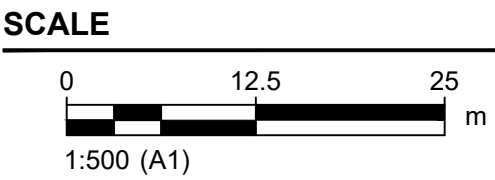
AECOM

CONSULTANT
AECOM Australia Pty Ltd
A.B.N 20 093 846 925
www.aecom.com

PROJECT
DELBURN WIND
FARM TRAFFIC
IMPACT
ASSESSMENT

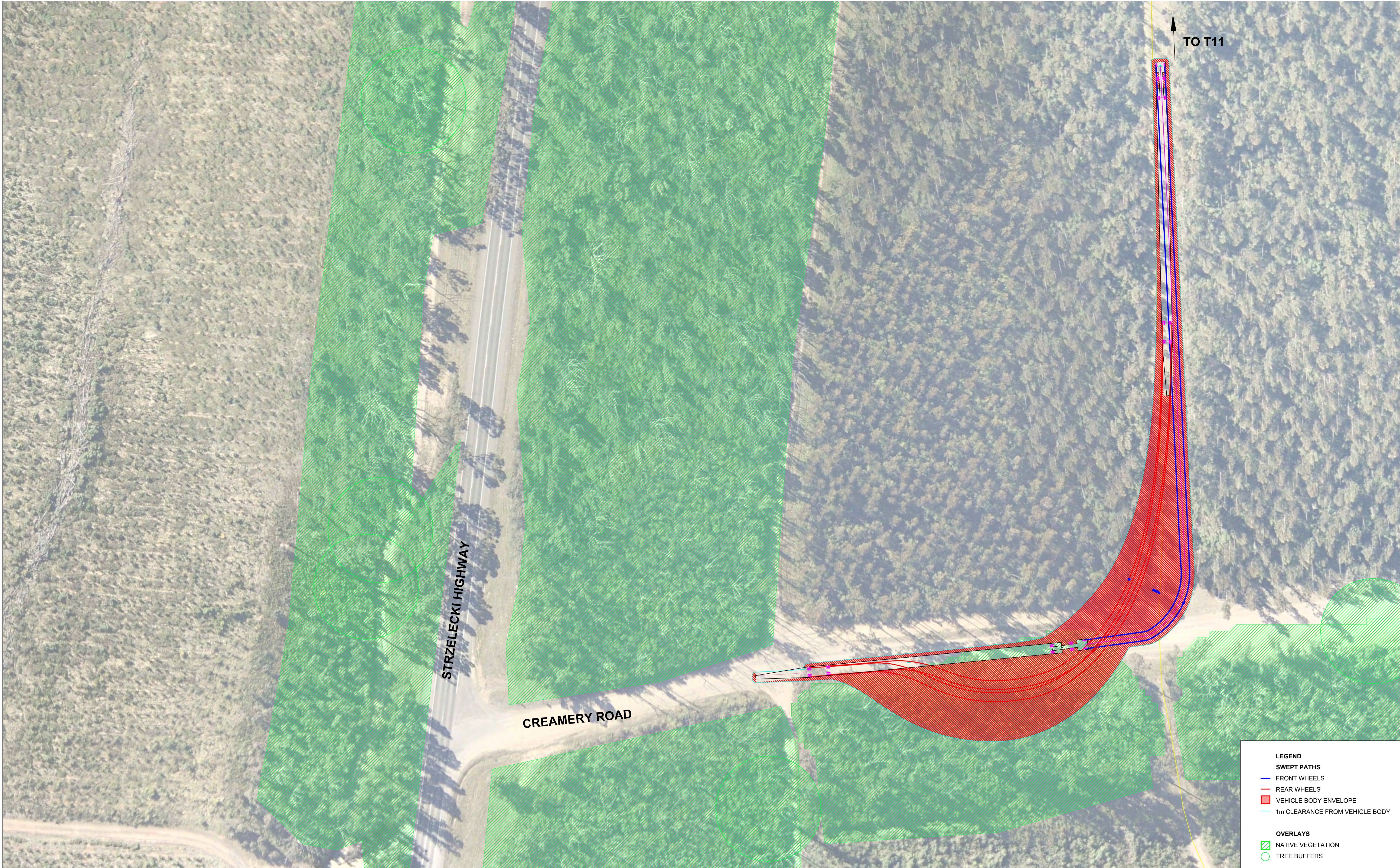
CLIENT
DELBURN WIND FARM
PTY LTD

PROJECT DATA		
DATUM	MGA94 Z55	SURVEY



PROJECT NUMBER
60629780

SHEET TITLE
VEHICLE SWEEP PATHS
STRZELECKI HIGHWAY
CREAMERY ROAD
(CR)



This drawing is confidential and shall only be used for the purpose of this project. The signing of this title block confirms the design and drafting of this project have been prepared and checked in accordance with the AECOM quality assurance system to ISO 9001-2000.

AECOM

CONSULTANT
AECOM Australia Pty Ltd
A.B.N 20 093 846 925
www.aecom.com

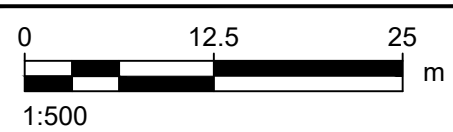
PROJECT
DELBURN WIND
FARM TIA

CLIENT
DELBURN WIND
FARM PTY LTD

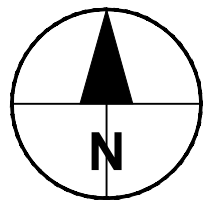
PROJECT DATA

DATUM	SURVEY

SCALE



PROJECT NORTH



LEGEND

SWEPT PATHS

- FRONT WHEELS
- REAR WHEELS
- VEHICLE BODY ENVELOPE
- 1m CLEARANCE FROM VEHICLE BODY

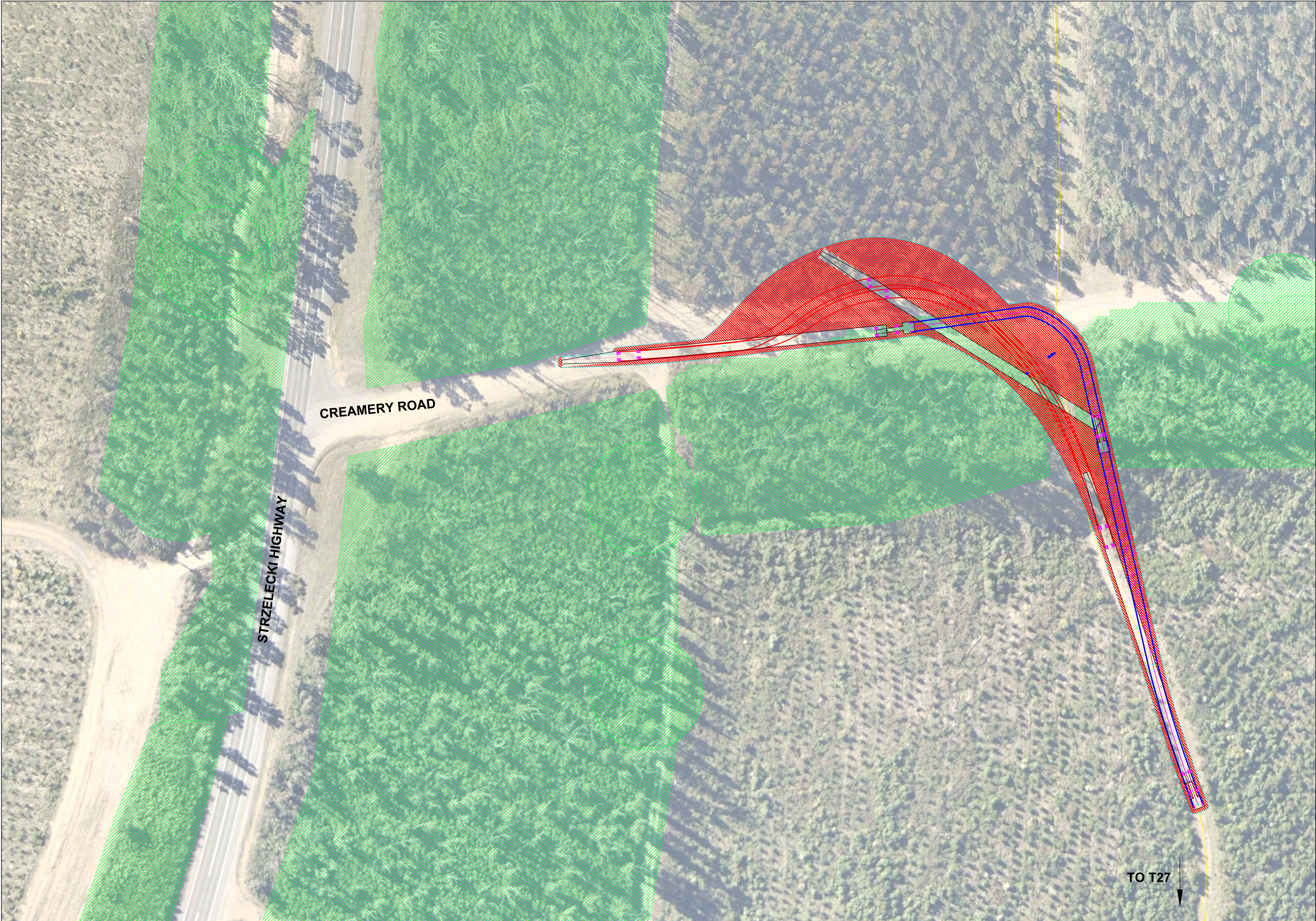
OVERLAYS

- NATIVE VEGETATION
- TREE BUFFERS

PROJECT NUMBER

SHEET TITLE

VEHICLE SWEPT PATHS
STRZELECKI HIGHWAY
CREAMERY ROAD T11
(CR-T11)



This drawing is confidential and shall only be used for the purpose of this project. The signing of this title block confirms the design and drafting of this project have been prepared and checked in accordance with the AECOM quality assurance system to ISO 9001-2000.

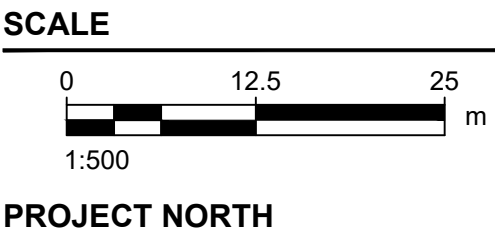
AECOM

CONSULTANT
AECOM Australia Pty Ltd
A.B.N 20 093 846 925
www.aecom.com

PROJECT
DELBURN WIND
FARM TIA

CLIENT
DELBURN WIND
FARM PTY LTD

PROJECT DATA		
DATUM		SURVEY



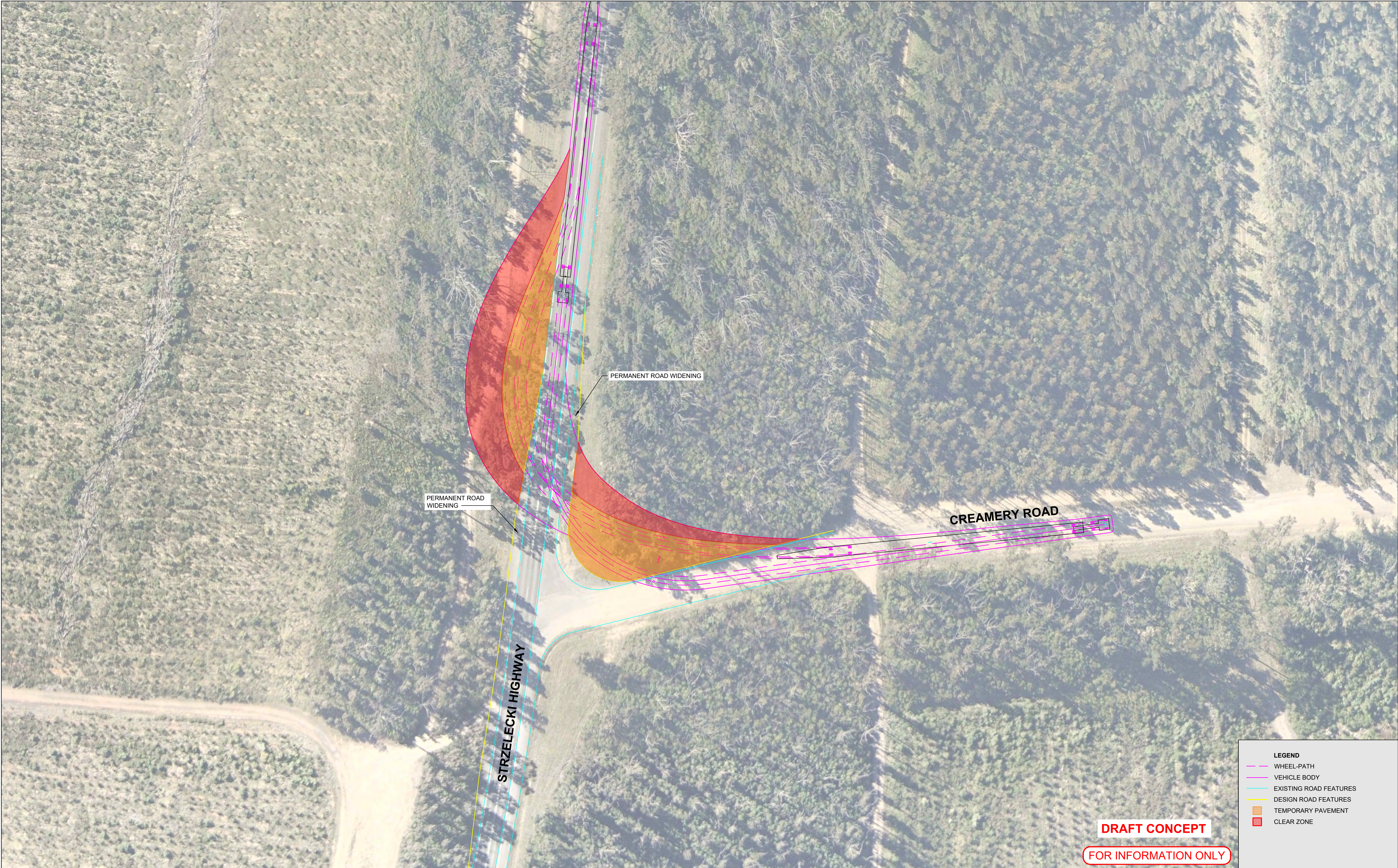
- LEGEND**
- SWEPT PATHS**
- FRONT WHEELS
 - REAR WHEELS
 - VEHICLE BODY ENVELOPE
 - 1m CLEARANCE FROM VEHICLE BODY
- OVERLAYS**
- NATIVE VEGETATION
 - TREE BUFFERS

PROJECT NUMBER

SHEET TITLE
VEHICLE SWEPT PATHS
STRZELECKI HIGHWAY
CREAMERY ROAD T27
(CR-T27)

Appendix D

Intersection concept designs



This drawing is confidential and shall only be used for the purpose of this project. The signing of this title block confirms the design and drafting of this project have been prepared and checked in accordance with the AECOM quality assurance system to ISO 9001-2000.

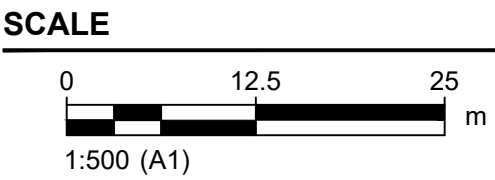
AECOM

CONSULTANT
AECOM Australia Pty Ltd
A.B.N 20 093 846 925
www.aecom.com

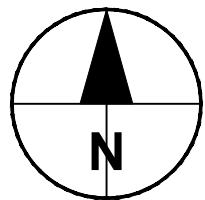
PROJECT
DELBURN WIND
FARM TRAFFIC
IMPACT
ASSESSMENT

CLIENT
DELBURN WIND FARM
PTY LTD

PROJECT DATA		
DATUM	MGA94 Z55	SURVEY



PROJECT NORTH



LEGEND	
	WHEEL-PATH
	VEHICLE BODY
	EXISTING ROAD FEATURES
	DESIGN ROAD FEATURES
	TEMPORARY PAVEMENT
	CLEAR ZONE

PROJECT NUMBER
60629780

SHEET TITLE
STRZELECKI HIGHWAY
CREAMERY ROAD INTERSECTION
(CR)
CONCEPT DESIGN

Appendix E

WTG Visualisations / Photomontages



PROJECT
Delburn Wind Farm

PHOTO ID
33238

LOCATION
Strzelecki Highway 1

COORDINATES
S -38.331301
E 146.248384

CAMERA ALTITUDE
256.6m

DATE / TIME
5/05/2020 1:47:24 PM

HEADING
86°

TURBINE LAYOUT
v 3.4
(180m rotor diameter, 160m hub-height)



Disclaimer: This photomontage has been provided to you by Delburn Wind Farm Pty Ltd (together with its related entity, OSMI Australia Pty Ltd, "Delburn") for use solely by you, on the basis that it will not be communicated or made available to, or relied upon by, any other person without Delburn's prior written consent, or used for any purpose other than informing you. Delburn retains ownership of all copyright and other intellectual property in and with respect to this photomontage. This photomontage is a computer generated simulation which has been prepared to illustrate the predicted appearance of the Delburn Wind Farm Project from a particular vantage point. Whilst Delburn has endeavoured to make this simulation as realistic as possible, Delburn makes no representation and gives no warranties or guarantees, express or implied, as to the accuracy of this photomontage or its resemblance to the Delburn Wind Farm Project, as built. Delburn assumes no responsibility for any action taken in reliance on, or for any damage or loss arising directly or indirectly out of or in connection with the use of or reliance on, this photomontage by you or any other person.



PROJECT
Delburn Wind Farm

PHOTO ID
33241

LOCATION
Strzelecki Highway 2

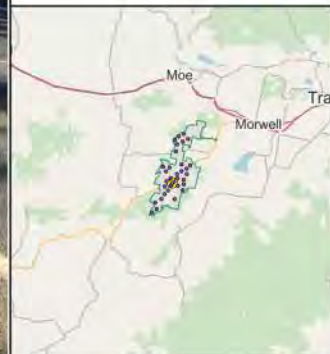
COORDINATES
S -38.321430
E 146.260043

CAMERA ALTITUDE
264.1m

DATE / TIME
5/05/2020 2:09:04 PM

HEADING
187°

TURBINE LAYOUT
v 3.4
(180m rotor diameter, 160m hub-height)



Disclaimer: This photomontage has been provided to you by Delburn Wind Farm Pty Ltd (together with its related entity, OSMI Australia Pty Ltd, "Delburn") for use solely by you, on the basis that it will not be communicated or made available to, or relied upon by, any other person without Delburn's prior written consent, or used for any purpose other than informing you. Delburn retains ownership of all copyright and other intellectual property in and with respect to this photomontage. This photomontage is a computer generated simulation which has been prepared to illustrate the predicted appearance of the Delburn Wind Farm Project from a particular vantage point. Whilst Delburn has endeavoured to make this simulation as realistic as possible, Delburn makes no representation and gives no warranties or guarantees, express or implied, as to the accuracy of this photomontage or its resemblance to the Delburn Wind Farm Project, as built. Delburn assumes no responsibility for any action taken in reliance on, or for any damage or loss arising directly or indirectly out of or in connection with the use of or reliance on, this photomontage by you or any other person.



PROJECT
Delburn Wind Farm

PHOTO ID
33245

LOCATION
Strzelecki Highway 3

COORDINATES
S -38.292731
E 146.293664

CAMERA ALTITUDE
149.2m

DATE / TIME
5/05/2020 2:37:01 PM

HEADING
243°

TURBINE LAYOUT
v 3.4
(180m rotor diameter, 160m hub-height)



Disclaimer: This photomontage has been provided to you by Delburn Wind Farm Pty Ltd (together with its related entity, OSMI Australia Pty Ltd, "Delburn") for use solely by you, on the basis that it will not be communicated or made available to, or relied upon by, any other person without Delburn's prior written consent, or used for any purpose other than informing you. Delburn retains ownership of all copyright and other intellectual property in and with respect to this photomontage. This photomontage is a computer generated simulation which has been prepared to illustrate the predicted appearance of the Delburn Wind Farm Project from a particular vantage point. Whilst Delburn has endeavoured to make this simulation as realistic as possible, Delburn makes no representation and gives no warranties or guarantees, express or implied, as to the accuracy of this photomontage or its resemblance to the Delburn Wind Farm Project, as built. Delburn assumes no responsibility for any action taken in reliance on, or for any damage or loss arising directly or indirectly out of or in connection with the use of or reliance on, this photomontage by you or any other person.



PROJECT
Delburn Wind Farm

PHOTO ID
33247

LOCATION
Strzelecki Highway 4

COORDINATES
S -38.305062
E 146.278196

CAMERA ALTITUDE
207.9m

DATE / TIME
5/05/2020 3:05:26 PM

HEADING
227°

TURBINE LAYOUT
v 3.4
(180m rotor diameter, 160m hub-height)



Disclaimer: This photomontage has been provided to you by Delburn Wind Farm Pty Ltd (together with its related entity, OSMI Australia Pty Ltd, "Delburn") for use solely by you, on the basis that it will not be communicated or made available to, or relied upon by, any other person without Delburn's prior written consent, or used for any purpose other than informing you. Delburn retains ownership of all copyright and other intellectual property in and with respect to this photomontage. This photomontage is a computer generated simulation which has been prepared to illustrate the predicted appearance of the Delburn Wind Farm Project from a particular vantage point. Whilst Delburn has endeavoured to make this simulation as realistic as possible, Delburn makes no representation and gives no warranties or guarantees, express or implied, as to the accuracy of this photomontage or its resemblance to the Delburn Wind Farm Project, as built. Delburn assumes no responsibility for any action taken in reliance on, or for any damage or loss arising directly or indirectly out of or in connection with the use of or reliance on, this photomontage by you or any other person.



PROJECT
Delburn Wind Farm

PHOTO ID
33249

LOCATION
Strzelecki Highway 4

COORDINATES
S -38.305045
E 146.278282

CAMERA ALTITUDE
207.7m

DATE / TIME
5/05/2020 3:20:55 PM

HEADING
39°

TURBINE LAYOUT
v 3.4
(180m rotor diameter, 160m hub-height)



Disclaimer: This photomontage has been provided to you by Delburn Wind Farm Pty Ltd (together with its related entity, OSMI Australia Pty Ltd, "Delburn") for use solely by you, on the basis that it will not be communicated or made available to, or relied upon by, any other person without Delburn's prior written consent, or used for any purpose other than informing you. Delburn retains ownership of all copyright and other intellectual property in and with respect to this photomontage. This photomontage is a computer generated simulation which has been prepared to illustrate the predicted appearance of the Delburn Wind Farm Project from a particular vantage point. Whilst Delburn has endeavoured to make this simulation as realistic as possible, Delburn makes no representation and gives no warranties or guarantees, express or implied, as to the accuracy of this photomontage or its resemblance to the Delburn Wind Farm Project, as built. Delburn assumes no responsibility for any action taken in reliance on, or for any damage or loss arising directly or indirectly out of or in connection with the use of or reliance on, this photomontage by you or any other person.



PROJECT
Delburn Wind Farm

PHOTO ID
33289

LOCATION
Strzelecki Highway 5

COORDINATES
S -38.332102
E 146.232136

CAMERA ALTITUDE
229.7m

DATE / TIME
18/05/2020 8:09:32 AM

HEADING
89°

TURBINE LAYOUT
v 3.4
(180m rotor diameter, 160m hub-height)



Disclaimer: This photomontage has been provided to you by Delburn Wind Farm Pty Ltd (together with its related entity, OSMI Australia Pty Ltd, "Delburn") for use solely by you, on the basis that it will not be communicated or made available to, or relied upon by, any other person without Delburn's prior written consent, or used for any purpose other than informing you. Delburn retains ownership of all copyright and other intellectual property in and with respect to this photomontage. This photomontage is a computer generated simulation which has been prepared to illustrate the predicted appearance of the Delburn Wind Farm Project from a particular vantage point. Whilst Delburn has endeavoured to make this simulation as realistic as possible, Delburn makes no representation and gives no warranties or guarantees, express or implied, as to the accuracy of this photomontage or its resemblance to the Delburn Wind Farm Project, as built. Delburn assumes no responsibility for any action taken in reliance on, or for any damage or loss arising directly or indirectly out of or in connection with the use of or reliance on, this photomontage by you or any other person.



PROJECT
Delburn Wind Farm

PHOTO ID
33290

LOCATION
Strzelecki Highway 5

COORDINATES
S -38.332105
E 146.232134

CAMERA ALTITUDE
229.8m

DATE / TIME
18/05/2020 8:09:35 AM

HEADING
64°

TURBINE LAYOUT
v 3.4
(180m rotor diameter, 160m hub-height)



Disclaimer: This photomontage has been provided to you by Delburn Wind Farm Pty Ltd (together with its related entity, OSMI Australia Pty Ltd, "Delburn") for use solely by you, on the basis that it will not be communicated or made available to, or relied upon by, any other person without Delburn's prior written consent, or used for any purpose other than informing you. Delburn retains ownership of all copyright and other intellectual property in and with respect to this photomontage. This photomontage is a computer generated simulation which has been prepared to illustrate the predicted appearance of the Delburn Wind Farm Project from a particular vantage point. Whilst Delburn has endeavoured to make this simulation as realistic as possible, Delburn makes no representation and gives no warranties or guarantees, express or implied, as to the accuracy of this photomontage or its resemblance to the Delburn Wind Farm Project, as built. Delburn assumes no responsibility for any action taken in reliance on, or for any damage or loss arising directly or indirectly out of or in connection with the use of or reliance on, this photomontage by you or any other person.



PROJECT
Delburn Wind Farm

PHOTO ID
33292

LOCATION
Strzelecki Highway 6

COORDINATES
S -38.331122
E 146.236583

CAMERA ALTITUDE
239.2m

DATE / TIME
18/05/2020 8:12:53 AM

HEADING
85°

TURBINE LAYOUT
v 3.4
(180m rotor diameter, 160m hub-height)



Disclaimer: This photomontage has been provided to you by Delburn Wind Farm Pty Ltd (together with its related entity, OSMI Australia Pty Ltd, "Delburn") for use solely by you, on the basis that it will not be communicated or made available to, or relied upon by, any other person without Delburn's prior written consent, or used for any purpose other than informing you. Delburn retains ownership of all copyright and other intellectual property in and with respect to this photomontage. This photomontage is a computer generated simulation which has been prepared to illustrate the predicted appearance of the Delburn Wind Farm Project from a particular vantage point. Whilst Delburn has endeavoured to make this simulation as realistic as possible, Delburn makes no representation and gives no warranties or guarantees, express or implied, as to the accuracy of this photomontage or its resemblance to the Delburn Wind Farm Project, as built. Delburn assumes no responsibility for any action taken in reliance on, or for any damage or loss arising directly or indirectly out of or in connection with the use of or reliance on, this photomontage by you or any other person.