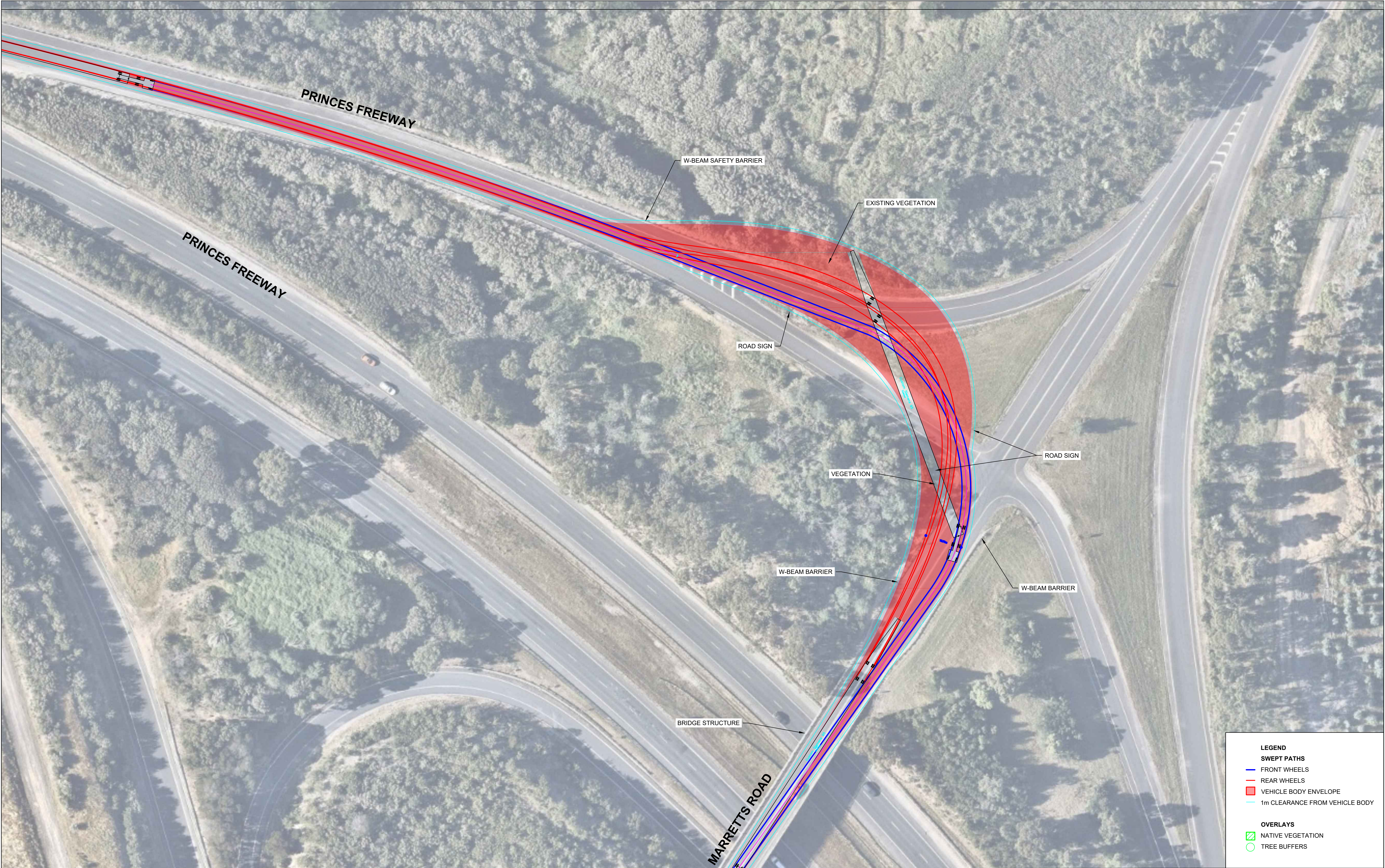


# Appendix C

## OD vehicle swept path analysis





This drawing is confidential and shall only be used for the purpose of this project. The signing of this title block confirms the design and drafting of this project have been prepared and checked in accordance with the AECOM quality assurance system to ISO 9001-2000.

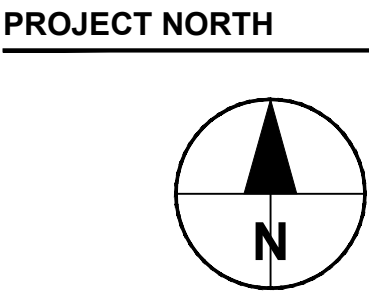
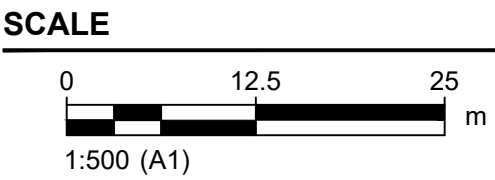
**AECOM**

CONSULTANT  
AECOM Australia Pty Ltd  
A.B.N 20 093 846 925  
www.aecom.com

PROJECT  
DELBURN WIND  
FARM TRAFFIC  
IMPACT  
ASSESSMENT

CLIENT  
DELBURN WIND FARM  
PTY LTD

PROJECT DATA		
DATUM	MGA94 Z55	SURVEY

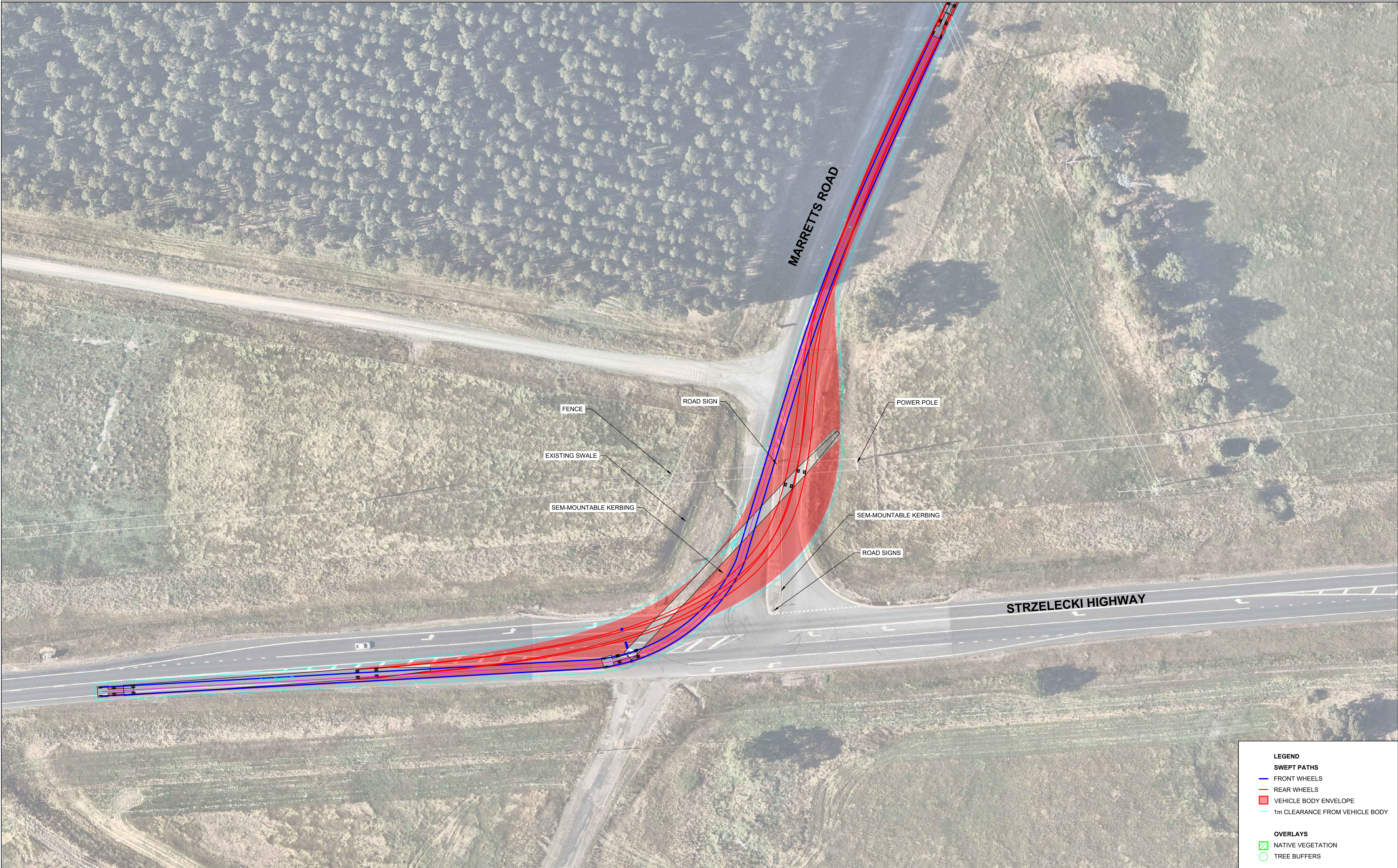


- LEGEND**
- SWEPT PATHS**
- FRONT WHEELS
  - REAR WHEELS
  - VEHICLE BODY ENVELOPE
  - 1m CLEARANCE FROM VEHICLE BODY
- OVERLAYS**
- NATIVE VEGETATION
  - TREE BUFFERS

PROJECT NUMBER  
60629780

SHEET TITLE  
VEHICLE SWEEP PATHS  
PRINCES FREEWAY  
MARRETTS ROAD  
(PF)





This drawing is confidential and shall only be used for the purpose of this project. The signing of this title block confirms the design and drafting of this project have been prepared and checked in accordance with the AECOM quality assurance system to ISO 9001-2000.

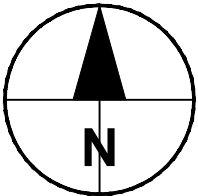
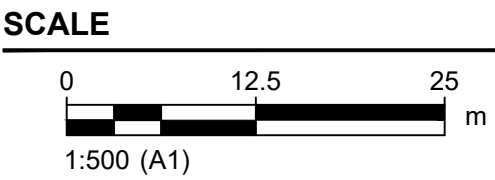
**AECOM**

CONSULTANT  
AECOM Australia Pty Ltd  
A.B.N 20 093 846 925  
www.aecom.com

**PROJECT**  
DELBURN WIND  
FARM TRAFFIC  
IMPACT  
ASSESSMENT

**CLIENT**  
DELBURN WIND FARM  
PTY LTD

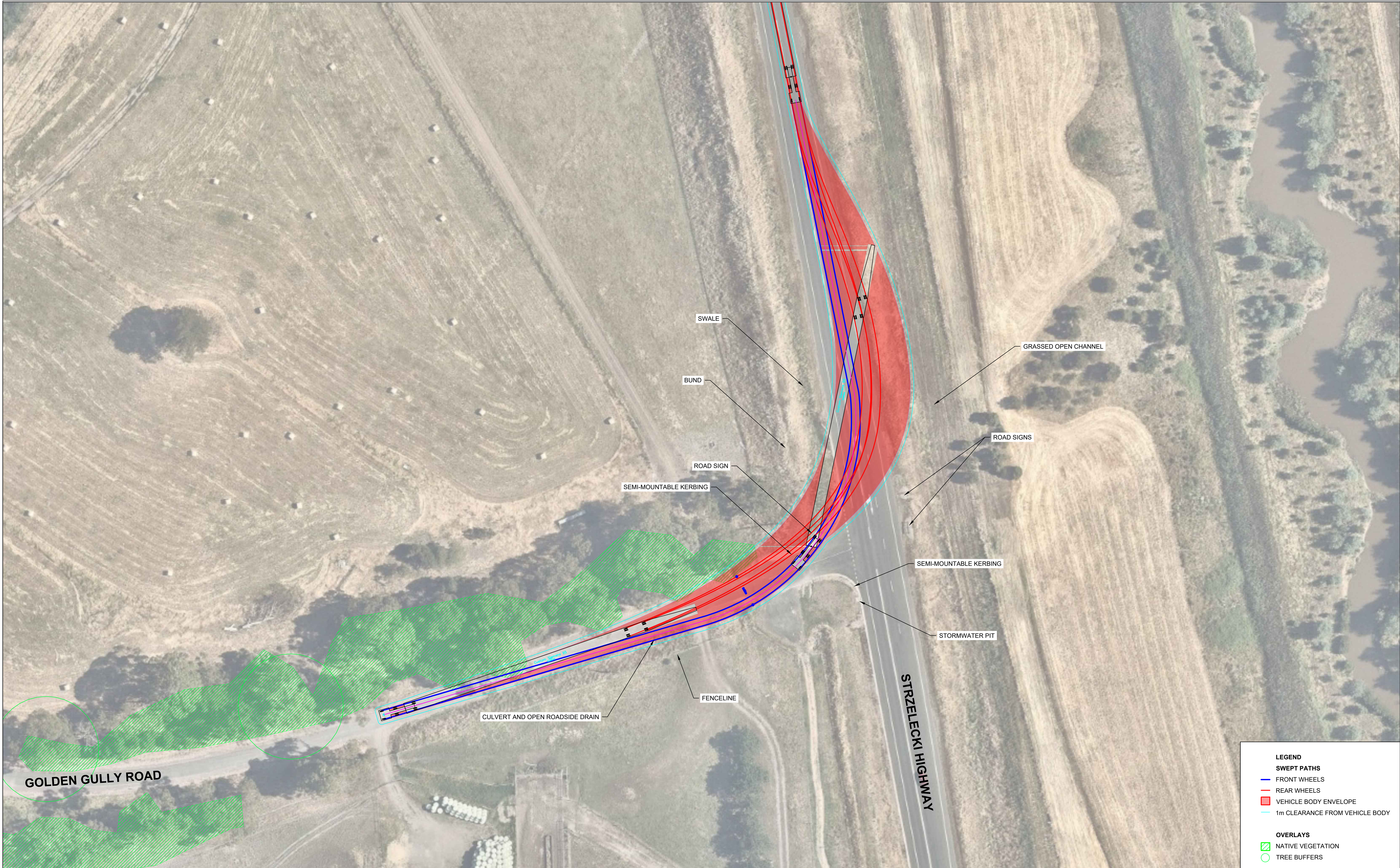
PROJECT DATA		
DATUM	MGA94 Z55	SURVEY



**PROJECT NUMBER**  
60629780

**SHEET TITLE**  
VEHICLE SWEEP PATHS  
MARRETTS ROAD  
STRZELECKI HIGHWAY  
(MR)





This drawing is confidential and shall only be used for the purpose of this project. The signing of this title block confirms the design and drafting of this project have been prepared and checked in accordance with the AECOM quality assurance system to ISO 9001-2000.

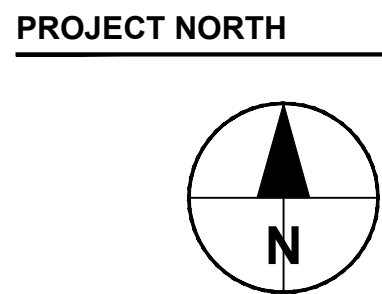
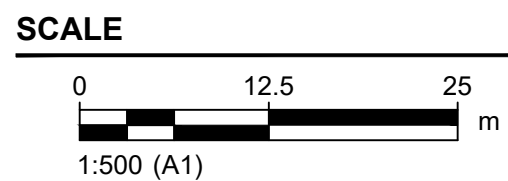
**AECOM**

CONSULTANT  
AECOM Australia Pty Ltd  
A.B.N 20 093 846 925  
www.aecom.com

PROJECT  
DELBURN WIND  
FARM TRAFFIC  
IMPACT  
ASSESSMENT

CLIENT  
DELBURN WIND FARM  
PTY LTD

PROJECT DATA		
DATUM	MGA94 Z55	SURVEY



- LEGEND**
- SWEPT PATHS**
- FRONT WHEELS
  - REAR WHEELS
  - VEHICLE BODY ENVELOPE
  - 1m CLEARANCE FROM VEHICLE BODY
- OVERLAYS**
- NATIVE VEGETATION
  - TREE BUFFERS

PROJECT NUMBER  
60629780

SHEET TITLE  
VEHICLE SWEEP PATHS  
STRZELECKI HIGHWAY  
GOLDEN GULLY ROAD  
(GG)





This drawing is confidential and shall only be used for the purpose of this project. The signing of this title block confirms the design and drafting of this project have been prepared and checked in accordance with the AECOM quality assurance system to ISO 9001-2000.

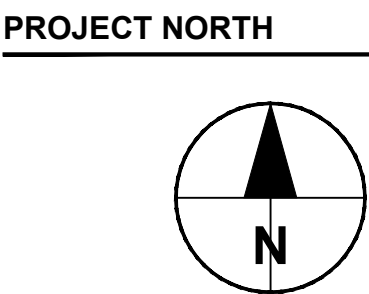
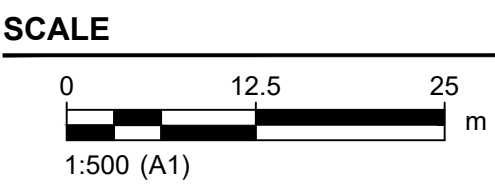
**AECOM**

CONSULTANT  
AECOM Australia Pty Ltd  
A.B.N 20 093 846 925  
www.aecom.com

PROJECT  
**DELBURN WIND  
FARM TRAFFIC  
IMPACT  
ASSESSMENT**

CLIENT  
**DELBURN WIND FARM  
PTY LTD**

PROJECT DATA		
DATUM	MGA94 Z55	SURVEY

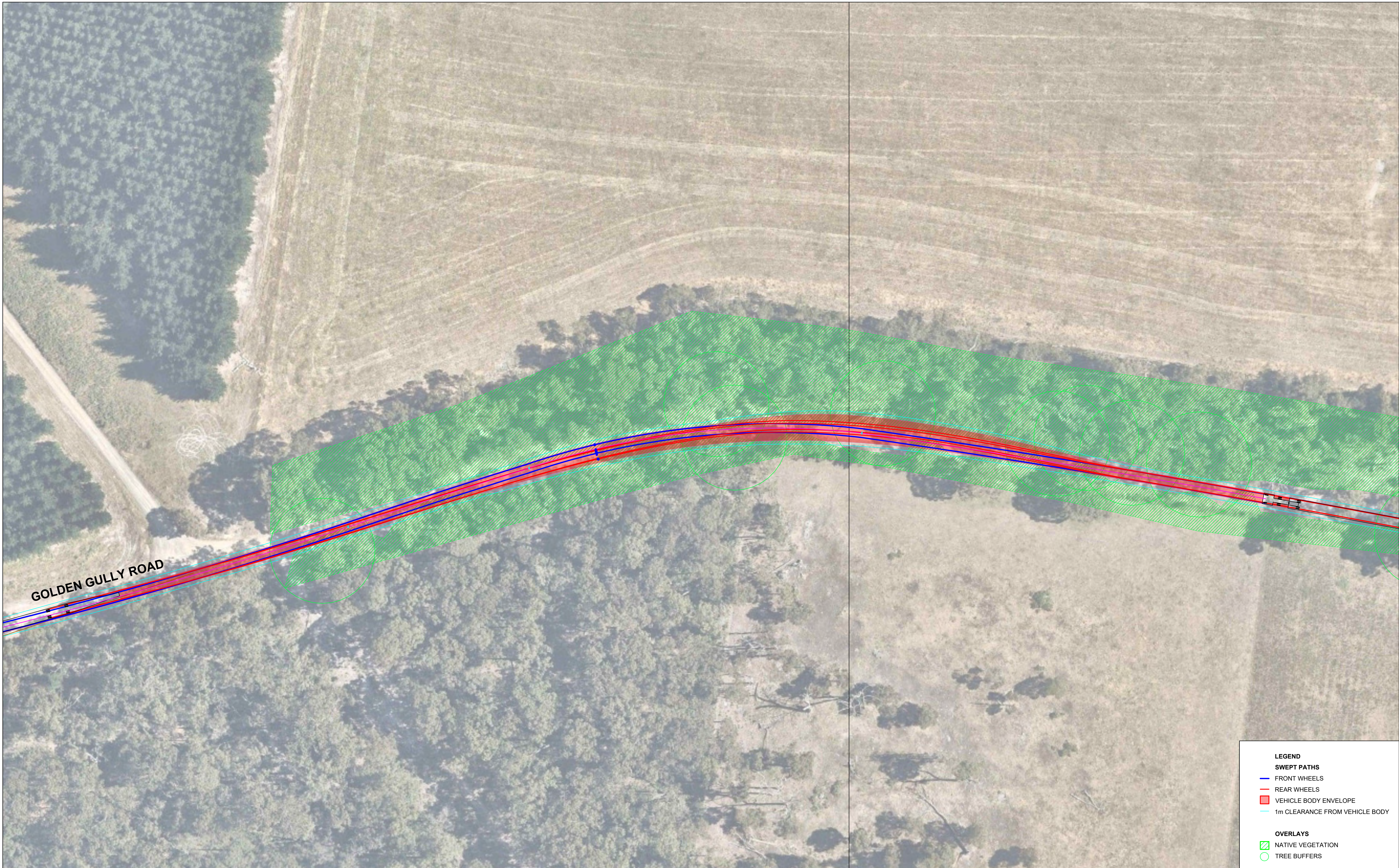


- LEGEND**
- SWEPT PATHS**
- FRONT WHEELS
  - REAR WHEELS
  - VEHICLE BODY ENVELOPE
  - 1m CLEARANCE FROM VEHICLE BODY
- OVERLAYS**
- NATIVE VEGETATION
  - TREE BUFFERS

PROJECT NUMBER  
60629780

SHEET TITLE  
VEHICLE SWEPT PATHS  
GOLDEN GULLY ROAD  
PINCH POINT 1  
(GG1)





This drawing is confidential and shall only be used for the purpose of this project. The signing of this title block confirms the design and drafting of this project have been prepared and checked in accordance with the AECOM quality assurance system to ISO 9001-2000.

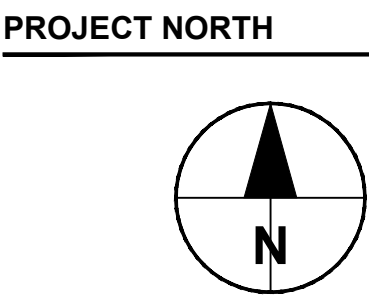
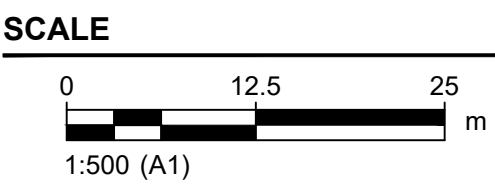
**AECOM**

CONSULTANT  
AECOM Australia Pty Ltd  
A.B.N 20 093 846 925  
www.aecom.com

PROJECT  
DELBURN WIND  
FARM TRAFFIC  
IMPACT  
ASSESSMENT

CLIENT  
DELBURN WIND FARM  
PTY LTD

PROJECT DATA			
DATUM	MGA94 Z55	SURVEY	



- LEGEND**
- SWEPT PATHS**
- FRONT WHEELS
  - REAR WHEELS
  - VEHICLE BODY ENVELOPE
  - 1m CLEARANCE FROM VEHICLE BODY
- OVERLAYS**
- NATIVE VEGETATION
  - TREE BUFFERS

PROJECT NUMBER  
60629780

SHEET TITLE  
VEHICLE SWEEP PATHS  
GOLDEN GULLY ROAD  
PINCH POINT 2  
(GG2)





This drawing is confidential and shall only be used for the purpose of this project. The signing of this title block confirms the design and drafting of this project have been prepared and checked in accordance with the AECOM quality assurance system to ISO 9001-2000.

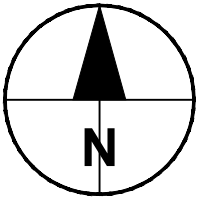
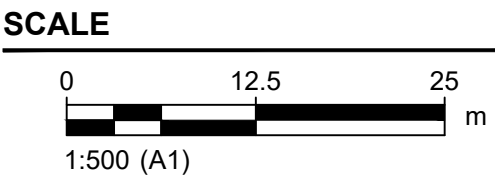
**AECOM**

CONSULTANT  
AECOM Australia Pty Ltd  
A.B.N 20 093 846 925  
www.aecom.com

**PROJECT**  
DELBURN WIND  
FARM TRAFFIC  
IMPACT  
ASSESSMENT

**CLIENT**  
DELBURN WIND FARM  
PTY LTD

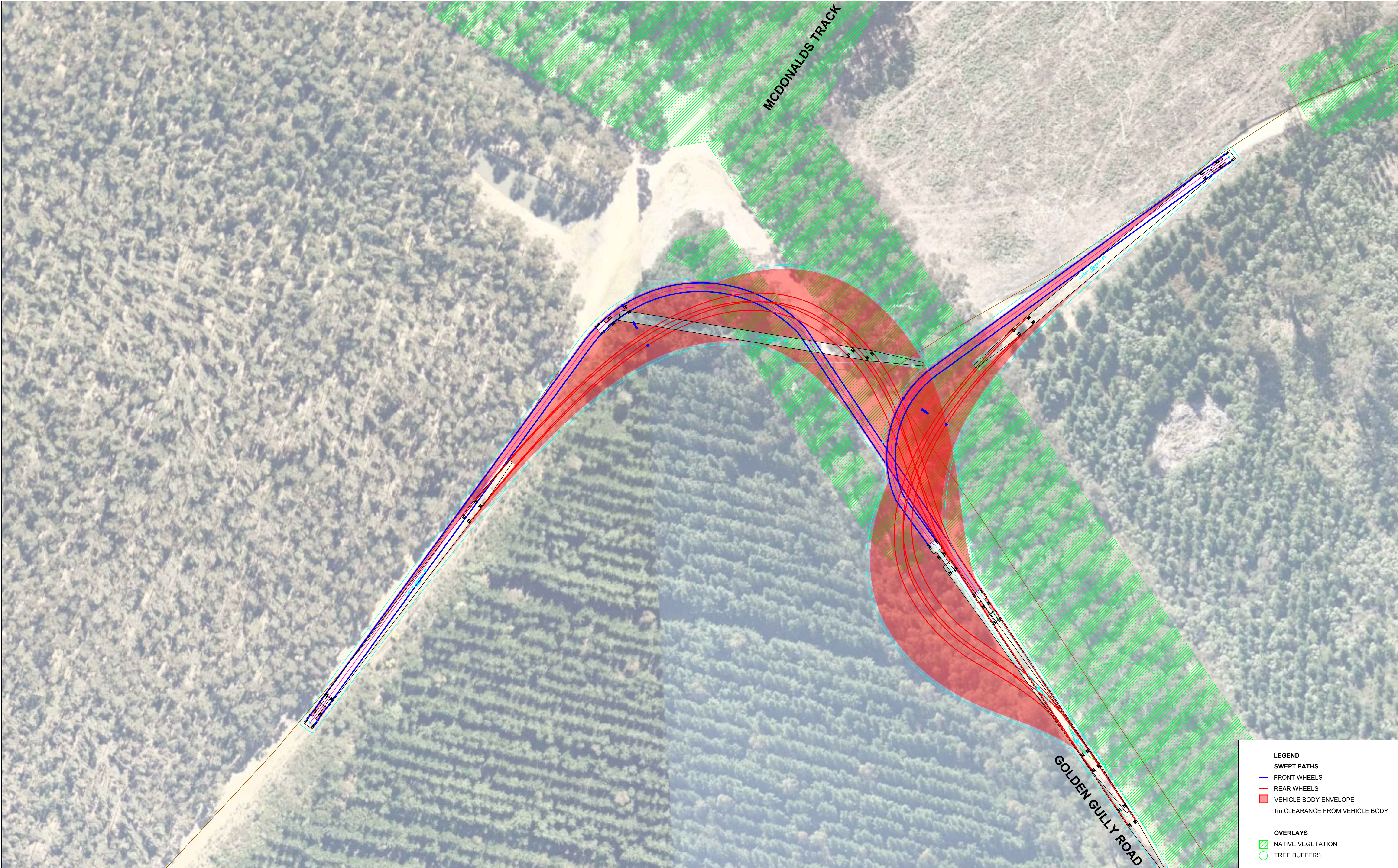
PROJECT DATA		
DATUM	MGA94 Z55	SURVEY



**PROJECT NUMBER**  
60629780

**SHEET TITLE**  
VEHICLE SWEPT PATHS  
GOLDEN GULLY ROAD  
PINCH POINT 3  
(GG3)





This drawing is confidential and shall only be used for the purpose of this project. The signing of this title block confirms the design and drafting of this project have been prepared and checked in accordance with the AECOM quality assurance system to ISO 9001-2000.

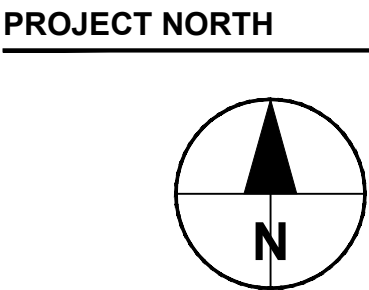
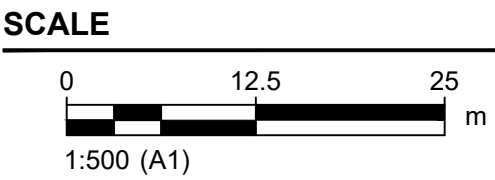
**AECOM**

CONSULTANT  
AECOM Australia Pty Ltd  
A.B.N 20 093 846 925  
www.aecom.com

PROJECT  
DELBURN WIND  
FARM TRAFFIC  
IMPACT  
ASSESSMENT

CLIENT  
DELBURN WIND FARM  
PTY LTD

PROJECT DATA		
DATUM	MGA94 Z55	SURVEY

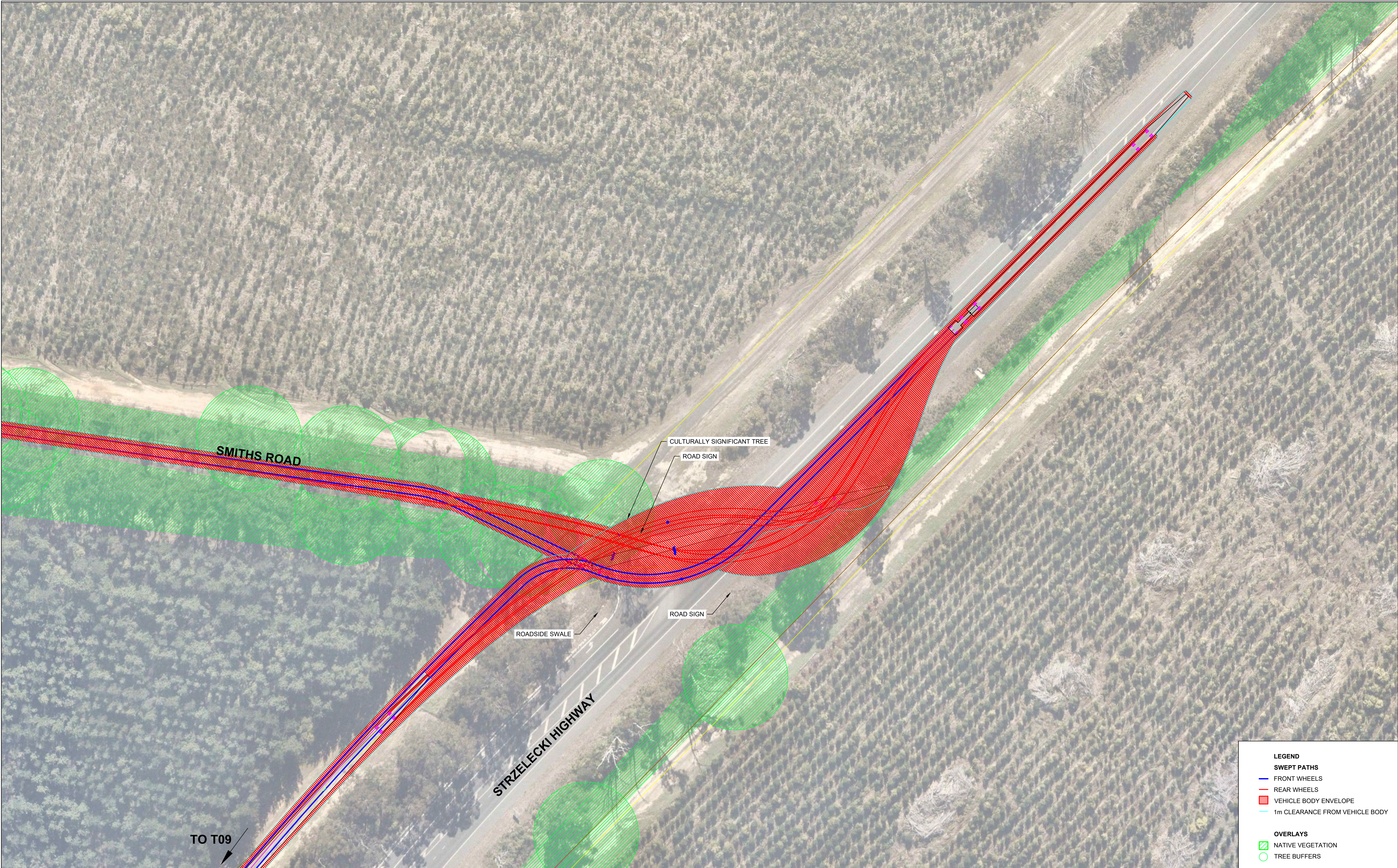


- LEGEND**
- SWEPT PATHS**
- FRONT WHEELS
  - REAR WHEELS
  - VEHICLE BODY ENVELOPE
  - 1m CLEARANCE FROM VEHICLE BODY
- OVERLAYS**
- NATIVE VEGETATION
  - TREE BUFFERS

PROJECT NUMBER  
60629780

SHEET TITLE  
VEHICLE SWEEP PATHS  
GOLDEN GULLY ROAD -  
MCDONALDS TRACK  
INTERSECTION  
(GG4)





This drawing is confidential and shall only be used for the purpose of this project. The signing of this title block confirms the design and drafting of this project have been prepared and checked in accordance with the AECOM quality assurance system to ISO 9001-2000.

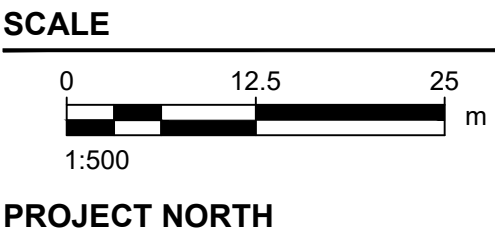
**AECOM**

CONSULTANT  
AECOM Australia Pty Ltd  
A.B.N 20 093 846 925  
www.aecom.com

PROJECT  
DELBURN WIND  
FARM TIA

CLIENT  
DELBURN WIND  
FARM PTY LTD

PROJECT DATA		
DATUM		SURVEY



PROJECT NUMBER  
60629780

SHEET TITLE  
VEHICLE SWEPT PATHS  
STRZELECKI HIGHWAY  
SMITHS ROAD  
(SR)





This drawing is confidential and shall only be used for the purpose of this project. The signing of this title block confirms the design and drafting of this project have been prepared and checked in accordance with the AECOM quality assurance system to ISO 9001-2000.

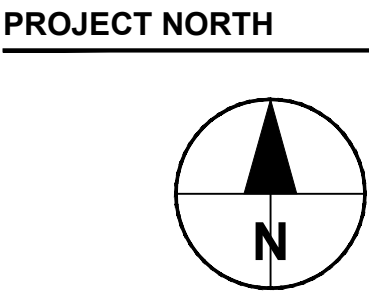
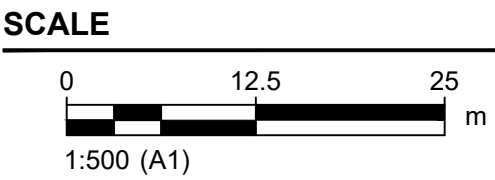
**AECOM**

CONSULTANT  
AECOM Australia Pty Ltd  
A.B.N 20 093 846 925  
www.aecom.com

PROJECT  
DELBURN WIND  
FARM TRAFFIC  
IMPACT  
ASSESSMENT

CLIENT  
DELBURN WIND FARM  
PTY LTD

PROJECT DATA		
DATUM	MGA94 Z55	SURVEY



- LEGEND**
- SWEPT PATHS**
- FRONT WHEELS
  - REAR WHEELS
  - VEHICLE BODY ENVELOPE
  - 1m CLEARANCE FROM VEHICLE BODY
- OVERLAYS**
- NATIVE VEGETATION
  - TREE BUFFERS

PROJECT NUMBER  
60629780

SHEET TITLE  
VEHICLE SWEPT PATHS  
SMITHS ROAD TO T12  
INTERSECTION  
(SR2)





This drawing is confidential and shall only be used for the purpose of this project. The signing of this title block confirms the design and drafting of this project have been prepared and checked in accordance with the AECOM quality assurance system to ISO 9001-2000.

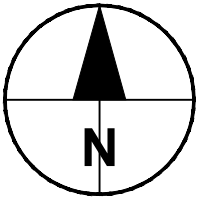
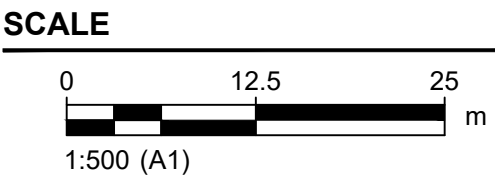
**AECOM**

CONSULTANT  
AECOM Australia Pty Ltd  
A.B.N 20 093 846 925  
www.aecom.com

**PROJECT**  
DELBURN WIND  
FARM TRAFFIC  
IMPACT  
ASSESSMENT

**CLIENT**  
DELBURN WIND FARM  
PTY LTD

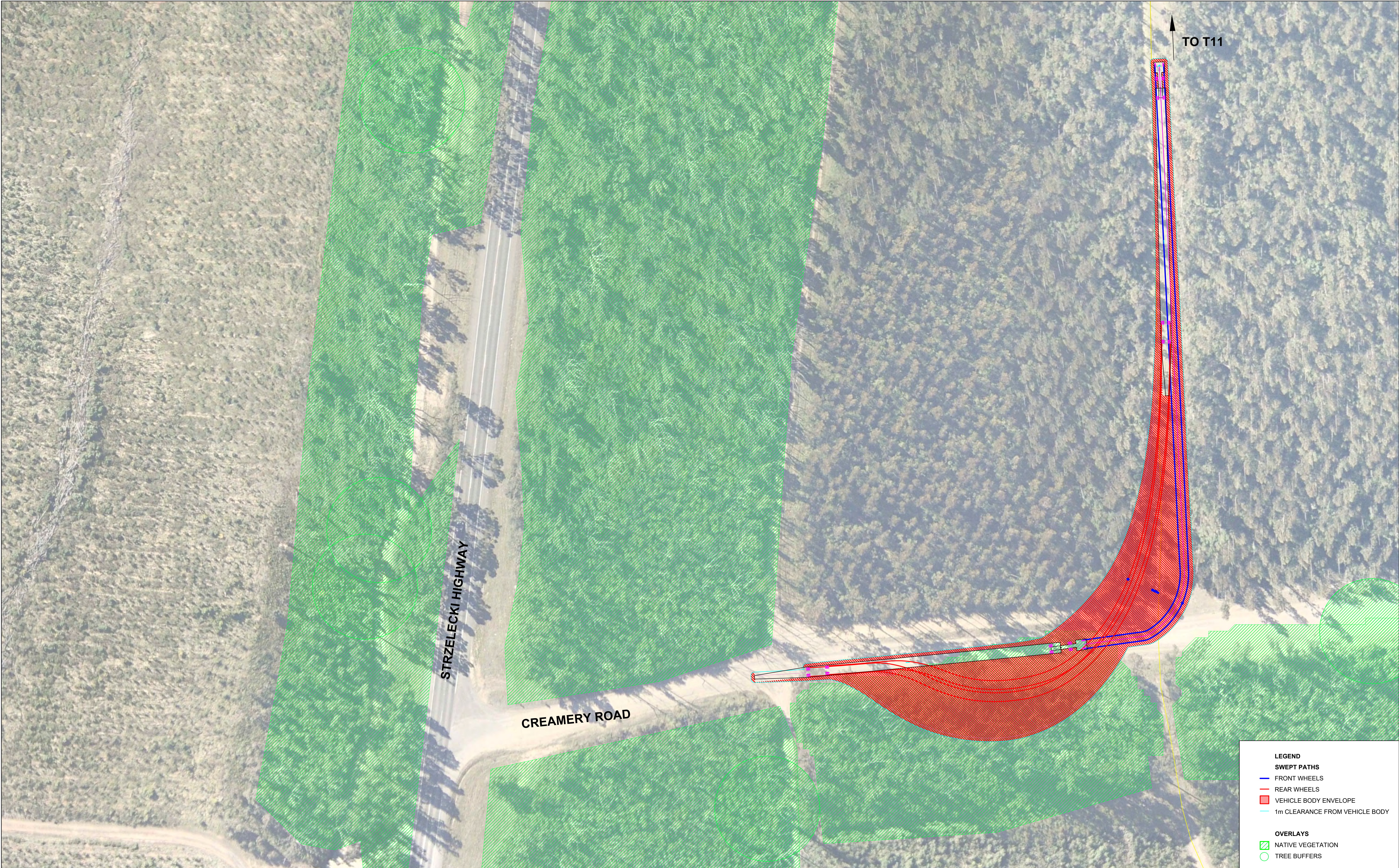
PROJECT DATA		
DATUM	MGA94 Z55	SURVEY



**PROJECT NUMBER**  
60629780

**SHEET TITLE**  
VEHICLE SWEEP PATHS  
STRZELECKI HIGHWAY  
CREAMERY ROAD  
(CR)





This drawing is confidential and shall only be used for the purpose of this project. The signing of this title block confirms the design and drafting of this project have been prepared and checked in accordance with the AECOM quality assurance system to ISO 9001-2000.

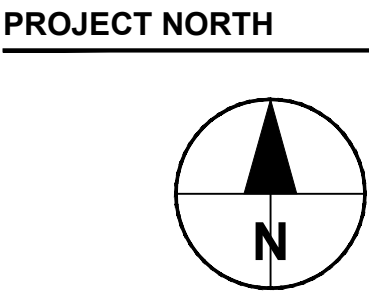
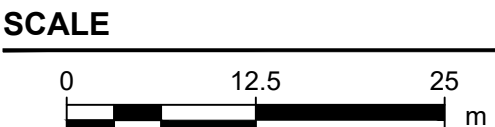
**AECOM**

CONSULTANT  
AECOM Australia Pty Ltd  
A.B.N 20 093 846 925  
www.aecom.com

PROJECT  
DELBURN WIND  
FARM TIA

CLIENT  
DELBURN WIND  
FARM PTY LTD

PROJECT DATA		
DATUM		SURVEY

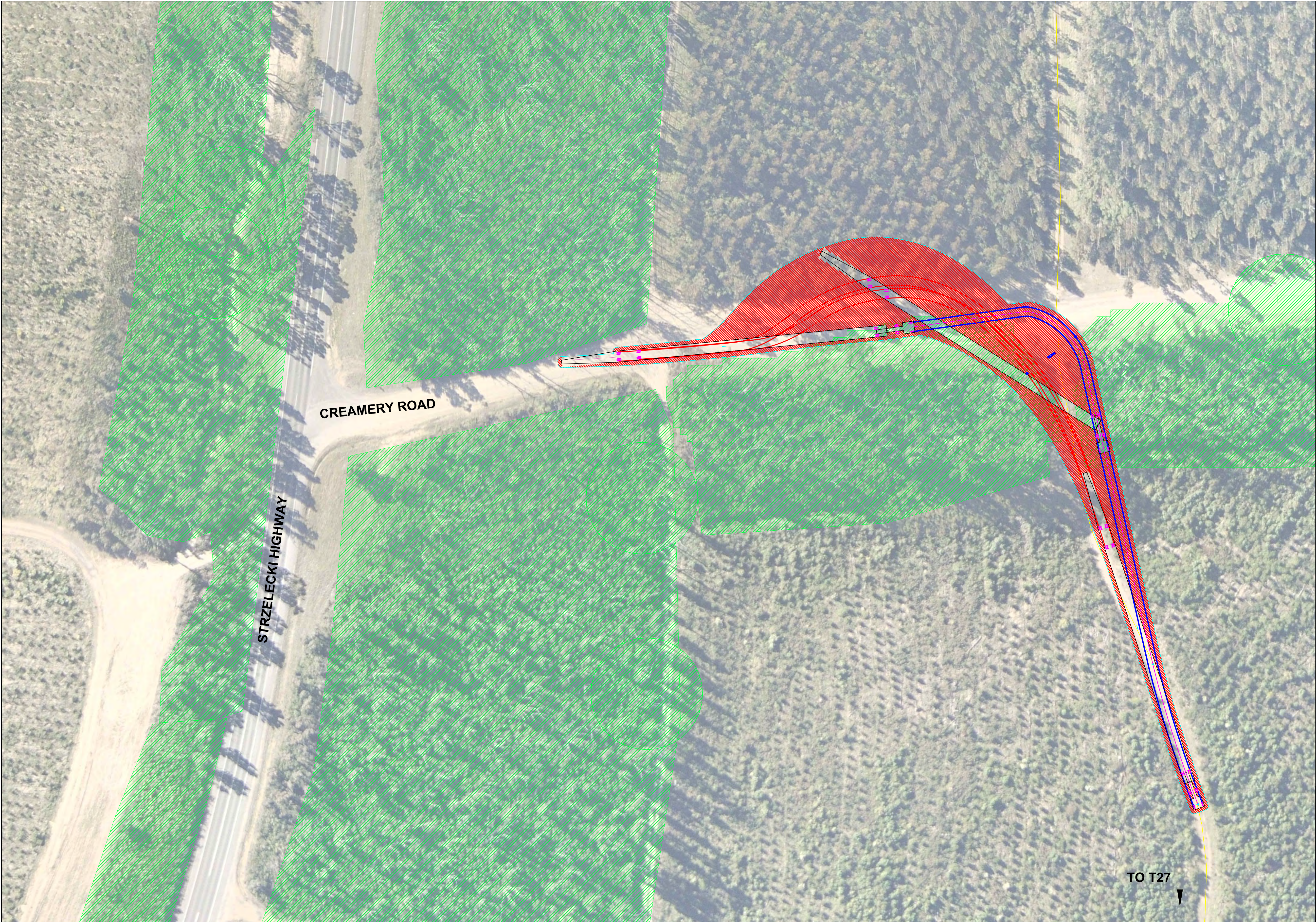


- LEGEND**
- SWEPT PATHS**
- FRONT WHEELS
  - REAR WHEELS
  - VEHICLE BODY ENVELOPE
  - 1m CLEARANCE FROM VEHICLE BODY
- OVERLAYS**
- NATIVE VEGETATION
  - TREE BUFFERS

PROJECT NUMBER

SHEET TITLE  
VEHICLE SWEPT PATHS  
STRZELECKI HIGHWAY  
CREAMERY ROAD T11  
(CR-T11)





This drawing is confidential and shall only be used for the purpose of this project. The signing of this title block confirms the design and drafting of this project have been prepared and checked in accordance with the AECOM quality assurance system to ISO 9001-2000.

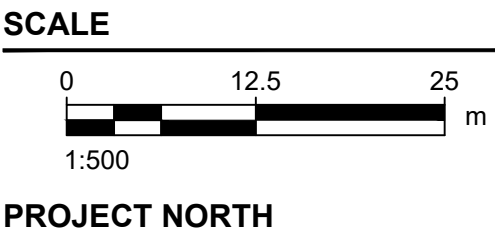
**AECOM**

CONSULTANT  
AECOM Australia Pty Ltd  
A.B.N 20 093 846 925  
www.aecom.com

PROJECT  
DELBURN WIND  
FARM TIA

CLIENT  
DELBURN WIND  
FARM PTY LTD

PROJECT DATA		
DATUM		SURVEY



- LEGEND**
- SWEPT PATHS**
- FRONT WHEELS
  - REAR WHEELS
  - VEHICLE BODY ENVELOPE
  - 1m CLEARANCE FROM VEHICLE BODY
- OVERLAYS**
- NATIVE VEGETATION
  - TREE BUFFERS

PROJECT NUMBER

SHEET TITLE  
VEHICLE SWEPT PATHS  
STRZELECKI HIGHWAY  
CREAMERY ROAD T27  
(CR-T27)