

Legend

Study Area

Wind turbines (v3.5)

Impact footprint (v3.5)

Possible HDD Areas to further avoid impacts

Native vegetation identified by HVP

Scattered Large Tree

Scattered Small Tree

Large Tree within a patch

Tree - Direct impact

Tree - Indirect impact

Ecological Vegetation Classes

Herb-rich Foothill Forest (EVC 23)

Swampy Woodland (EVC 937)

Vegetation - Direct impact

Vegetation - Indirect impact

Vegetation avoided due to possible HDD Area

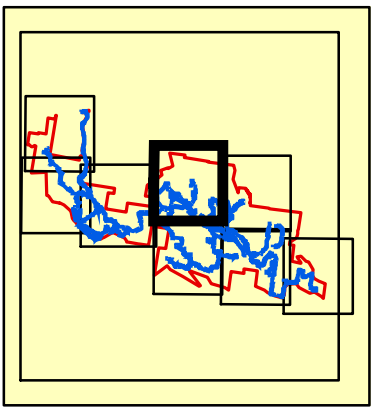
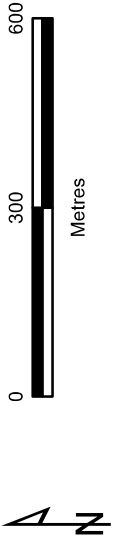


Figure 3e
Ecological features and possible Horizontal Directional Drilling (HDD) Areas
Biodiversity Assessment for the Delburn Wind Farm



VicMap Data. The State of Victoria does not warrant the accuracy or completeness of information in this publication and any person using or relying upon such information does so on the basis that the State of Victoria shall bear no responsibility or liability whatsoever for any errors, faults, defects or omissions in the information.



Legend

Study Area

Wind turbines (v3.5)

Impact footprint (v3.5)

Possible HDD Areas to further avoid impacts

Native vegetation identified by HVP

Current Wetlands

Scattered Large Tree

Scattered Small Tree

Large Tree within a patch

Tree - Direct impact

Tree - Indirect impact

Ecological Vegetation Classes

Damp Forest (EVC 29)

Herb-rich Foothill Forest (EVC 23)

Lowland Forest (EVC 16)

Swampy Woodland (EVC 937)

Tall Marsh (EVC 821)

Vegetation - Direct impact

Vegetation - Indirect impact

Vegetation avoided due to possible HDD Area

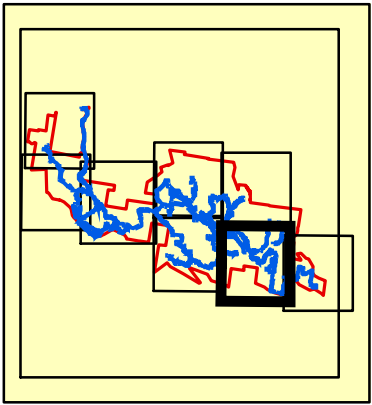
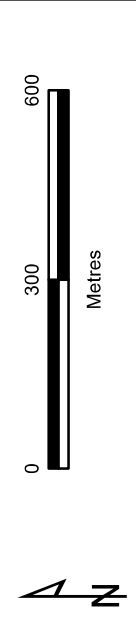
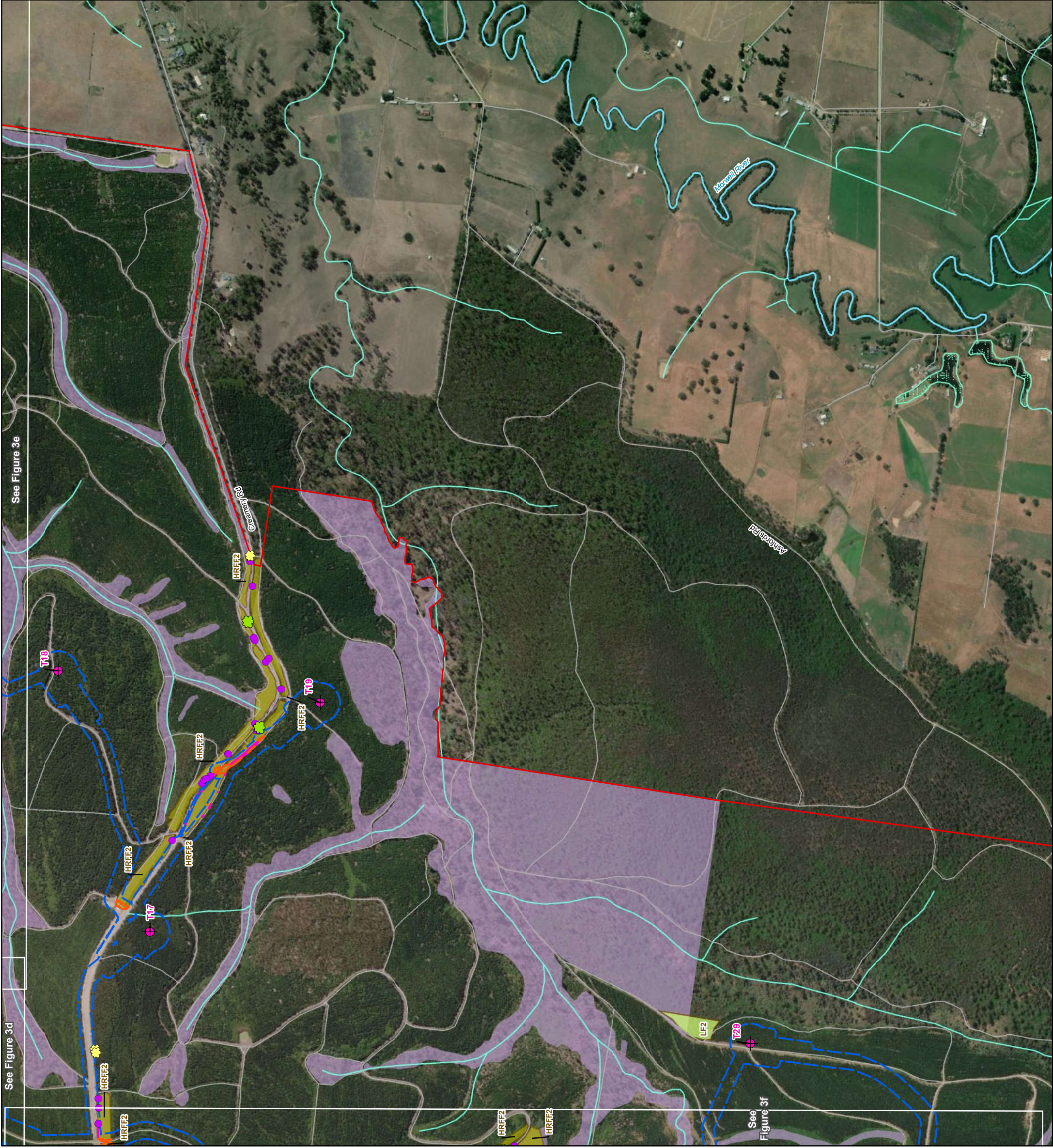


Figure 3f
Ecological features and possible Horizontal Directional Drilling (HDD) Areas
Biodiversity Assessment for the Delburn Wind Farm



VicMap Data: The State of Victoria does not warrant the accuracy or completeness of information in this publication and any person using or relying upon such information does so on the basis that the State of Victoria shall bear no responsibility or liability whatsoever for any errors, faults, defects or omissions in the information.

10745_Fig03_EcoFeat_wHDD_MB_A3 3/12/2020 malsey



Legend

- Study Area
- Wind turbines (v3.5)
- Impact footprint (v3.5)
- Native vegetation identified by HVP
- Current Wetlands
- Scattered Large Tree
- Scattered Small Tree
- Large Tree within a patch
- Ecological Vegetation Classes**
- Herb-rich Foothill Forest (EVC 23)
- Lowland Forest (EVC 16)
- Vegetation - Direct impact
- Vegetation - Indirect impact

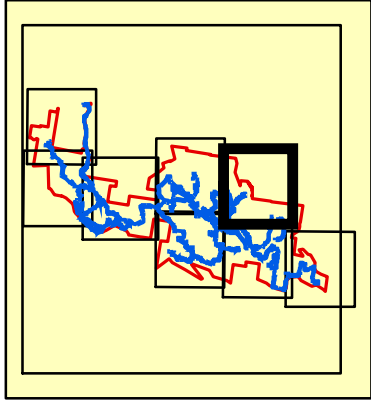
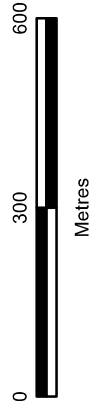
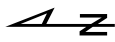
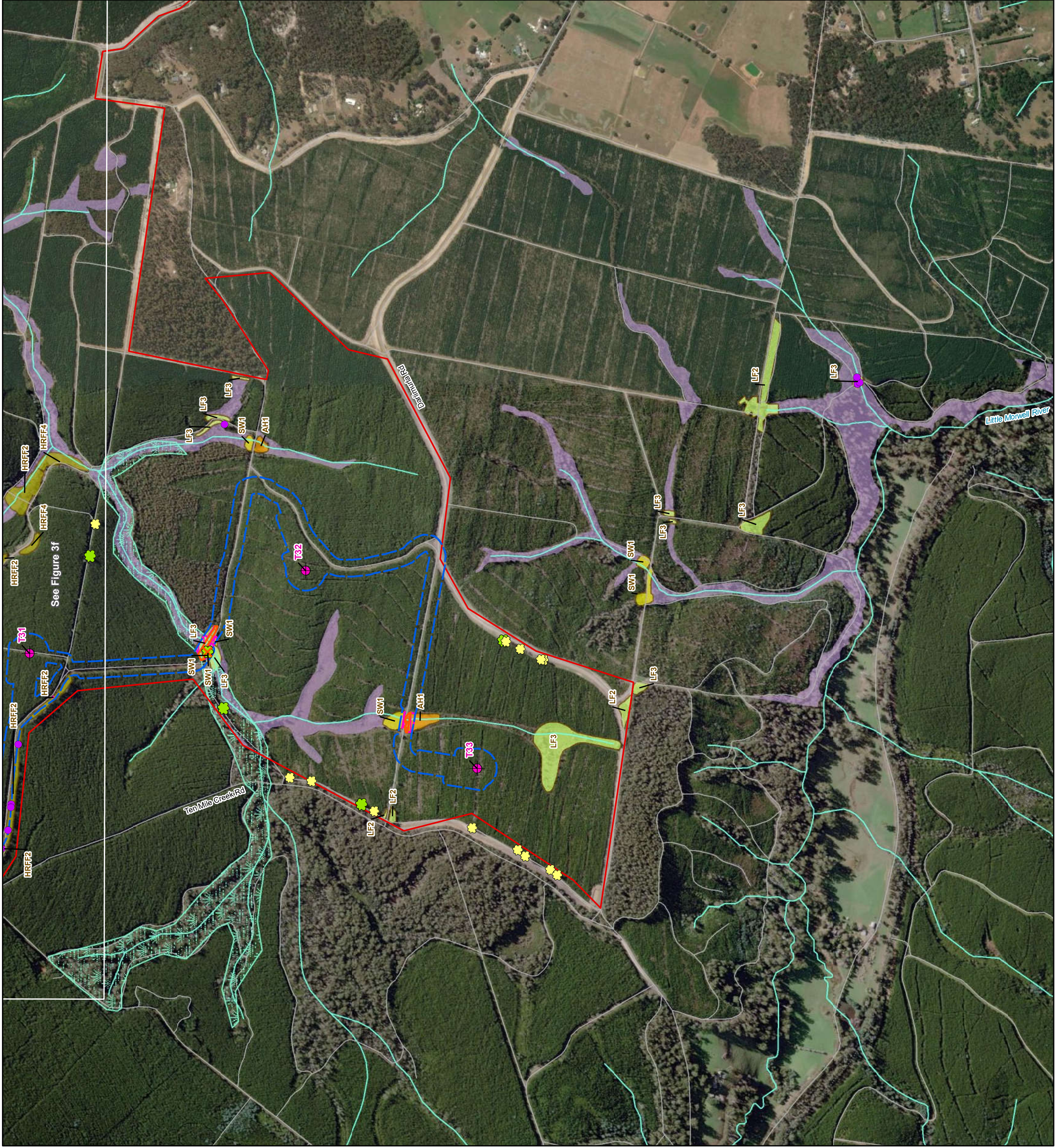


Figure 3g
Ecological features and possible
Horizontal Directional Drilling (HDD)
Areas
Biodiversity Assessment for the Delburn
Wind Farm





- Legend**
- Study Area
 - Wind turbines (v3.5)
 - Impact footprint (v3.5)
 - Native vegetation identified by HVP
 - Current Wetlands
 - Scattered Large Tree
 - Scattered Small Tree
 - Large Tree within a patch
 - Tree - Direct impact
 - Tree - Indirect impact
- Ecological Vegetation Classes**
- Aquatic Hermland (EVC 653)
 - Herb-rich Foothill Forest (EVC 23)
 - Lowland Forest (EVC 16)
 - Swampy Woodland (EVC 937)
 - Vegetation - Direct impact
 - Vegetation - Indirect impact

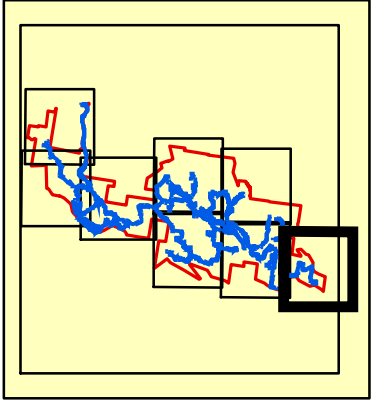


Figure 3h
Ecological features and possible Horizontal Directional Drilling (HDD) Areas
Biodiversity Assessment for the Delburn Wind Farm

