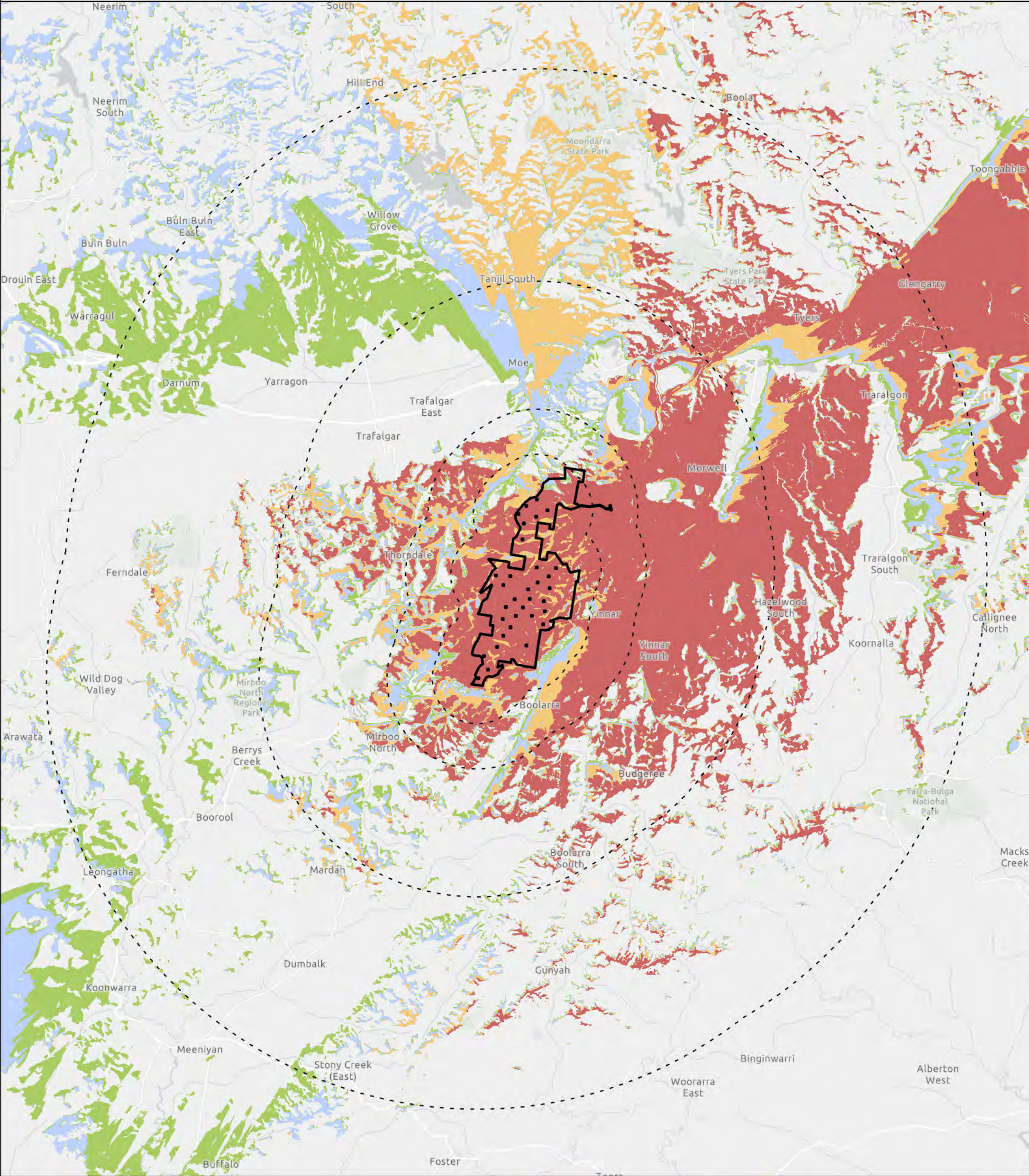


## **Appendix A. Seen Area Analysis**





**Legend**

- Wind turbine location
- - - ZVI
- ▭ Site extent

**Wind Turbine Visibility**

- Zone A (one or more entire wind turbine visible)
- Zone B (entire rotor swept path of one or more wind turbine visible)
- Zone C (at least half of the rotor swept path of one or more wind turbine visible)
- Zone D (any part of one or more wind turbine is visible)



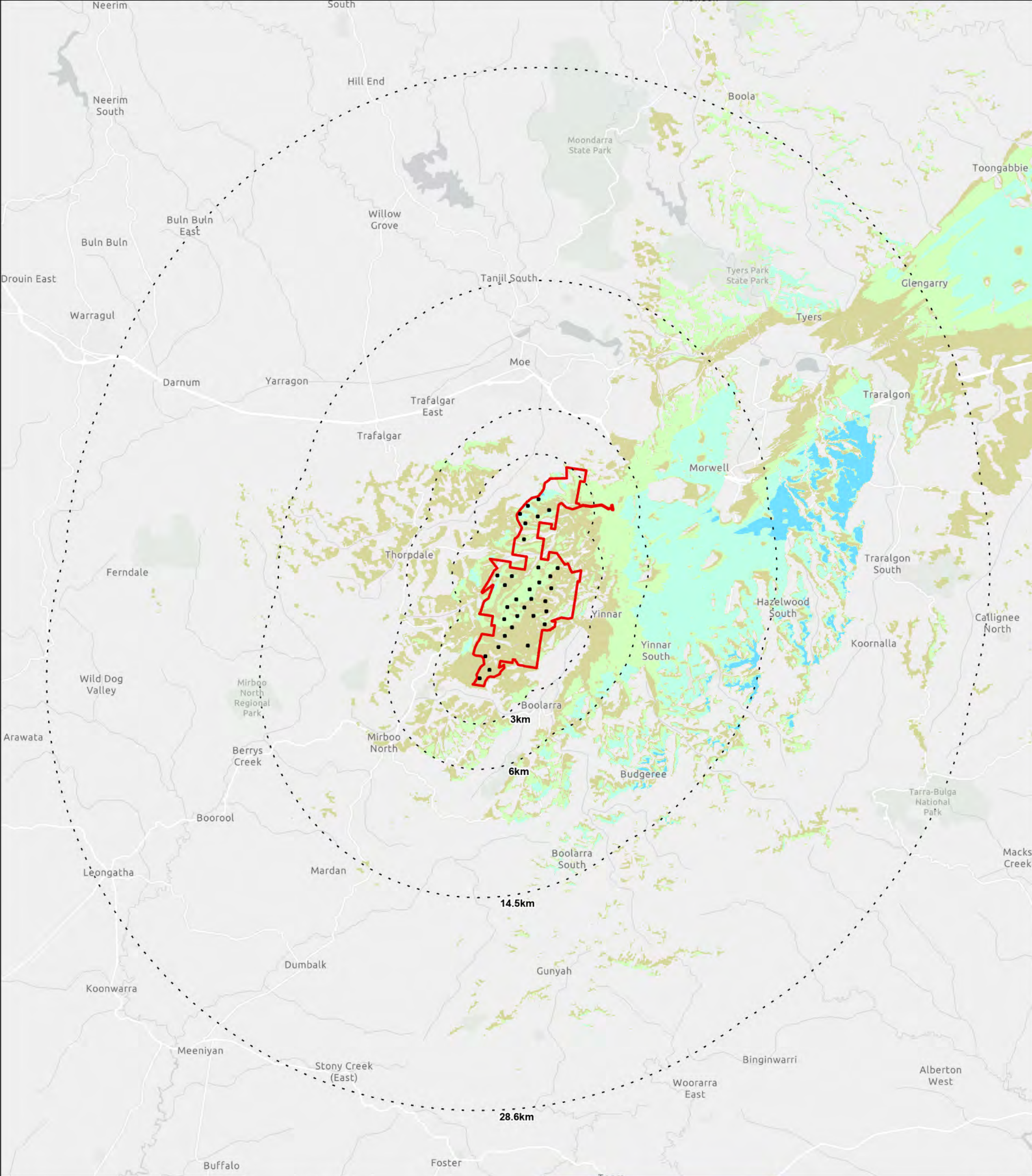
IS279700  
Turbine Layout Version 3.5  
GDA 1994 MGA Zone 55

0 5 10  
Kilometres

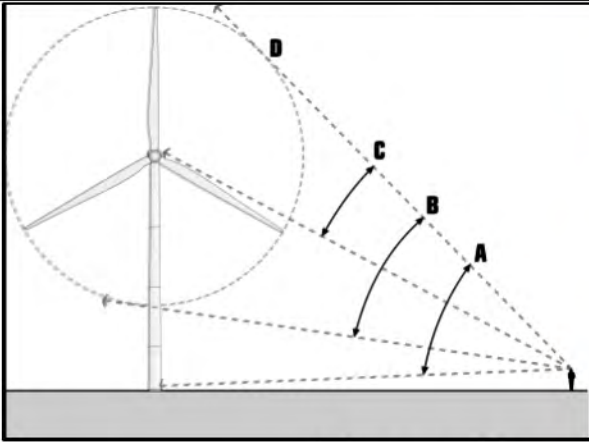
**DATA SOURCES**  
© Commonwealth of Australia (Geoscience Australia)  
Geodata Topo 250k Series 3; Vicmap Data © State of Victoria; Jacobs.

**COPYRIGHT:** The concepts and information contained in this document are the copyright of Jacobs. Use or copying of the document in whole or in part without the written permission of Jacobs constitutes an infringement of copyright. Jacobs does not warrant that this document is definitive nor free of error and does not accept liability for any loss caused or arising from reliance upon information provided herein.





- Wind turbine location
  - ZVI
  - Site extent
- Turbine Visibility**
- Number of visible turbines
- ≤ 0 (no colour)
  - ≤ 8
  - ≤ 16
  - ≤ 24
  - ≤ 33



Jacobs



IS279700

Turbine Layout Version 3.5

GDA 1994 MGA Zone 55

0 5 10

Kilometres

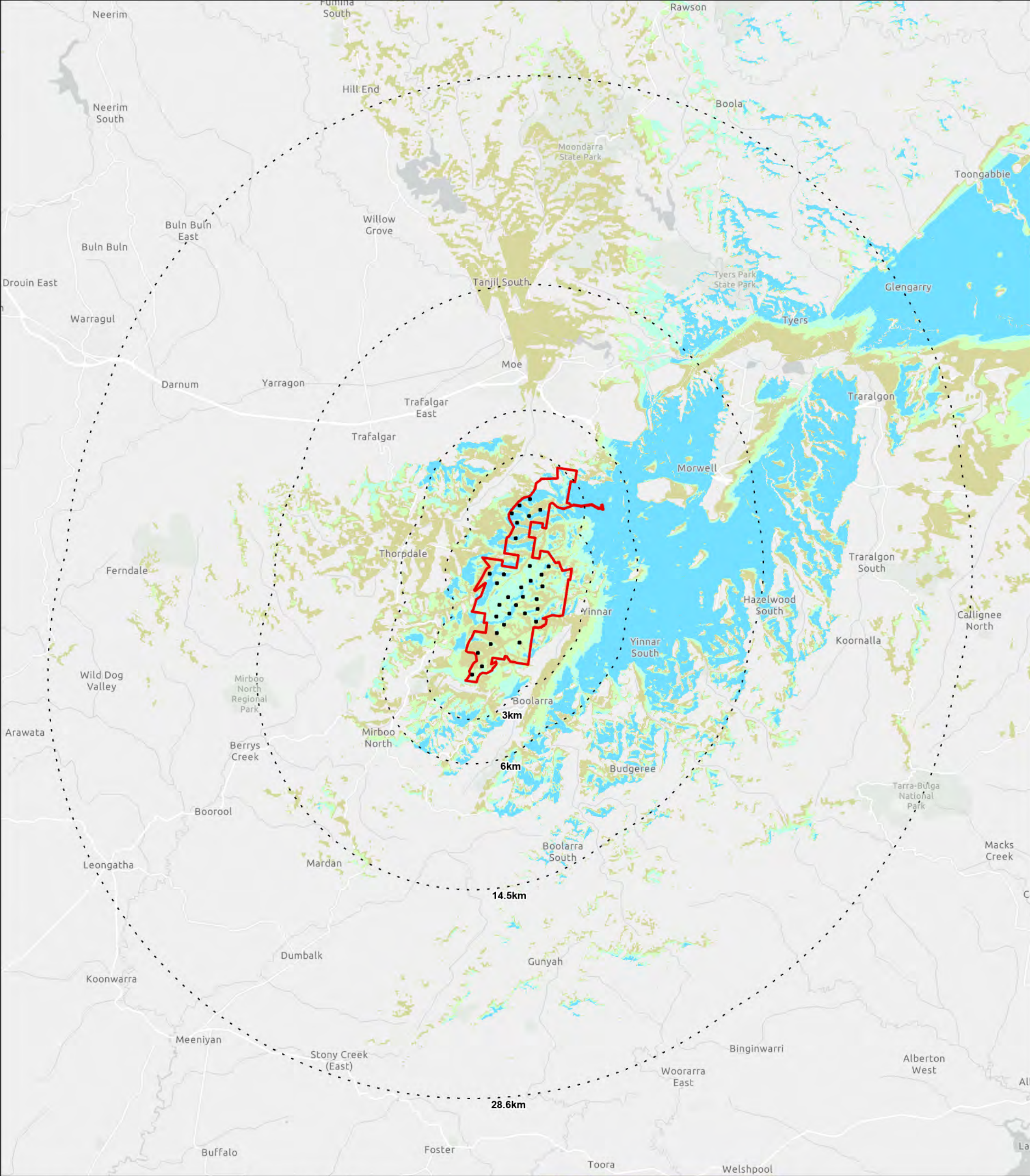
DATA SOURCES

© Commonwealth of Australia (Geoscience Australia)

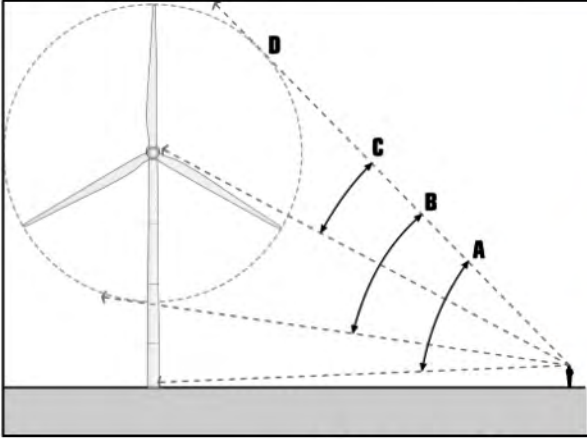
Geodata Topo 250k Series 3; Vicmap Data © State of Victoria; Jacobs.

COPYRIGHT: The concepts and information contained in this document are the copyright of Jacobs. Use or copying of the document in whole or in part without the written permission of Jacobs constitutes an infringement of copyright. Jacobs does not warrant that this document is definitive nor free of error and does not accept liability for any loss caused or arising from reliance upon information provided herein.





- Wind turbine location
  - ZVI
  - ▭ Site extent
- Turbine Visibility**
- Number of visible turbines
- ≤ 0 (no colour)
  - ≤ 8
  - ≤ 16
  - ≤ 24
  - ≤ 33



Jacobs



IS279700

Turbine Layout Version 3.5

GDA 1994 MGA Zone 55

0 5 10

Kilometres

N

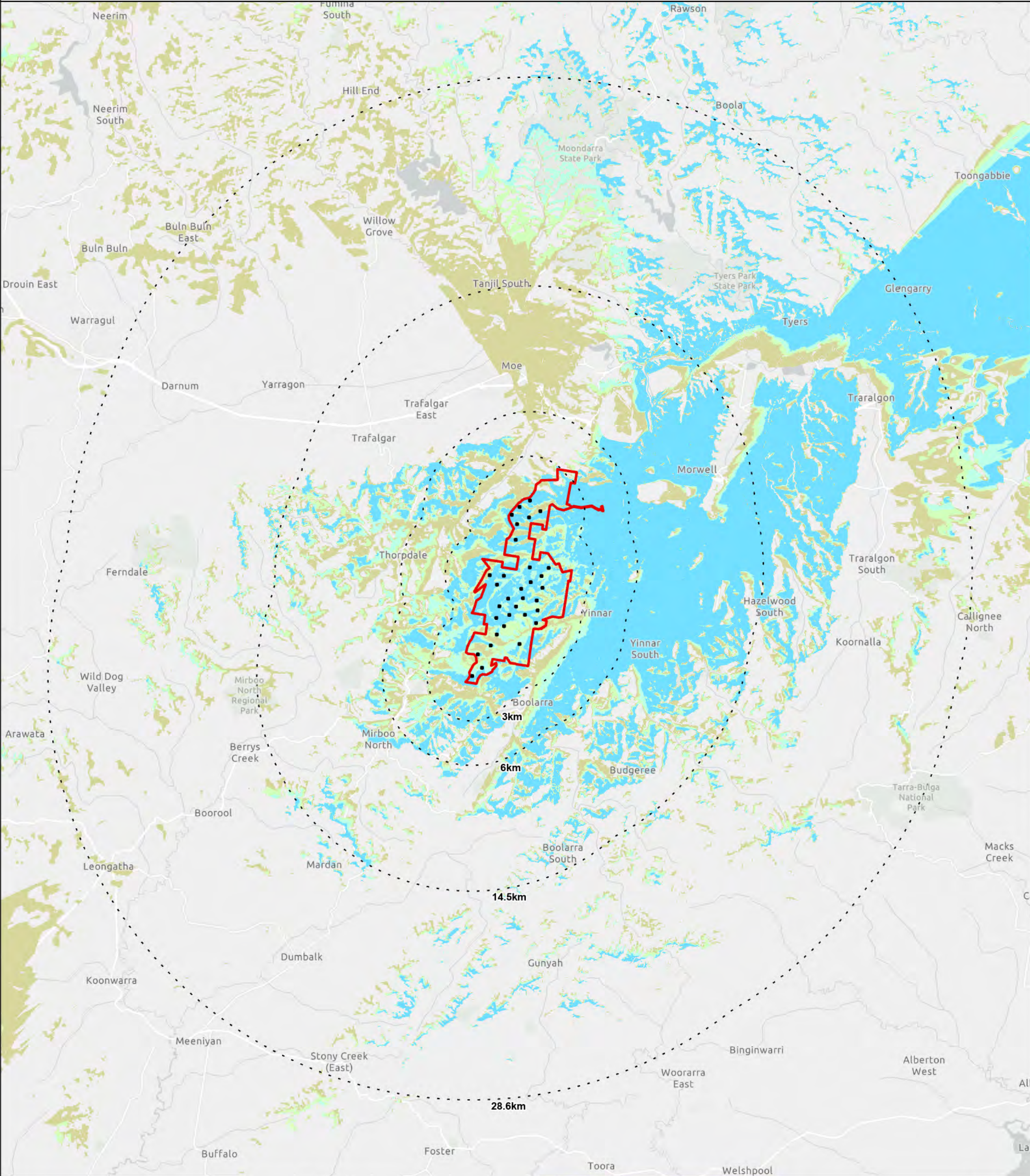
DATA SOURCES

© Commonwealth of Australia (Geoscience Australia)

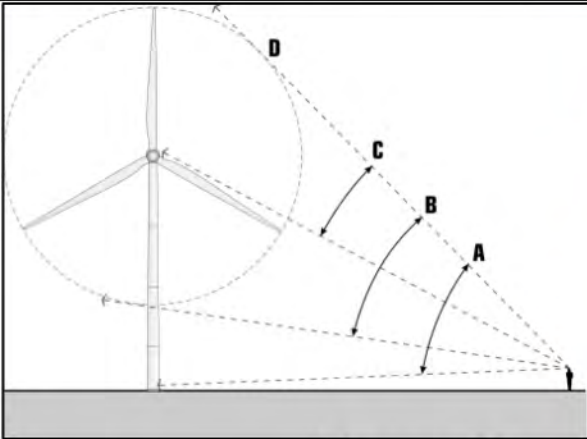
Geodata Topo 250k Series 3; Vicmap Data © State of Victoria; Jacobs.

COPYRIGHT: The concepts and information contained in this document are the copyright of Jacobs. Use or copying of the document in whole or in part without the written permission of Jacobs constitutes an infringement of copyright. Jacobs does not warrant that this document is definitive nor free of error and does not accept liability for any loss caused or arising from reliance upon information provided herein.





- Wind turbine location
  - ZVI
  - Site extent
- Turbine Visibility**
- Number of visible turbines
- ≤ 0 (no colour)
  - ≤ 8
  - ≤ 16
  - ≤ 24
  - ≤ 33



Jacobs



IS279700

Turbine Layout Version 3.5

GDA 1994 MGA Zone 55

0 5 10

Kilometres

N

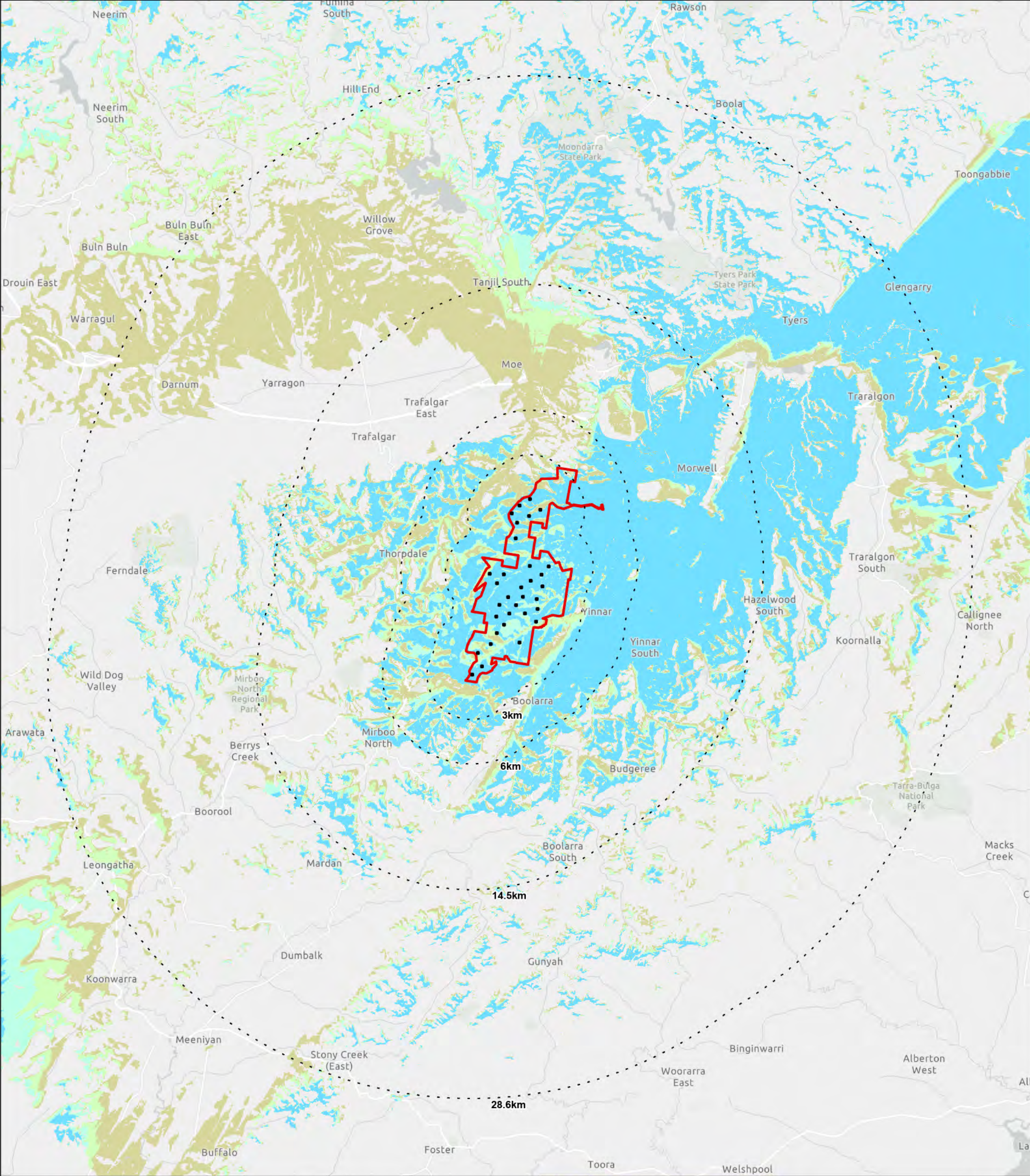
DATA SOURCES

© Commonwealth of Australia (Geoscience Australia)

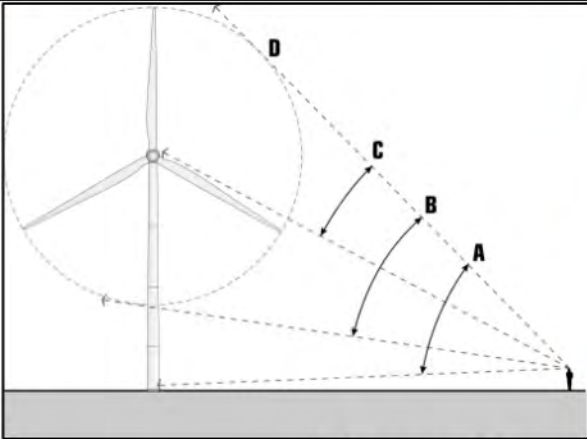
Geodata Topo 250k Series 3; Vicmap Data © State of Victoria; Jacobs.

COPYRIGHT: The concepts and information contained in this document are the copyright of Jacobs. Use or copying of the document in whole or in part without the written permission of Jacobs constitutes an infringement of copyright. Jacobs does not warrant that this document is definitive nor free of error and does not accept liability for any loss caused or arising from reliance upon information provided herein.

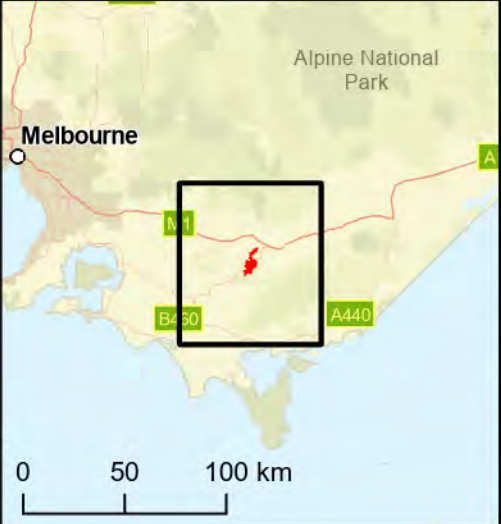




- Wind turbine location
  - ZVI
  - ▭ Site extent
- Turbine Visibility**
- Number of visible turbines
- ≤ 0 (no colour)
  - ≤ 8
  - ≤ 16
  - ≤ 24
  - ≤ 33



Jacobs



IS279700

Turbine Layout Version 3.5

GDA 1994 MGA Zone 55

0 5 10

Kilometres

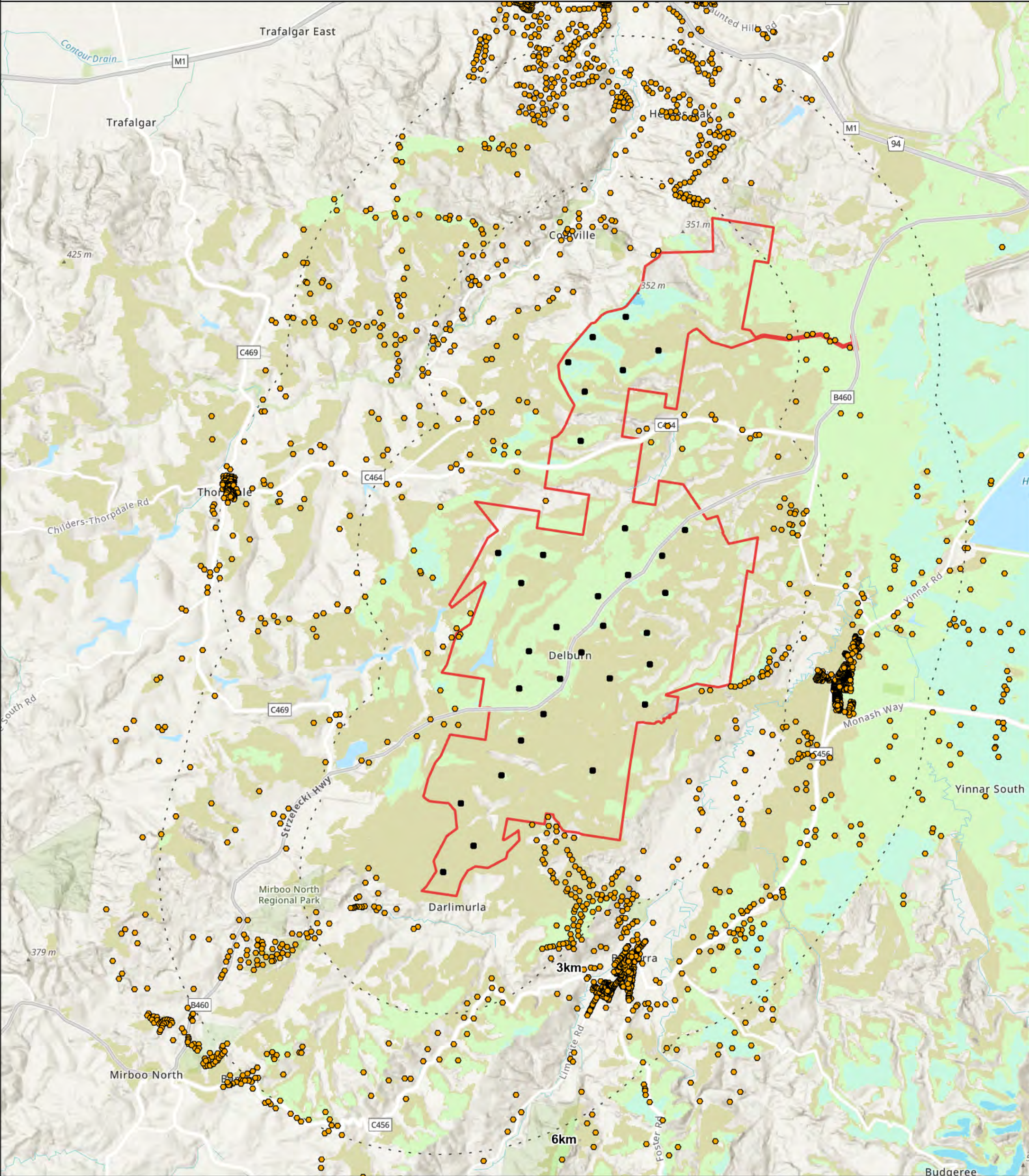
DATA SOURCES

© Commonwealth of Australia (Geoscience Australia)

Geodata Topo 250k Series 3; Vicmap Data © State of Victoria; Jacobs.

COPYRIGHT: The concepts and information contained in this document are the copyright of Jacobs. Use or copying of the document in whole or in part without the written permission of Jacobs constitutes an infringement of copyright. Jacobs does not warrant that this document is definitive nor free of error and does not accept liability for any loss caused or arising from reliance upon information provided herein.





- Dwellings
- Wind turbine location
- ZVI
- Site extent

**Turbine Visibility**

Number of visible turbines

- ≤ 0 (no colour)
- ≤ 8
- ≤ 16
- ≤ 24
- ≤ 33

**Jacobs**

0 50 100 km

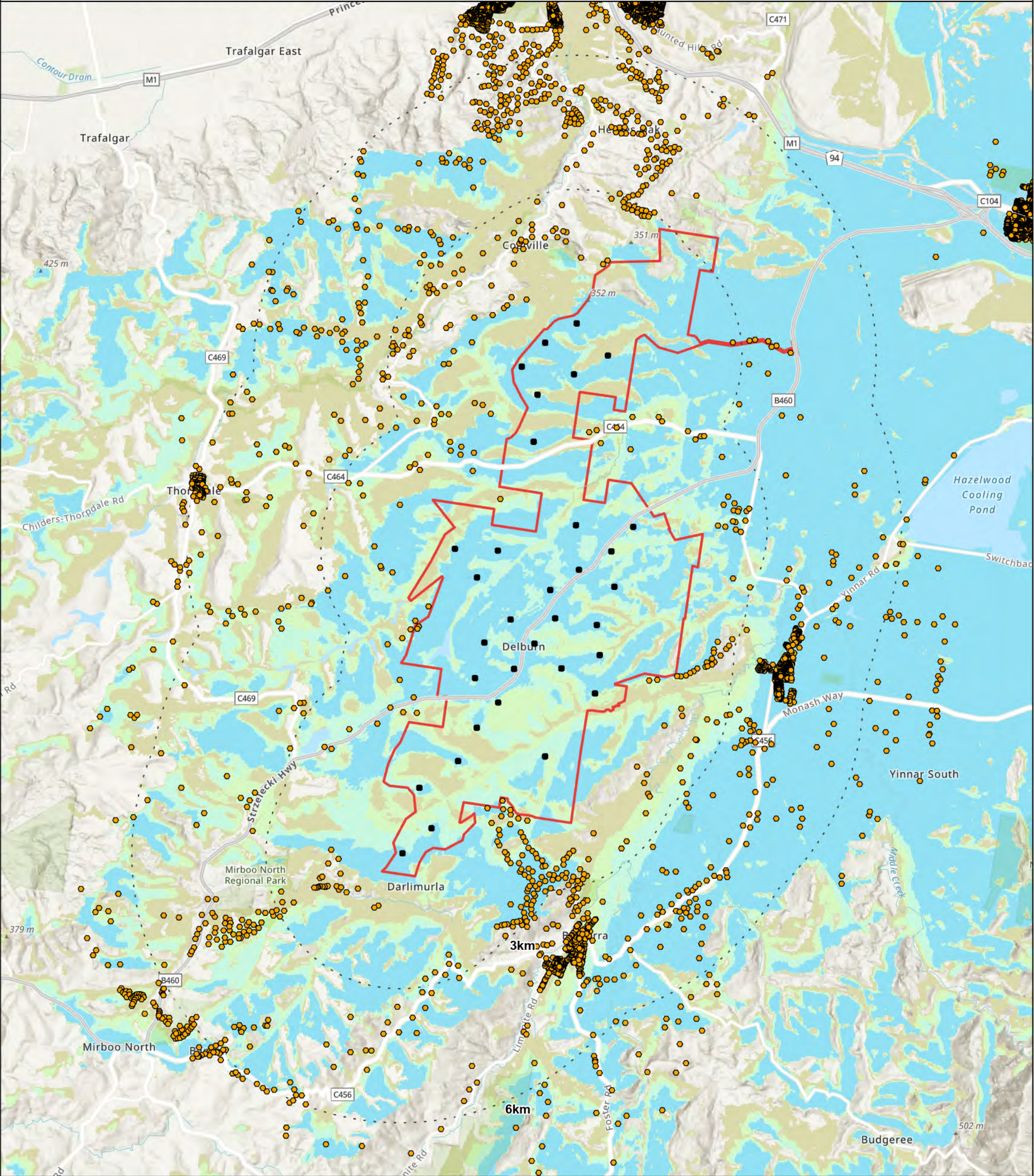
IS279700  
Turbine Layout Version 3.5  
GDA 1994 MGA Zone 55

0 1.5 3  
Kilometres

**DATA SOURCES**  
© Commonwealth of Australia (Geoscience Australia)  
Geodata Topo 250k Series 3; Vicmap Data © State of Victoria; Jacobs.

**COPYRIGHT:** The concepts and information contained in this document are the copyright of Jacobs. Use or copying of the document in whole or in part without the written permission of Jacobs constitutes an infringement of copyright. Jacobs does not warrant that this document is definitive nor free of error and does not accept liability for any loss caused or arising from reliance upon information provided herein.





- Dwellings
- Wind turbine location
- ZVI
- Site extent

**Turbine Visibility**

Number of visible turbines

- ≤ 0 (no colour)
- ≤ 8
- ≤ 16
- ≤ 24
- ≤ 33

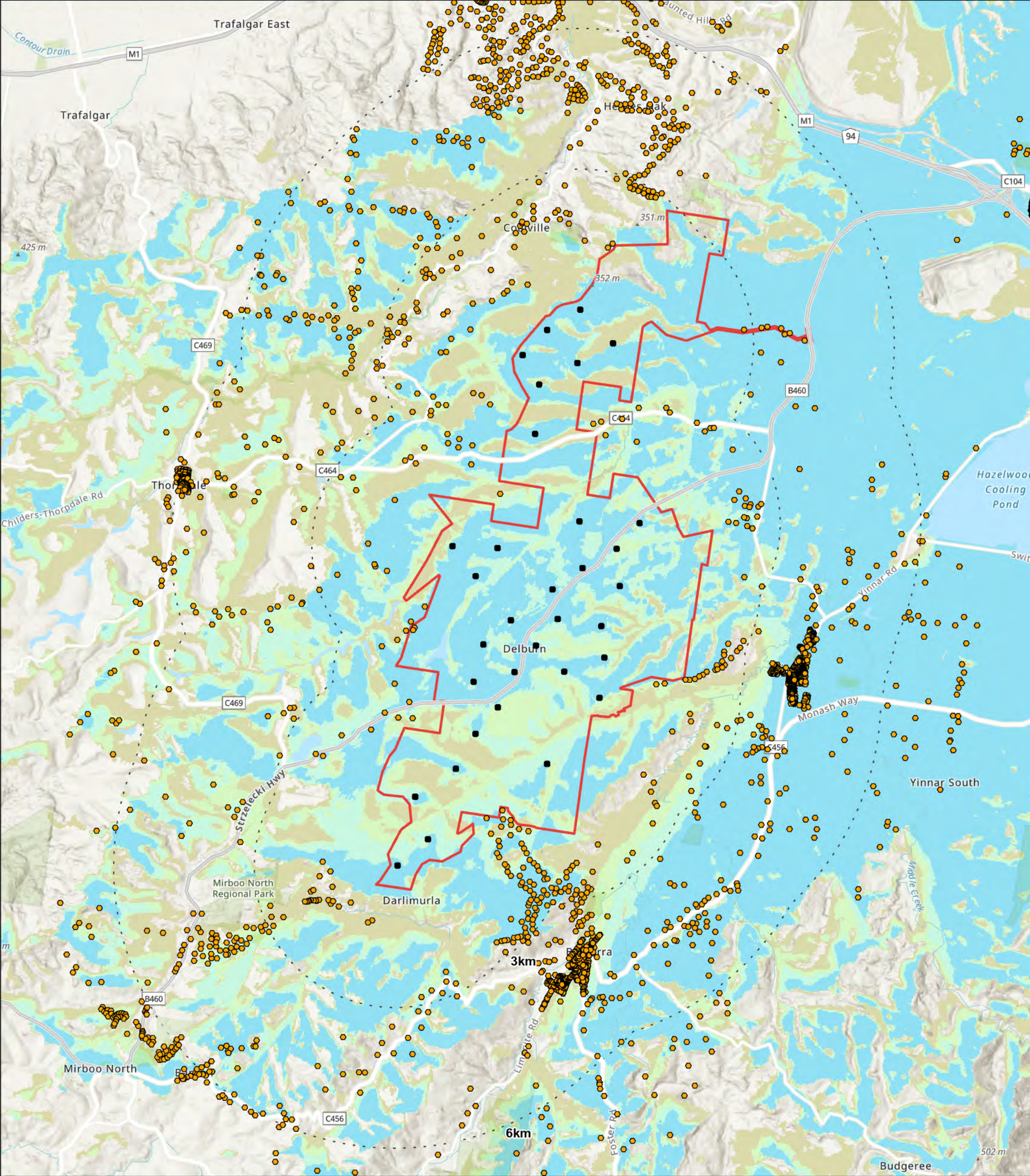
IS279700  
Turbine Layout Version 3.5  
GDA 1994 MGA Zone 55

0 1.5 3  
Kilometres

**DATA SOURCES**  
© Commonwealth of Australia (Geoscience Australia)  
Geodata Topo 250k Series 3; Vicmap Data © State of Victoria; Jacobs.

**COPYRIGHT:** The concepts and information contained in this document are the copyright of Jacobs. Use or copying of the document in whole or in part without the written permission of Jacobs constitutes an infringement of copyright. Jacobs does not warrant that this document is definitive nor free of error and does not accept liability for any loss caused or arising from reliance upon information provided herein.





- Dwellings
- Wind turbine location
- ZVI
- Site extent

**Turbine Visibility**

Number of visible turbines

- ≤ 0 (no colour)
- ≤ 8
- ≤ 16
- ≤ 24
- ≤ 33

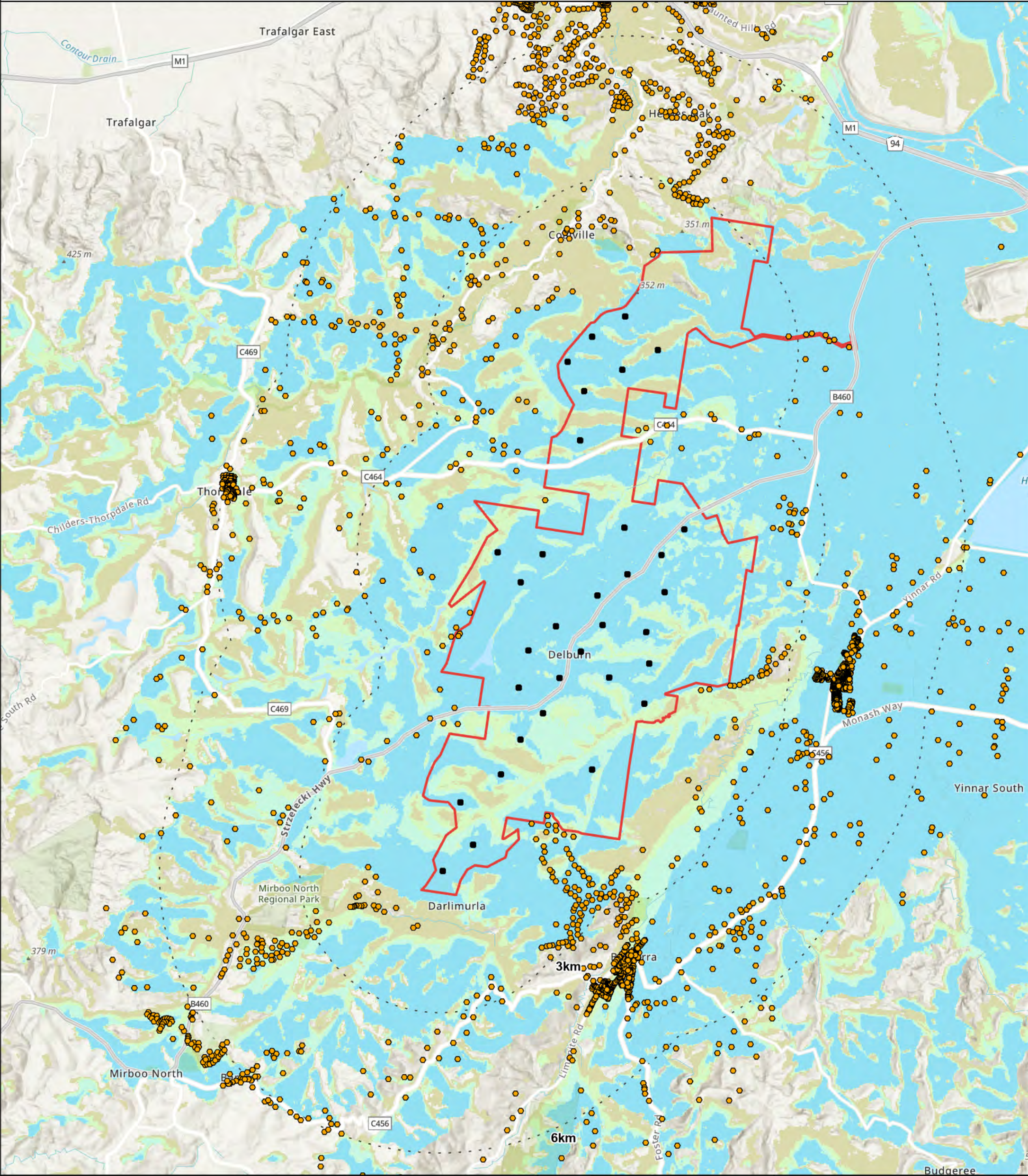
IS279700  
Turbine Layout Version 3.5  
GDA 1994 MGA Zone 55

0 1.5 3  
Kilometres

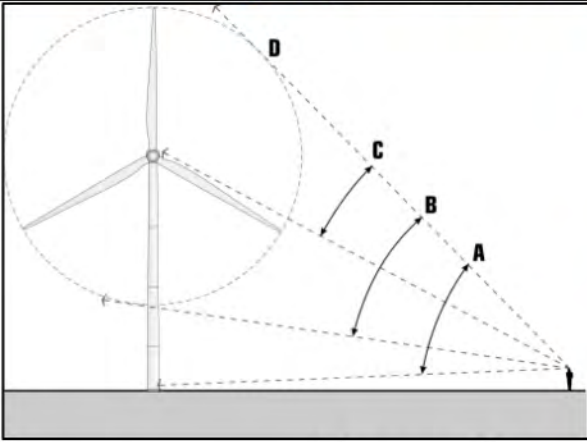
**DATA SOURCES**  
© Commonwealth of Australia (Geoscience Australia)  
Geodata Topo 250k Series 3; Vicmap Data © State of Victoria; Jacobs.

**COPYRIGHT:** The concepts and information contained in this document are the copyright of Jacobs. Use or copying of the document in whole or in part without the written permission of Jacobs constitutes an infringement of copyright. Jacobs does not warrant that this document is definitive nor free of error and does not accept liability for any loss caused or arising from reliance upon information provided herein.





- Dwellings
  - Wind turbine location
  - - - ZVI
  - ▭ Site extent
- Turbine Visibility**
- Number of visible turbines
- ≤ 0 (no colour)
  - ≤ 8
  - ≤ 16
  - ≤ 24
  - ≤ 33



Jacobs



IS279700

Turbine Layout Version 3.5

GDA 1994 MGA Zone 55

0 1.5 3

Kilometres

N

DATA SOURCES

© Commonwealth of Australia (Geoscience Australia)

Geodata Topo 250k Series 3; Vicmap Data © State of Victoria; Jacobs.

COPYRIGHT: The concepts and information contained in this document are the copyright of Jacobs. Use or copying of the document in whole or in part without the written permission of Jacobs constitutes an infringement of copyright. Jacobs does not warrant that this document is definitive nor free of error and does not accept liability for any loss caused or arising from reliance upon information provided herein.