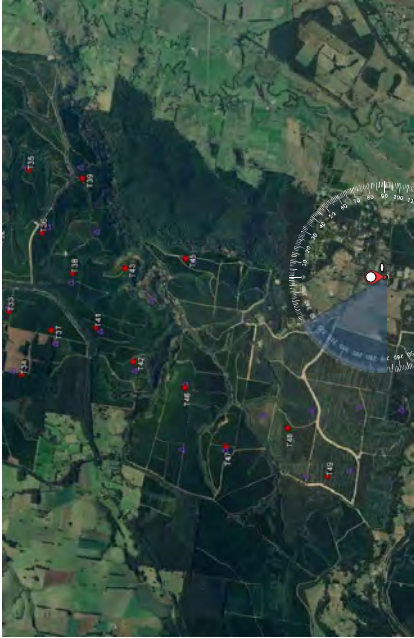




Existing view



Photomontage- Revised Layout (V2.1)



- Viewpoint location and orientation
- Turbine location - Concept Layout
  - Turbine location - Revised Layout
- Distance to Nearest Turbine Revised Layout - (T48) 2.6km





Existing view



Photomontage- Revised Layout (V2.1)



- Viewpoint location and orientation
- Turbine location - Concept Layout
- Turbine location - Revised Layout

Distance to Nearest Turbine Revised Layout - (T48) 2.6km

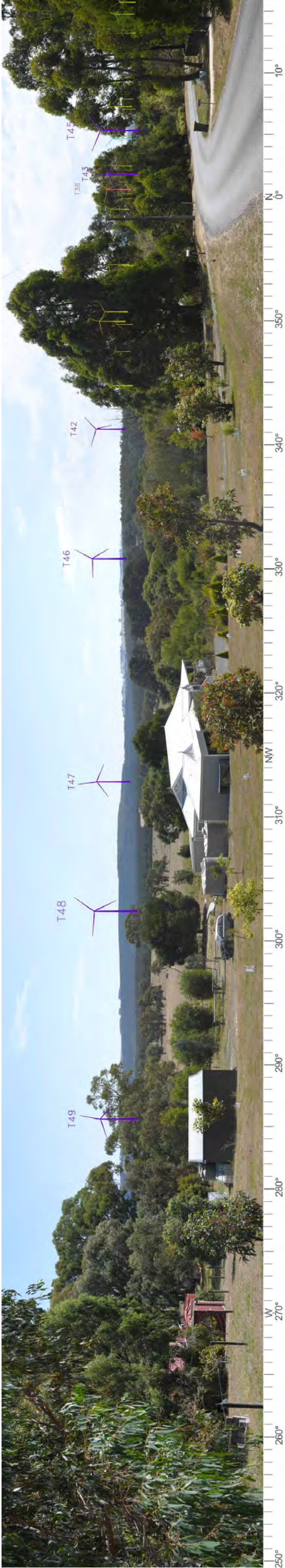


# VIEWPOINT L10: BUNDERRA DRIVE

(GPS 55 H, 435501m E, 5752853m S)



Existing view



Labeled Turbines - Revised Layout (V2.1)



- Viewpoint location and orientation
- Turbine location - Concept Layout
- Turbine location - Revised Layout
- Distance to Nearest Turbine Revised Layout - (T48) 2.6km



# VIEWPOINT L14: TODDS ROAD

(GPS 55 H, 434710m E, 5754128m S)



Existing view



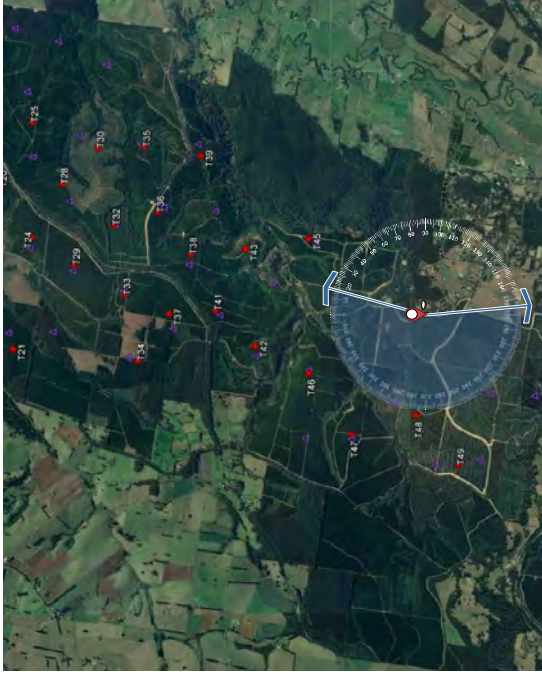
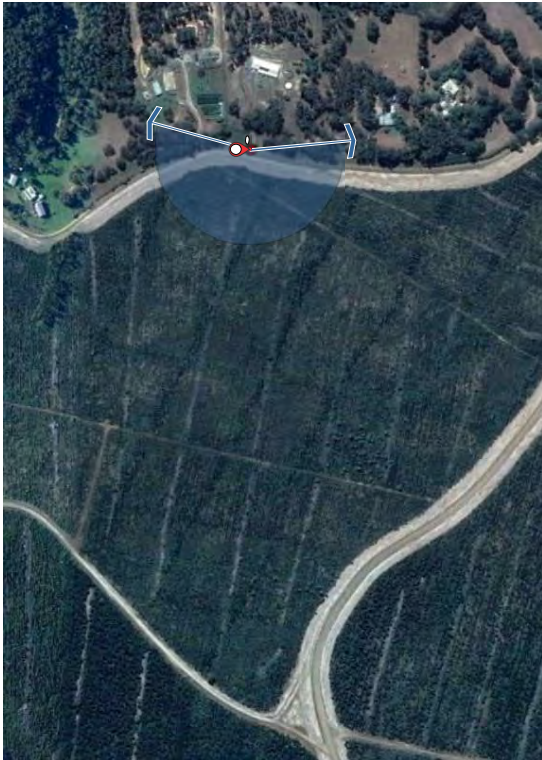
Photomontage - Revised Layout (V2.1)

See Sheet 2

See Sheet 3

- Viewpoint location and orientation
- Turbine location - Concept Layout
- Turbine location - Revised Layout

Distance to Nearest Turbine  
Revised Layout - (T48) 1.4km





# VIEWPOINT L14: TODDS ROAD



Existing view



Photomontage- Revised Layout (V2.1)



- Viewpoint location and orientation
- Turbine location - Concept Layout
- Turbine location - Revised Layout

Distance to Nearest Turbine  
Revised Layout - (T48) 1.4km



# VIEWPOINT L14: TODDS ROAD

(GPS 55 H, 434710m E, 5754128m S)



Existing view



Photomontage- Revised Layout (V2.1)



- Viewpoint location and orientation
  - Turbine location - Concept Layout
  - Turbine location - Revised Layout
- Distance to Nearest Turbine Revised Layout - (T48) 1.4km**

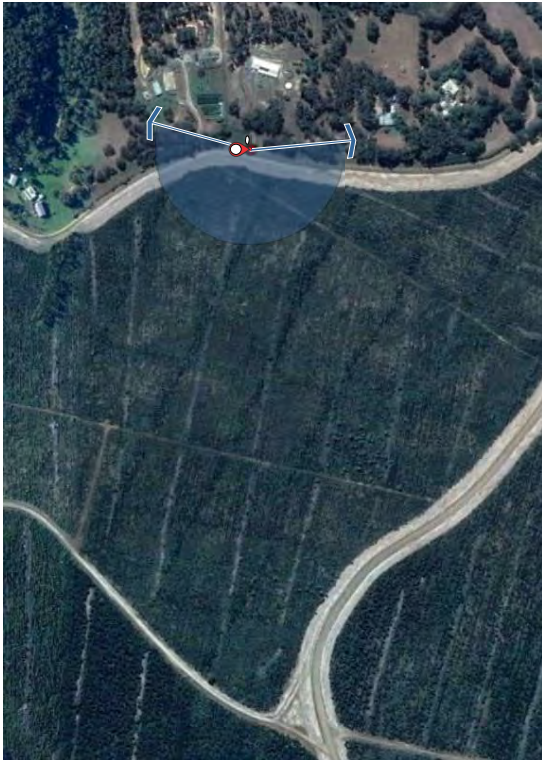




Existing view



Labeled Turbines - Revised Layout (V2.1)



- Viewpoint location and orientation
- Turbine location - Concept Layout
- Turbine location - Revised Layout

Distance to Nearest Turbine  
Revised Layout - (T48) 1.4km



# VIEWPOINT L15: DARLIMURLA ROAD

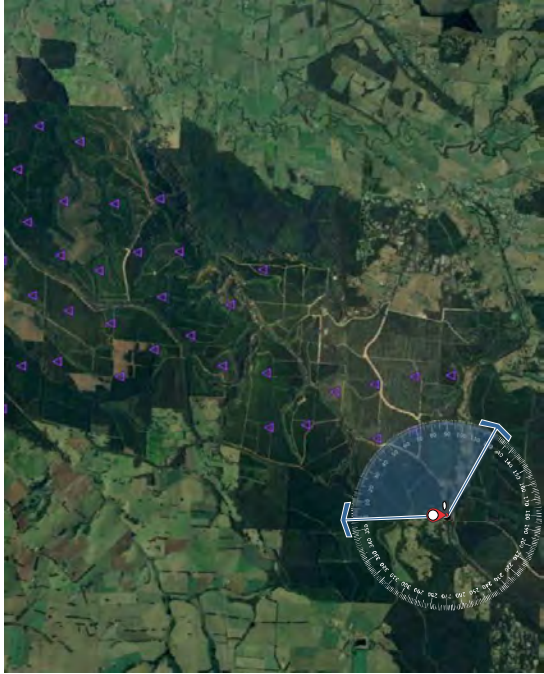
(GPS 55 H, 431126m E, 5752903m S)



Existing view



Wireframe - Labelled view (Concept Layout - V1.5)



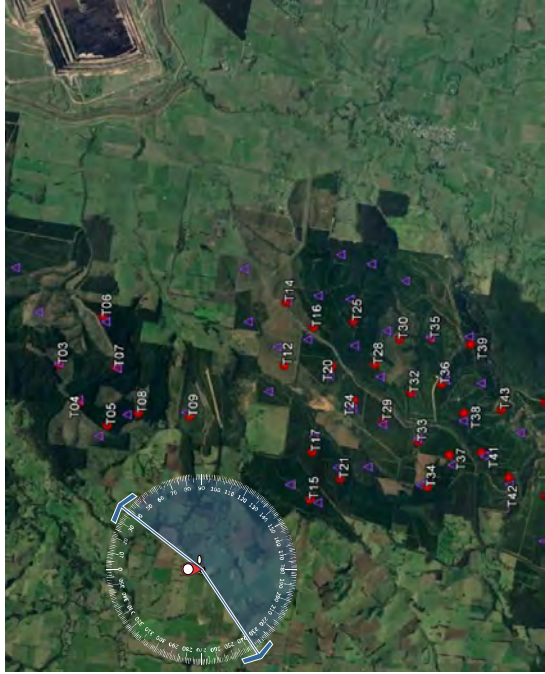
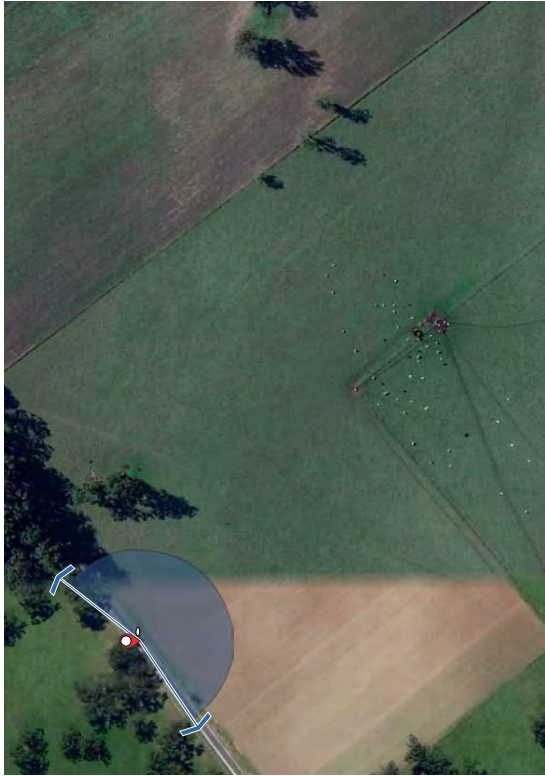




Existing view



Photomontage - Revised Layout (V2.1)



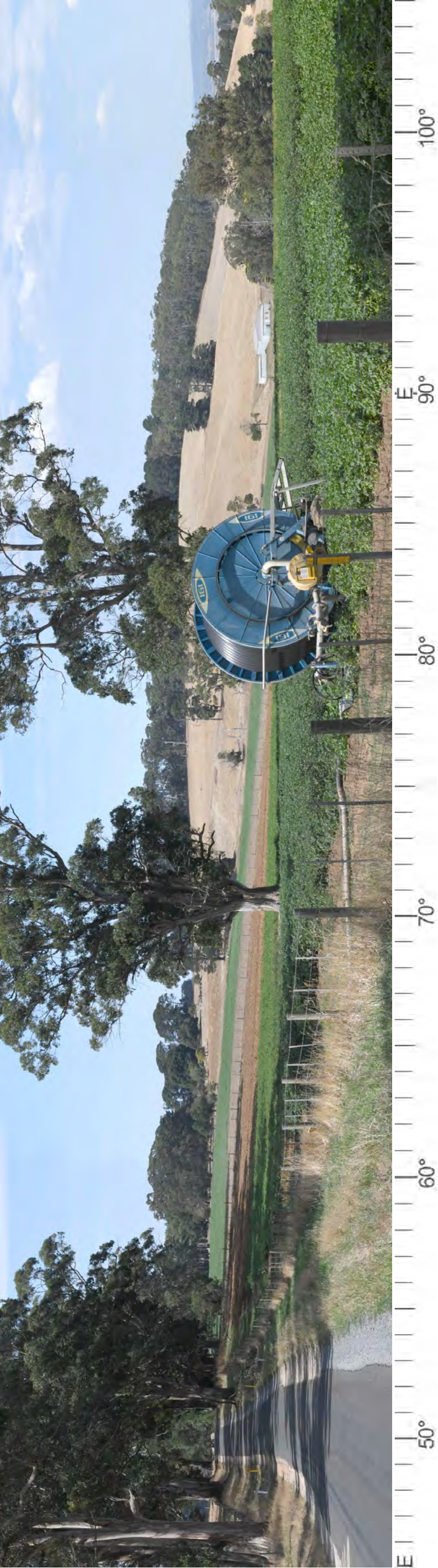
- Viewpoint location and orientation
- Turbine location - Concept Layout
- Turbine location - Revised Layout

Distance to Nearest Turbine  
Revised Layout - (T15) 2.6km



# VIEWPOINT L21: MCDONALDS TRACK

(GPS 55 H, 432370m E, 5762710m S)



Existing view



Photomontage- Revised Layout (V2.1)



- Viewpoint location and orientation
  - Turbine location - Concept Layout
  - Turbine location - Revised Layout
- Distance to Nearest Turbine Revised Layout - (T15) 2.6km**



# VIEWPOINT L21: MCDONALDS TRACK

(GPS 55 H, 432370m E, 5762710m S)



Existing view



Photomontage- Revised Layout (V2.1)



- Viewpoint location and orientation
  - Turbine location - Concept Layout
  - Turbine location - Revised Layout
- Distance to Nearest Turbine Revised Layout - (T15) 2.6km**



# VIEWPOINT L21: MCDONALDS TRACK

(GPS 55 H, 432370m E, 5762710m S)



Existing view



Photomontage- Revised Layout (V2.1)



- Viewpoint location and orientation
  - Turbine location - Concept Layout
  - Turbine location - Revised Layout
- Distance to Nearest Turbine Revised Layout - (T15) 2.6km**





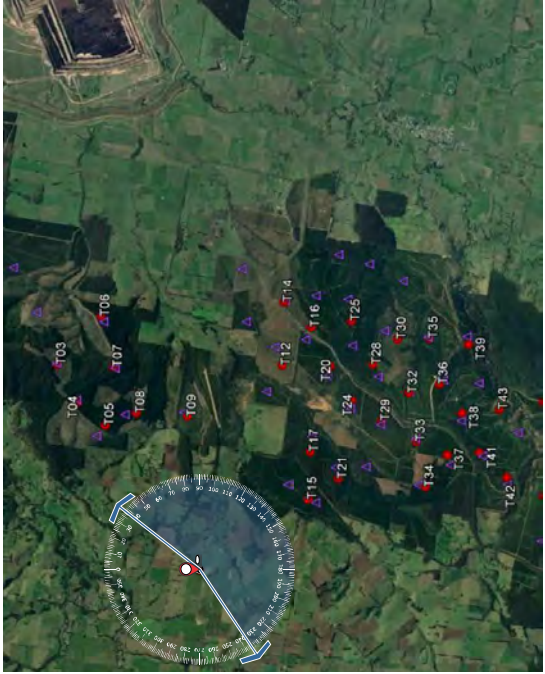
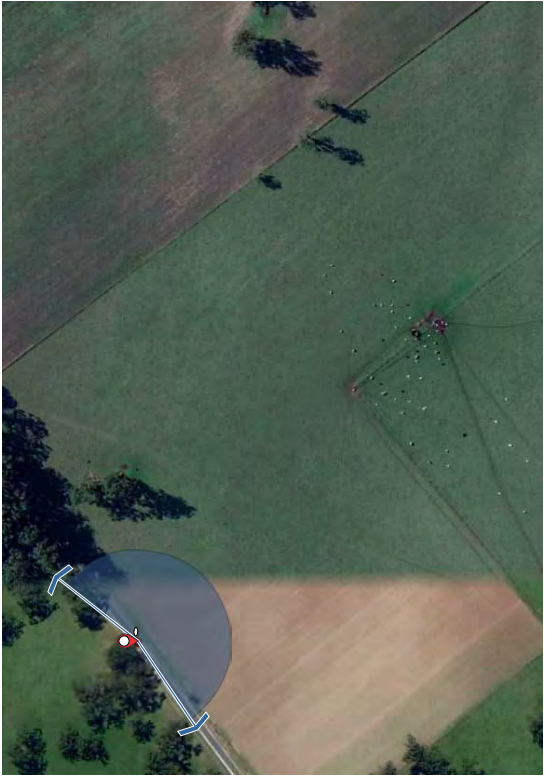
Existing view



Labeled Turbines - Revised Layout (V2.1)

- Viewpoint location and orientation
- Turbine location - Concept Layout
- Turbine location - Revised Layout

Distance to Nearest Turbine  
Revised Layout - (T15) 2.6km



Viewpoint Map





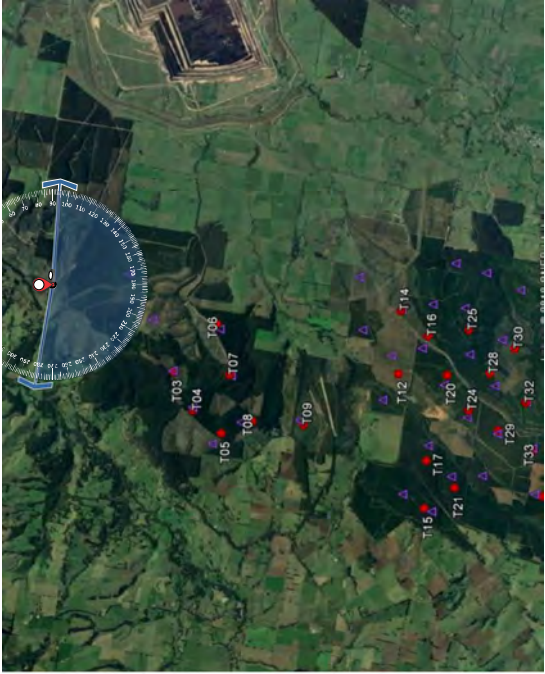
Existing view



Photomontage - Revised Layout (V2.1)

- Viewpoint location and orientation
- Turbine location - Concept Layout
- Turbine location - Revised Layout

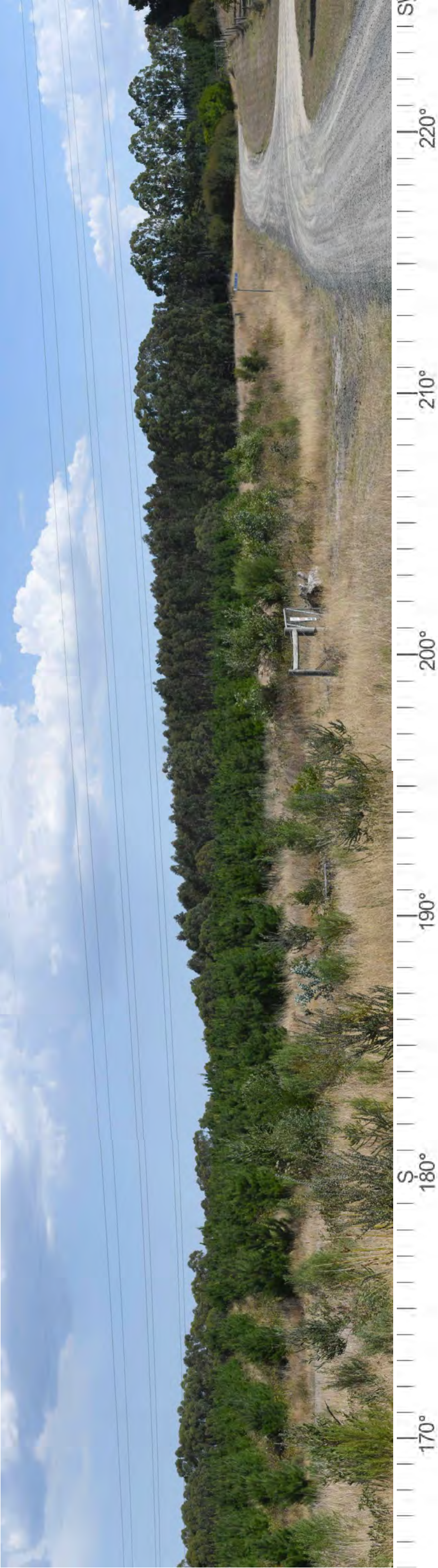
Distance to Nearest Turbine  
Revised Layout - (T03) 3.0km





# VIEWPOINT L22: SAYERS TRACK

(GPS 55 H, 438274m E, 5768007m S)



Existing view



Photomontage- Revised Layout (V2.1)

Viewpoint location and orientation  
Turbine location - Concept Layout  
Turbine location - Revised Layout

Distance to Nearest Turbine  
Revised Layout - (T03) 3.0km



Viewpoint Map





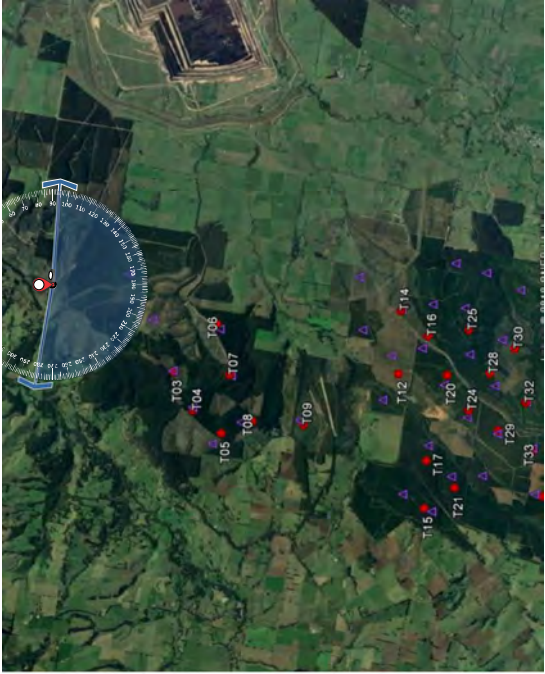
Existing view



Labeled Turbines - Revised Layout (V2.1)

- Viewpoint location and orientation
- Turbine location - Concept Layout
- Turbine location - Revised Layout

Distance to Nearest Turbine  
Revised Layout - (T03) 3.0km



Viewpoint Map





Existing view



Photomontage - Revised Layout (V2.1)

See Sheet 2

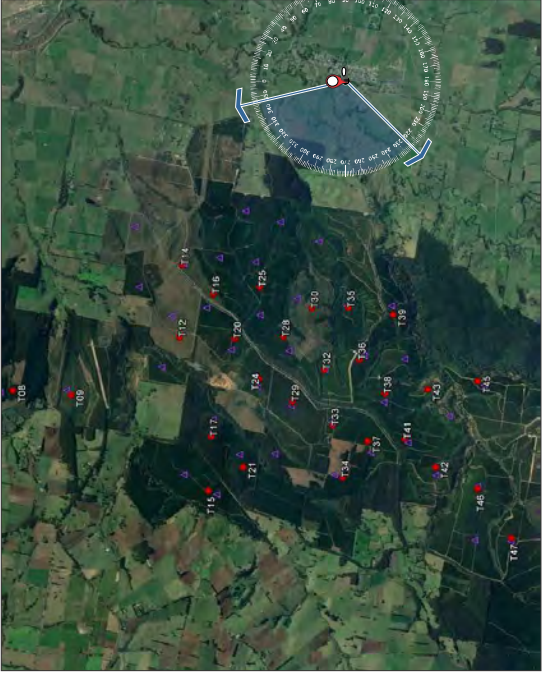


See Sheet 3



- Viewpoint location and orientation
- Turbine location - Concept Layout
- Turbine location - Revised Layout

Distance to Nearest Turbine  
Revised Layout - (T25) 3.9km



Viewpoint Map

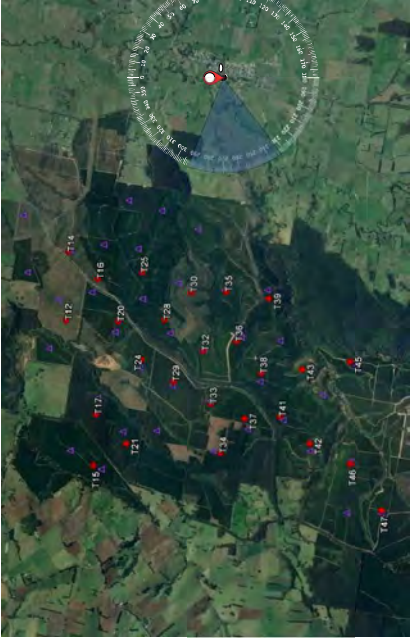




Existing view



Photomontage- Revised Layout (V2.1)



Viewpoint location and orientation  
Turbine location - Concept Layout  
Turbine location - Revised Layout  
Distance to Nearest Turbine  
Revised Layout - (T25) 3.9km



# VIEWPOINT T6: YINNAR TOWNSHIP



Existing view



Photomontage- Revised Layout (V2.1)



- Viewpoint location and orientation
  - Turbine location - Concept Layout
  - Turbine location - Revised Layout
- Distance to Nearest Turbine Revised Layout - (T25) 3.9km**





Existing view

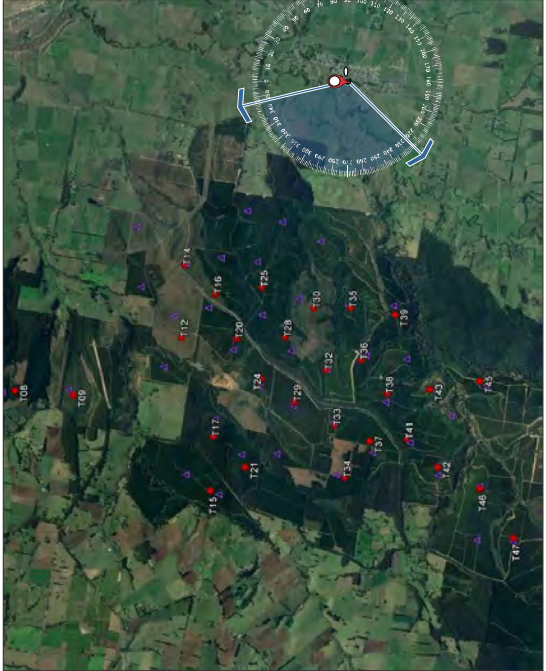


Labeled Turbines - Revised Layout (V2.1)



- Viewpoint location and orientation
- Turbine location - Concept Layout
- Turbine location - Revised Layout

Distance to Nearest Turbine Revised Layout - (T25) 3.9km





# VIEWPOINT T9: THORPDALE TOWNSHIP

(GPS 55 H, 428175m E, 5762013m S)

